

Lampiran 3

Perhitungan Dengan Uji Chi-square Metode Rumus Chi-square :

Kriteria : Ho ditolak jika λ^2 hitung $>$ λ^2 tabel

Rumus λ^2 hitung :

$$\lambda^2 = \frac{(O_{b.k} - E_{b.k})^2}{E_{b.k}}$$

$$E1.1 = \frac{14 \times 27}{30} = 12,6$$

$$E1.2 = \frac{14 \times 3}{30} = 1,4$$

$$E2.1 = \frac{13 \times 27}{30} = 11,7$$

$$E2.2 = \frac{13 \times 3}{30} = 1,3$$

$$E3.1 = \frac{3 \times 27}{30} = 2,7$$

$$E3.2 = \frac{3 \times 3}{30} = 0,3$$

$$\lambda^2 = \sum \left(\frac{(O1.1 - E1.1)^2}{E1.1} + \frac{(O1.2 - E1.2)^2}{E1.2} + \frac{(O2.1 - E2.1)^2}{E2.1} + \frac{(O2.2 - E2.2)^2}{E2.2} \right. \\ \left. + \frac{(O3.1 - E3.1)^2}{E3.1} + \frac{(O3.2 - E3.2)^2}{E3.2} \right)$$

$$\lambda^2 = \sum \left(\frac{(13 - 12,6)^2}{12,6} + \frac{(1 - 1,4)^2}{1,4} + \frac{(11 - 11,7)^2}{11,7} + \frac{(2 - 1,3)^2}{1,3} + \frac{(3 - 2,7)^2}{2,7} \right. \\ \left. + \frac{(0 - 0,3)^2}{0,3} \right)$$

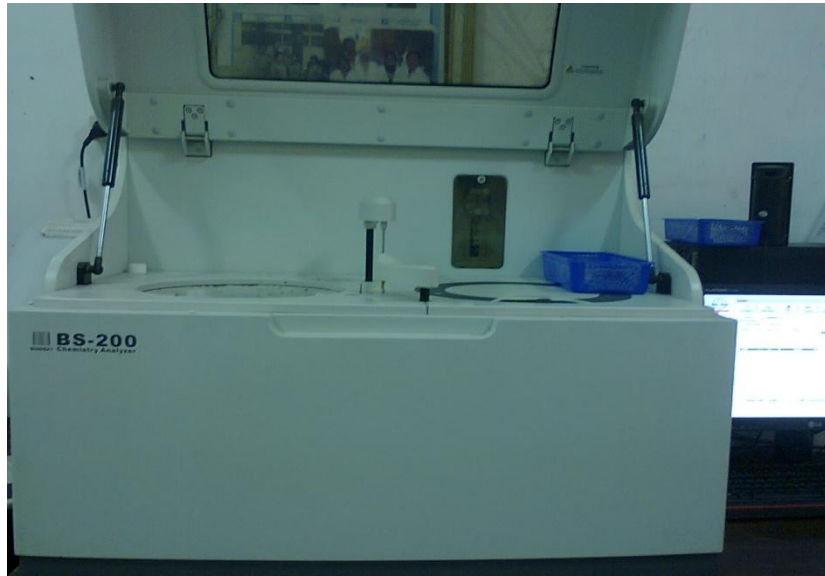
$$\lambda^2 = \sum (0,01 + 0,11 + 0,04 + 0,37 + 0,03) \\ = 0,56$$

Menentukan λ^2 tabel

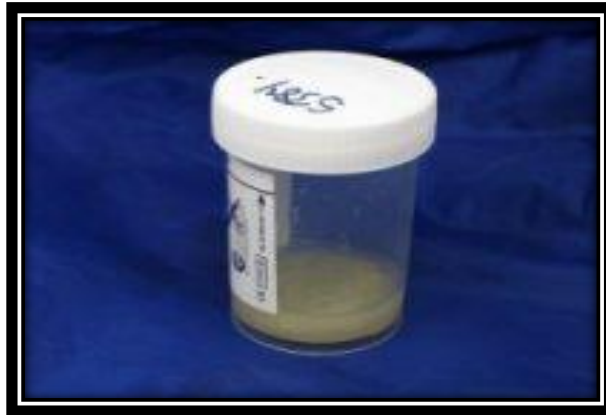
$$\lambda^2 \text{ tabel} = X^2 \alpha, \text{ db} \\ = 0,05, (b-1) (k-1) \\ = 0,05, (3-1) (2-1) \\ = 0,05, 2 \times 1 \\ = 0,05, 2 \\ = 5,991$$

Dari hasil perhitungan telah didapatkan hasil λ^2 hitung < λ^2 tabel. Jadi H_0 diterima, berarti tidak ada hubungan antara grad hasil pembacaan jumlah BTA dengan kadar SGPT pada penderita TBC paru.

Lampiran 4



Gambar Alat MINDRAY BS 200



Gambar Pot Dahak