

# Hasil Cek Plagiasi Jurnal Dampak Lapisan Konstruksi Atap terhadap Suhu Ruang

*by* Nurul Fitria Marina

---

**Submission date:** 01-Mar-2021 08:25PM (UTC-0800)

**Submission ID:** 1521978548

**File name:** 1.\_JURNAL\_1\_THE\_EFFECT\_OF.pdf (595.36K)

**Word count:** 3091

**Character count:** 15672

# Bali Medical Journal



INDONESIAN PHYSICIAN FORUM &  
INDONESIA COLLEGE OF SURGEONS,  
INDONESIA



Open Access & Peer-Reviewed Multidisciplinary  
Journal Of Medical Sciences

  
Advanced Search

Articles | Browse | For Authors | About Us | Contact

Facebook | Twitter | LinkedIn | Login | Register

Home - Editorial Board & Reviewer

**Editor-in-Chief**

**Prof. Dr. Sri Malawan, SpGS**  
(Scopus ID) (Google Scholar)  
srimalawan@unud.ac.id / malawan@yahoo.com  
Department of Neuro Surgery, Udayana University  
Sanglah General Hospital  
Bali - Indonesia

**Associate Editor**

**Prof. Putra Manuaba, M.PH**  
(Scopus ID) (Google Scholar)  
putramanuaba@unud.ac.id / putramanuaba@yahoo.com  
Biomedicine Postgraduate Program, Udayana University  
Bali - Indonesia

**Prof. Vitar Suciyoga, SpOG**

(Scopus ID)  
vitar@unud.ac.id  
Faculty of Medicine, Udayana University, Sanglah Hospital Denpasar, Bali-Indonesia

**Editorial Board for Regional America**

**Ankit Saxhja, M.D.B.S., F.A.C.P., F.A.S.N.**  
(Scopus ID)  
asaxhja@med.umich.edu  
Nephrology and Hypertension Cleveland Clinic (United States)

**Editorial Board for Regional Australia**

**Prof. John Selge, MB, BS, DRCG, FRCG, RANZCOG**  
(Scopus ID)  
john@selge.com.au  
Ainford Hospital & Faculty of Health Sciences, University of Adelaide, Australia

**Dr Dewy Apuningsyan Tardis MPH-MBA**

(Orcid ID)  
dewyand@yahoo.com  
James Cook University Australia Master of Public Health Master Of Business Administration, Indonesia

**Editorial Board for Regional Europe**

**Prof. Harald Hoekstra**  
(Scopus ID)  
h.j.vogel@primus.com.au  
Universair Medisch Centrum Groningen, Division of Surgical Oncology, Groningen the Netherlands

**Editorial Board for Regional Asia**

**Prof Huang Qin**  
(Scopus ID)  
qhuan@cpa.edu.cn  
Chairman Dept. of Neurosurgery, Guangdong W9 Hospital Guangzhou China

**Assoc. Prof. Mohammad Amin Sahrami**

(Scopus ID)  
amin@sahrami123@gmail.com  
Head of healthcare management department, Shahid Sadoughi University of Medical Sciences, Yazd/Iran

**Dr. Tanweer Dq, PhD**

(Scopus ID)  
tdm1983@jau.edu.sa  
Assistant Professor, Department of Biology, Faculty of Science, Jau University, Jau, Saudi Arabia

**Editorial Board Members**

**Prof. And Asadil Islam**  
(Scopus ID) (Google Scholar)



WEB OF SCIENCE™



DOAJ DIRECTORY OF OPEN ACCESS JOURNALS



Full Indexing List

In Press

Submit An Article

Scopus Checkers



Home Articles - 1415, No 3 (2017)

Integrated Biomedical Laboratory Conference Special Issue

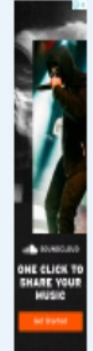
### Vol 6, No 3 (2017): Integrated Biomedical Laboratory Conference Special Issue

Table of Contents

<p><b>ORIGINAL ARTICLE</b></p> <p><b>Ultrasound evaluation of nephritis, hepatic steatosis, and lower joint effusion in Silesian women with systemic lupus erythematosus</b></p> <p>Elyandri Devi Marlina, I Gusti Raka Widiarta, Dinesha Ayu Ratna Devi</p> <p>Deliver Print: August 30, 2017   DOI: 10.19963/bmj.v6i3.712</p> <p><a href="#">View Article</a>   <a href="#">Download PDF</a></p>	<p><b>ORIGINAL ARTICLE</b></p> <p><b>Pharmacological and Hippocampal CA1 region neurophysiological study of Sertraline effects on Single-prolonged Stress-induced Rodent model of PTSD</b></p> <p>Agung Wase Mahendra, Ningsun Tji Purnawati, Ni Luh Sari Darmayanti, Ni Wayan Kusuma Dewi</p> <p>Deliver Print: August 30, 2017   DOI: 10.19963/bmj.v6i3.708</p> <p><a href="#">View Article</a>   <a href="#">Download PDF</a></p>
<p><b>ORIGINAL ARTICLE</b></p> <p><b>Placental regeneration induced from mouse Embryo-derived calyx of Salween red size (Dryas katka Cv. Sarik Cerana)</b></p> <p>Ma Rugini Made Ardiyana, Diding Wening Pujar Satriana, Popy Nur Lita Handji, Maura Permatika, Febri Raghita Wang, Komang Nugrahadewi</p> <p>Deliver Print: August 30, 2017   DOI: 10.19963/bmj.v6i3.710</p> <p><a href="#">View Article</a>   <a href="#">Download PDF</a></p>	<p><b>ORIGINAL ARTICLE</b></p> <p><b>The effect of cacao bean extracts administration on SCD and on-LDL concentration in oxidative stress conditioned rat</b></p> <p>Ma Ayu Dewi Wijayanti, I Gusti Ayu Dewi Karyawati, WIS Subandono</p> <p>Deliver Print: August 30, 2017   DOI: 10.19963/bmj.v6i3.715</p> <p><a href="#">View Article</a>   <a href="#">Download PDF</a></p>
<p><b>ORIGINAL ARTICLE</b></p> <p><b>The difference in motor improvements related to combination of omega-3 polyunsaturated fatty acid and alpha-tocopherol supplementations due of weight-dropped induced spinal cord injury in rats</b></p> <p>Typhania DZ Mahendra, Wihana Ayu Widiarta, Wihana Widiarta</p> <p>Deliver Print: August 30, 2017   DOI: 10.19963/bmj.v6i3.711</p> <p><a href="#">View Article</a>   <a href="#">Download PDF</a></p>	<p><b>ORIGINAL ARTICLE</b></p> <p><b>Purple sweet potato ethanolic extract reduce aortic VCAM expression in rabbit with high-cholesterol diet</b></p> <p>Riqun Kurniawan, Kurniawan</p> <p>Deliver Print: August 30, 2017   DOI: 10.19963/bmj.v6i3.713</p> <p><a href="#">View Article</a>   <a href="#">Download PDF</a></p>
<p><b>ORIGINAL ARTICLE</b></p> <p><b>The risk of cervical adenocarcinoma in patients infected with human papillomavirus type-16 is three times higher than other high-risk types</b></p> <p>I L A S, Mahendra Dewi</p> <p>Deliver Print: August 30, 2017   DOI: 10.19963/bmj.v6i3.714</p> <p><a href="#">View Article</a>   <a href="#">Download PDF</a></p>	<p><b>ORIGINAL ARTICLE</b></p> <p><b>Medical waste management strategy in the Indonesian primary health care center with system approach: a SWOT Analysis</b></p> <p>I Gusti Nugrah-Devi Prita, Suny Prita-Katir Suciati, Susil Ayu Ari Agung</p> <p>Deliver Print: August 30, 2017   DOI: 10.19963/bmj.v6i3.716</p> <p><a href="#">View Article</a>   <a href="#">Download PDF</a></p>
<p><b>ORIGINAL ARTICLE</b></p> <p><b>K-RAS mutation profile in colorectal carcinoma patients in Sanglah Hospital Denpasar, Bali-Indonesia</b></p> <p>Luh Prita In Indraguna, Ni Prita Sreedipati</p> <p>Deliver Print: August 30, 2017   DOI: 10.19963/bmj.v6i3.717</p> <p><a href="#">View Article</a>   <a href="#">Download PDF</a></p>	<p><b>ORIGINAL ARTICLE</b></p> <p><b>Lead detection in blood of the Gall cattle that were slaughtered in the traditional slaughterhouses in Denpasar, Bali</b></p> <p>I Gusti Dewika, Widiarta Komara, Ni Ningsun Widiarta, Ni Wayan Kusuma</p> <p>Deliver Print: August 30, 2017   DOI: 10.19963/bmj.v6i3.718</p> <p><a href="#">View Article</a>   <a href="#">Download PDF</a></p>
<p><b>ORIGINAL ARTICLE</b></p> <p><b>Combination of high dose of metformin and low dose of doclaxin increases apoptosis in cervical cancer cell line</b></p> <p>Siti Dwi Nur Hafidha, Muhandasul Muhandasul, Dina Indarti</p> <p>Deliver Print: August 30, 2017   DOI: 10.19963/bmj.v6i3.719</p> <p><a href="#">View Article</a>   <a href="#">Download PDF</a></p>	<p><b>ORIGINAL ARTICLE</b></p> <p><b>The effect of pectin sweet orange (Citrus sinensis L.) obacta peel powder on the lipid profile of male dyslipidemia rats (Rattus norvegicus)</b></p> <p>Baca Kurniasari Samudra, Rahmatul Karim, Rofiqul Wahyuni</p> <p>Deliver Print: August 30, 2017   DOI: 10.19963/bmj.v6i3.720</p> <p><a href="#">View Article</a>   <a href="#">Download PDF</a></p>



- Full Text List
- Home
- Submit An Article
- Sign Up Checklist



DiscoverSys  
WISDOM OF SCIENCE

Published by DiscoverSys

6

## The effect of pacitan's sweet orange's (*Citrus sinensis* (L.) osbeck) peel powder on the lipid profile of male dyslipidemia rats (*Rattus norvegicus*)



CrossMark

Rinza Rahmawati Samsudin,<sup>1</sup> Baterun Kunsah,<sup>1</sup> Rahma Widyastuti<sup>1</sup>

### ABSTRACT

**Introduction:** Dyslipidemia is a lipid metabolism disorder characterized by the increasing TC, LDL cholesterol, triacylglycerol TG above normal values and a decrease of HDL in the blood. Increasing LDL-C and triacylglycerol have a correlation with poor cardiovascular circumstances, and increased lipid absorption may lead to conditions of dyslipidemia. Orange peel is often considered a waste that is not useful. The purpose of this study wanted to know the effect of giving orange peel to the mice dyslipidemia.

**Methods:** This study was an experimental study, using a randomized post test only control group design using twenty-seven white rats (*Rattus norvegicus*) Wistar strains. This study lasted for eight weeks. Mice dyslipidemia is made by giving high-fat feed to all groups of K1, K2, and K3. Each group consists of 9 white rats divided randomly.

The composition of high-fat feed is a modification of the formula Nutrient requirements of laboratory animals.

**Results:** The mean of body weight of K1, K2 and K3 groups tended to increase. Increased body weight of mice began to occur at week 2, after the K1, K2, and K3 groups were given a high-fat diet. Levels of TC, LDL-C, and TG in K2 and K3 group treated with sweet peel leaf extract of Pacitan with a dosage of CMC-Na 1% dose 500 mg/kg BW and CMC-Na 1% dose 750 mg/kg BW Lower than the K1 group. Decreased levels of TC, LDL-C, and TG occurring in groups of K2 and K3 significantly.

**Conclusion:** Administration of Pacitanese sweet orange peel extract with dose of CMC-Na 1% dose 500 mg/kg BW and CMC-Na 1% dose 750 mg/kg BW for six weeks on white male Wistar rats can significantly decrease total cholesterol, LDL-C, and TG but did not affect HDL-C levels

**Keyword:** Dyslipidemia, TC, LDL-C, TG, HDL-C, d-limonene, Pacitanese orange

**Cite This Article:** Samsudin, R.R., Kunsah, B., Widyastuti, R. 2017. The effect of pacitan's sweet orange's (*Citrus sinensis* (L.) osbeck) peel powder on the lipid profile of male dyslipidemia rats (*Rattus norvegicus*). *Bali Medical Journal* 3(3): S51-S54. DOI:10.15562/bmj.v3i3.720

Faculty of Health Science,  
University of Muhammadiyah  
Surabaya

### INTRODUCTION

Dyslipidemia is a lipid metabolism disorder characterized by the increasing total cholesterol, Low-Density Lipoprotein (LDL) cholesterol, triacylglycerol (TG) above normal values and a decrease in cholesterol levels of high-density lipoprotein (HDL) in the blood. LDL is a lipoprotein that serves to transport cholesterol from the liver to the peripheral tissues. Meanwhile, HDL is a lipoprotein that functions to bring cholesterol from the peripheral tissue back to the liver. Thus, HDL works in preventing the buildup of cholesterol in the body. Increasing LDL-C and triacylglycerol have a correlation with poor cardiovascular circumstances.<sup>1</sup>

Lipids derived from food will undergo digestion process in the intestine into free fatty acids, triacylglycerol, phospholipids, and cholesterol. In the free fatty acid intestine, triacylglycerol, phospholipids, and cholesterol are processed and absorbed into the bloodstream in the form of chylomicrons. High levels of lipids in the diet will cause cholesterol absorption increasing during digestion in the intestine. Increased lipid absorption may lead to conditions of dyslipidemia.<sup>2</sup>

Indonesia is a country that has a diversity of plants. One of the typical Indonesian fruit is the Pacitanese sweet orange (*Citrus sinensis* (L.) Osbeck). Pacitanese orange is a type of sweet orange that goes into taxonomy *Citrus sinensis*. In addition to having a sweet taste of chemical compounds in Pacitanese orange potentially as an alternative treatment of dyslipidemia. In general, the composition of orange contains multi vitamins, especially vitamin C, water soluble fiber (pectin), flavonoids include hesperidin and d-limonene.<sup>3,4,5</sup>

D-limonene is a chemical compound that has a relatively low toxicity. In a study has been done proposed that d-limonene compounds do not cause mutagenic, carcinogenic, or nephrotoxic that are at risk to humans. In the *Citrus sinensis* group is d-limonene. The d-limonene compound of Pacitanese orange may affect PPAR. PPAR (Peroxisome proliferator-activated receptors) is a transcription factor of super family nuclear receptors. PPAR circulating with its ligand may affect lipid metabolism.<sup>5</sup> The mechanism of PPAR in affecting total cholesterol is by inhibiting NPC1L1 activity in the intestinal

\*Corresponding Author: Rinza Rahmawati Samsudin; Faculty of Health Science, University of Muhammadiyah Surabaya, rinza\_rahmawati@yahoo.com

Received: 2017-07-01  
Accepted: 2017-07-15  
Published: 2017-07-17

5

Open access: [www.balimedicaljournal.org](http://www.balimedicaljournal.org) and [ojs.unud.ac.id/index.php/bmj](http://ojs.unud.ac.id/index.php/bmj)

51

wall. NP1C1 is a transporter in charge of bringing cholesterol into the blood.<sup>6</sup>

A study presented at the American Heart Association (AHA) in Las Vegas states that a flavonoid in oranges known as hesperidin proven to effectively improve blood vessel function and help reduce the risk of heart disease. Hesperidin is a specific flavonoid found in sweet oranges and lemons that the hesperidin content can reach > 14% net weight.<sup>4</sup>

Hesperidin is most commonly found in young and green oranges, the concentration increases during storage. The distribution of hesperidin in the citrus fruits is spread over each layer and in large quantities can be isolated from the skin. In the ripe oranges, high concentrations of hesperidin can be found in the inner layers of orange rind and segmented membranes, whereas in lower concentrations can be found in juice and seed vesicles.<sup>4</sup> There are three possible mechanisms of action of hesperidin: inhibition of HMG-CoA reductase and ACAT enzyme activity, expression stimulation and transcription of LDL receptor gene, and inhibition of apoprotein B secretion by hepatocyte cells.<sup>4,7,8</sup>

The high potency possessed by Pacitanese orange sweet peel, it will be beneficial for the community if experimental research is done, especially about the effect of giving a Pacitanese sweet orange to lipid profile.

## MATERIAL AND METHOD

### Experimental Animal

This research is a pure experimental study, using randomized post test only control group design using twenty-seven Strain Wistar white rats (*Rattus norvegicus*) obtained from an experimental animal unit of Biochemistry Department Laboratory of Medicine Faculty, Airlangga University Surabaya. Criteria of experimental animal used in this study are male, 2-3 months old, 110 – 130-gram weight with the healthy physical condition. The samples were then divided into three groups namely groups K1, K2 and K3. Each group consisted of 9 white rats divided randomly. During the research one rat occupied a cage so that it was required 27 Pacitanese orange. Every week the weight of mice was weighed, and then the data obtained were recorded. This study lasted for eight weeks. The acclimatization period was done at the 1<sup>st</sup> week with standard feeding and aquadest *ad libitum* followed by a high-fat diet started in the second week until the eighth week, then the mice were treated based on each group at 4<sup>th</sup> week to 8<sup>th</sup> week.

Group K1: high-fat diet *ad libitum* + CMC-Na 1% + aquadest *ad libitum*

Group K2: high fat diet *ad libitum* + CMC-Na 1% dose 500 mg / kg BW + aquadest *ad libitum*

Group K3: high fat diet *ad libitum* + CMC-Na 1% dose 750 mg / kg BW + aquadest *ad libitum*

One day before the blood is taking from the heart, the rats were fastened first.

3 – 5 ml of blood was intra-cordially drawn from each rat. The rats then sacrificed and buried properly

### Preparation of Orange Peel Powder

The Pacitan orange was washed with flowing water. Then, the orange peel was separated from the fruit and then cut into small pieces. The peel dried in the dryer at a temperature of forty degrees Celsius for eight hours. The dried orange peel was grounded until became smooth powder and used for the experiment. The dose was divided into two types: CMC-Na 1% dose 500 mg / kg BW and CMC-Na 1% dose 750 mg / kg BW.

### High-Fat Feed

In this study, the dyslipidemia rats were made by giving high-fat feed to all groups of K1, K2, and K3. The composition of high-fat feed was a modification of the formula *Nutrient requirements of laboratory animals* such as fish meal, soybean meal, rice bran, Karak (dry rice), green beans, corn, rice flour, wheat flour, Gaplek (dry cassava), mineral, quail egg and pork oil. The high-fat diet was administered for seven weeks, starting from 2<sup>nd</sup> week to 8<sup>th</sup> week aiming to improve the lipid profile which included total cholesterol, LDL-C, HDL-C and TG levels.

### Lipid Profile Check

The measurement of total cholesterol levels was determined by enzymatic colorimetric with CHOD-PAP (Cholesterol Oxidase - Aminophenazone) method. Serum triacylglycerol levels can be enzymatically and colorimetrically examined using the GPO-PAP (Glycerol Phosphate Oxidase-Aminophenazone) method.

### Statistic Method

Data obtained from the study were analyzed using one-way ANOVA. Normally distributed and homogeneous data were analyzed further using Post-Hoc Multiple Comparison items Turkey. If the value was  $P < 0.05$ , it could be concluded statistically that there was a difference among of significant data variances. Data analysis used SPSS Statistic Program Version 23.

**Table 1** Mean  $\pm$  std.deviation

Variable	Mean $\pm$ std.deviation (gram)		
	K1	K2	K3
BBM1 (gram)	108.89 $\pm$ 1.900	108.00 $\pm$ 2.915	107.11 $\pm$ 2.147
BBM2 (gram)	118.33 $\pm$ 2.000	116.22 $\pm$ 4.206	113.89 $\pm$ 1.900
BBM3 (gram)	127.56 $\pm$ 3.941	124.67 $\pm$ 5.000	121.00 $\pm$ 2.000
BBM4 (gram)	138.33 $\pm$ 4.796	132.22 $\pm$ 6.241	128.56 $\pm$ 1.236
BBM5 (gram)	145.67 $\pm$ 3.808	139.56 $\pm$ 7.350	135.89 $\pm$ 2.522
BBM6 (gram)	155.78 $\pm$ 4.764	148.67 $\pm$ 6.385	142.89 $\pm$ 4.106
BBM7 (gram)	167.78 $\pm$ 3.833	157.78 $\pm$ 5.263	150.44 $\pm$ 4.503
BBM8 (gram)	177.78 $\pm$ 4.055	167.33 $\pm$ 3.162	162.67 $\pm$ 2.500
BBM9 (gram)	185.08 $\pm$ 4.153	175.33 $\pm$ 3.000	169.67 $\pm$ 1.803

Mean  $\pm$  SE (n = 9 for each group)

\*Significant at P &lt; 0.05

**Table 2** Mean  $\pm$  SD

Variable	Group		
	K1 Mean $\pm$ SD	K2 Mean $\pm$ SD	K3 Mean $\pm$ SD
TC (mg/dL)	86.33 $\pm$ 6.964	69.33 $\pm$ 9.487*	58.11 $\pm$ 10.191*
LDL-C (mg/dL)	31.56 $\pm$ 5.833	22.33 $\pm$ 2.828*	15.67 $\pm$ 2.179*
HDL-C (mg/dL)	30.78 $\pm$ 2.224	41.44 $\pm$ 5.199	46.56 $\pm$ 6.425
TG (mg/dL)	196.67 $\pm$ 14.089	182.67 $\pm$ 6.910*	149.78 $\pm$ 7.629*

Mean  $\pm$  SE (n = 9 for each group)

\*Significant at P &lt; 0.05

## RESULTS

### The Influence of High Fat Feeding on Mouse Weight

Based on the data analysis, it can be concluded that the average weight results of K1, K2 and K3 group rats tend to increase (table 1).

The increase in body weight of the rats began to occur at 2<sup>nd</sup> week, after the K1, K2, and K3 groups were given a high-fat diet (Figure 1). The results of this study showed that high-fat feeding successfully increased the weight of the rats. The pork and quail eggs are foods that contain high levels of fatty acid and cholesterol when compared to the other animal oils.

### Effect of giving Pacitanese sweet orange peel extract on lipid profile

Lipid profile parameters tested in this study were TC, LDL-C, HDL-C, and TG. The average and SD results of the rat lipid profiles including total TC, LDL-C, HDL-C and TG levels in the K1, K2, and K3 groups are summarized in table 2.

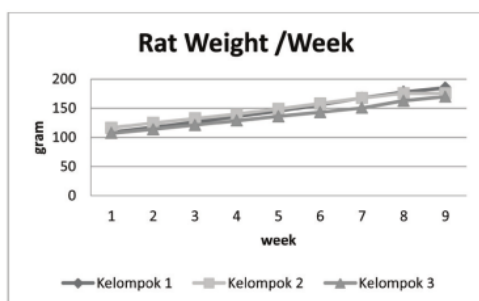
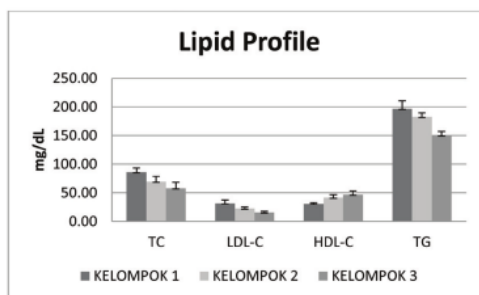
TC concentration in K2 and K3 group treated with an extract of Pacitanese sweet orange peel with a dosage of CMC-Na 1% dose 500 mg/kg BW and CMC-Na 1% dose 750 mg/kg BW lower than the K1 group. The decrease of TC levels significantly occurred in groups of K2 and K3. Levels of LDL-C in the K2 and K3 groups treated with an extract of Pacitanese sweet orange leaf were found to be lower in LDL-C than in the K1 group. The decrease of LDL-C level significantly occurred in groups of K2 and K3. On HDL-C examination, the K2 and K3 groups were higher than in the K1 group. The levels of HDL-C in the group K2 and K3 were not significantly greater than in the K1 group.

## DISCUSSION

The increase in body weight of rats in this study is in line with the assertion that the type of food consumed can affect weight.<sup>9</sup> The occurrence of dyslipidemia in white rats was determined on the 15th day after high fat-induced feeding, which was characterized by increased rat body weight and total cholesterol levels greater than 54 mg / dL with normal values of 10 – 54 mg / dL.<sup>10</sup>

The results of this study are in line with the research conducted by Santiago which found that high-fat diet would lead to higher lipid profile values.<sup>11</sup> In our study, the lipid profile of K2 and K3 groups tend to be lower than K1.

In this study, the administration of high-fat diet began to be administered in the second week aimed

**Figure 1** Rat Weight Mean/week**Figure 2** Lipid Profile

at increasing the lipid profile which includes <sup>4</sup>total cholesterol, LDL-C, HDL-C and TG levels. The results showed that the high-fat feeding (Table 2) successfully increased levels of total cholesterol significantly.

Lipids derived from food will undergo digestion process in the intestine into free fatty acids, triacylglycerol, phospholipids, and cholesterol. In the free fatty acid intestine, triacylglycerol, phospholipids, and cholesterol are processed and absorbed into the bloodstream in the form of chylomicrons. High levels of lipids in the diet will cause cholesterol absorption during digestion in the intestine to increase. Increased lipid absorption can lead to a condition of dyslipidemia that is characterized by elevated total cholesterol, LDL-C, and triacylglycerol levels and decreased levels of HDL-C in the blood.<sup>2</sup>

The reduction of LDL-C level may occur due to hesperidin content in the peel of Pacitanese sweet orange where the mechanism of action of hesperidin is estimated by inhibition of reductase HMG-CoA enzyme activity which reduces the cholesterol synthesis in the liver.<sup>4</sup> The decrease of cholesterol synthesis in the liver stimulates the formation of more LDLR. LDLR is a receptor that functions to enter LDL-C in the blood into the liver, the more formation of LDLR can cause LDL-C in the blood to be reduced.<sup>2</sup>

Some literature stated that in the peel of sweet orange contains a d-limonene compound which could affect to lipid profile by altering PPAR activation. PPAR (Peroxisome proliferator-activated receptors) is a transcription factor of nuclear receptors super family which modulate lipid metabolism.<sup>5</sup> Activating PPAR could alter the total cholesterol levels in the blood by inhibiting NPC1L1 activity in the intestinal wall. NPC1L1 is a transporter in charge of bringing cholesterol into the blood.<sup>6</sup>

Orange peel also contains water soluble fiber pectin that also has a cholesterol lowering effect by binding to cholesterol contained in the digestive system, thus preventing it to be absorbed into the bloodstream. The higher the viscosity of pectin, it will be more efficient in absorbing cholesterol because it stimulates the excretion of bile acids and neutral sterols. Pectin also forms mycers and bile acids with low diffusion rate through the bolus to bind cholesterol to the gastrointestinal tract.<sup>12</sup> This theory had been proved by Mattes who found that pectin can lower cholesterol levels in the blood by this mechanism. He also stated that by consuming at least 6 grams of pectin per day will be able to

reduce blood cholesterol levels up to 13% within two weeks.<sup>13</sup>

## CONCLUSION

Administration of Pacitanese sweet orange peel extract with dose of CMC-Na 1% dose 500 mg/kg BW and CMC-Na 1% dose 750 mg/kg BW for six weeks on w<sup>4</sup> male Wistar rats could significantly decrease total cholesterol, LDL-C, and TG, however, cannot increase HDL-C levels

## REFERENCES

- Shah SZA, Devrajani BR, Devrajani T, Bibi I. 2008. Frequency of Dyslipidemia in Obese versus Non-obese in relation to Body Mass Index (BMI), Waist Hip Ratio (WHR) and Waist Circumference (WC). *Pakistan Journal of Science*; 62 (1). pp. 27-31.
- Mayes, PA. Lipid transport and storage in Muray, RK, Granner, DK, & Rodwell, VW, 2009, Harper Biochemistry, 27<sup>th</sup> Edition, EGC, Jakarta. pp. 225-249
- Hatamipour MS, Majidi SM, Abdi M, Farbodnia, 2004. Potentials for industrial utilization of citrus byproducts, CHISA 2004. Proceeding of the 16th International Congress for Chemical and Process Engineering, August 22-26, 2004, Prague, Czech Republic. pp. 9263
- Garg A, Garg S, Zaneveld J D, Singla A K, Chemistry and pharmacology of the citrus bioflavonoid hesperidin. *Phytother. 2001 Res.*;15: pp. 655-669
- Jidong S, D-Limonene: Safety and Clinical Applications 2007, Volume 12, Number 3. pp. 259-264
- Li T, Chiang JY. 2009. Regulation of Bile Acid and Cholesterol metabolism by PPARs. Downloaded from [http://openi.nlm.nih.gov/details/result.2.p?img=2712638\\_PPARG2009-50](http://openi.nlm.nih.gov/details/result.2.p?img=2712638_PPARG2009-50)
- Cesar TB, Aptekmann NP, Araujo MP, Vinagre C, Maranhao RC. Orange juice decreases low-density lipoprotein cholesterol in hypercholesterolemia subject and improves lipid transfer to high-density lipoprotein in normal and hypercholesterolemic subjects. *Nutrition research* 7 10; 30: pp.689-694
- Morin B, Nichols LA, Zalasky KM, Davis JW, Manthey JA, Holland LJ. 2008. The citrus flavonoids hesperetin and nobiletin differentially regulate low-density lipoprotein receptor gene transcription in hepg2 liver cells. *J Nutr*;138(7): pp. 1274-1281
- Almatsier S. 2003 Prinsip Dasar ilmu gizi. Jakarta: PT Gramedia Pustaka Utama. pp. 64-72, 150, 185-200, 271.
- Kusumawati D. 2004. Bersahabat dengan Hewan Coba, edisi 1. Yogyakarta: UGM Press, pp. 8-73
- Santiago V. A. J., Jayachitra, J., Shenbagam, M. & Nalini, N., 2010. D-Limonene attenuates blood pressure and improves the lipid and antioxidant status in high-fat diet and L-NAME treated rats. *J. Pharm. Sci.* 11, pp.752-758
- Sharma, B.R., L, Naresh, Dhuldoya, N.C., Merchant, S.U., Merchant, U.C. An Overview of Pectins. *Times Food Processing Journal*, 2006 June-July Issue, pp. 44-51
- Mattes, Frank. Cholesterol and the Power of Pectin. *Herbstreith & Fox Inc* 2005. Elmsford/NY, USA



This work is licensed under a Creative Commons Attribution



# Hasil Cek Plagiasi Jurnal Dampak Lapisan Konstruksi Atap terhadap Suhu Ruang

## ORIGINALITY REPORT

8%

SIMILARITY INDEX

%

INTERNET SOURCES

4%

PUBLICATIONS

6%

STUDENT PAPERS

## PRIMARY SOURCES

1

Submitted to Universitas Airlangga

Student Paper

1%

2

Ricardo Tighe-Neira, Miren Alberdi, Patricio Arce-Johnson, Jesús L. Romero-Romero et al. "Chapter 9 Foods with Functional Properties and their Potential Uses in Human Health", IntechOpen, 2017

Publication

1%

3

Submitted to Udayana University

Student Paper

1%

4

Ashwani Koul, Aperapar Singh, Rajat Sandhir. "Effect of  $\alpha$ -Tocopherol on the Cardiac Antioxidant Defense System and Atherogenic Lipids in Cigarette Smoke-Inhaling Mice", Inhalation Toxicology, 2008

Publication

1%

5

Submitted to Universitas Sebelas Maret

Student Paper

1%

Submitted to Universitas Brawijaya

Wei Deng, Duan Jiang, Yi Fang, Heng Zhou et al. "Hesperetin protects against cardiac remodelling induced by pressure overload in mice", Journal of Molecular Histology, 2013

Publication

Exclude quotes On

Exclude matches < 20 words

Exclude bibliography On