

Lampiran 1. Spesifikasi material

Home Stainless Steel ▾ Carbon Steel ▾ Alloy Steel ▾ Corten Steel ▾ Abrasion Resistant ▾ High Strength Aluminum Special Alloys ▾

Dimension Range : 21.3-1219mm

EN 10210 S355J2H Carbon Steel Pipes Chemical Composition :

Grade	C	Si	Mn	P	S
S355J2H (1.0576)	max 0.22	max 0.55	max 1.6	max 0.03	max 0.03

S355J2H EN 10210 Seamless Pipes Mechanical Properties :

Specification	EN10210 S355J2H
Tensile Strength Rm N/mm ² 3 ≤ T ≤ 10mm	470 - 630
Yield Strength ReL Min. N/mm ² T ≤ 16mm	355
Min Elongation % T ≤ 40mm on gauge length 5.65 - 90	22
Impact properties Minimum Ave energy (J) at -20°C	27

Hot Forming Heat Treatment :

Hot Forming Temperature °C	Cooling Type	Normalizing 1	Heat Treatment Stress relieving anneal 2	Cooling Type
700-750	Air	820-850°C	540-630°C	Air

Other Types of S355J2H EN 10210 Carbon Steel Pipes and Tubes

S355J2H EN 10210 Pipe	S355J2H EN 10210 Tube
Carbon Steel S355J2H EN 10210 Pipe	Carbon Steel S355J2H EN 10210 Tube
S355J2H EN 10210 Pipes Exporter	S355J2H EN 10210 Tubing Stockist
EN10210 S355J2H Seamless Pipe in Iraq	EN10210 S355J2H Random Tubes
EN 10210 - RMS - Rectangular Hollow Hot Formed Sections	API tubing EN 10210 S355J2H Exports
EN 10210 S355J2H Hot Rolled Rectangular Pipe	Seamless Tubular Hot Formed Structural Hollow Sections
EN 10210 S355J2H Hot Rolled Square Pipes in Paris	S355J2H Tubing Stockist in India
SAE1020-1025 Hot Rolled Square Pipes in Paris	S355J2H Tubing Stockist in India

Material : A990G1/A572 Gr 65, A516 Gr 65, A316 Gr 70, A284Gr B, SS400, SS300, G05B A36, A32, 110K2, 10K, Q235Gr B, 10K

SAE1020, SAE1045 Q195, Q235, Q345, SS400, ASTM A36, E235B

Process of Manufacturing : Hot-Rolled (HR)

EN 10025 S355J2 N Steel Plate Equivalent Standard :

Grade	DIN	EN	JIS	ASTM
EN 10025 S355J2+N	17100 S152-3N	10025-2:2004 S355J2+N	G3106 SM490YB	A572-50

EN 10025 S355J2 N Chemical Composition :

C	Si	Mn	P	S	C.E.
max 0.22	max 0.55	max 1.60	max 0.035	max 0.035	max 0.047

EN 10025 S355J2 N Mechanical Properties :

Thickness (mm)	Yield Strength ReHmin (N / mm ²)	Tensile Strength Rmin (N / mm ²)	Elongation A5 min (%)	Impact Values Charpy-V-Notch Longitudinal Average from 3 Specimens Thk - 10 - 150mm.
3 ≤ thk ≤ 100	355-390	490-630	max 22	27 Joules at -20 °C

S355 J2+N Steel Plate Makes

ESSAR JINDAL STEEL & POWER WELSPUN

SS400
Chemical composition, standards and properties

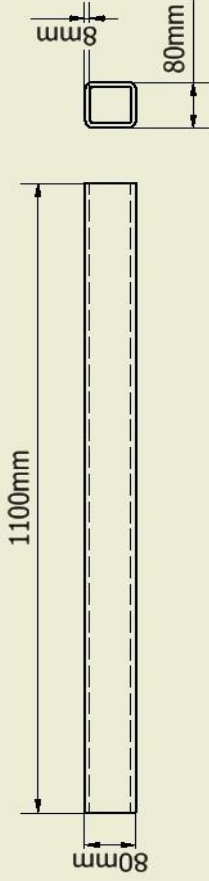
Grade :	SS400
Classification:	Structural steel
Standards:	JIS G 3101 : Rolled steels for general structure
Applications:	Hot-rolled steel used for general structure such as bridges, ships, rolling stocks and other

Chemical composition 成分 % of grade SS400

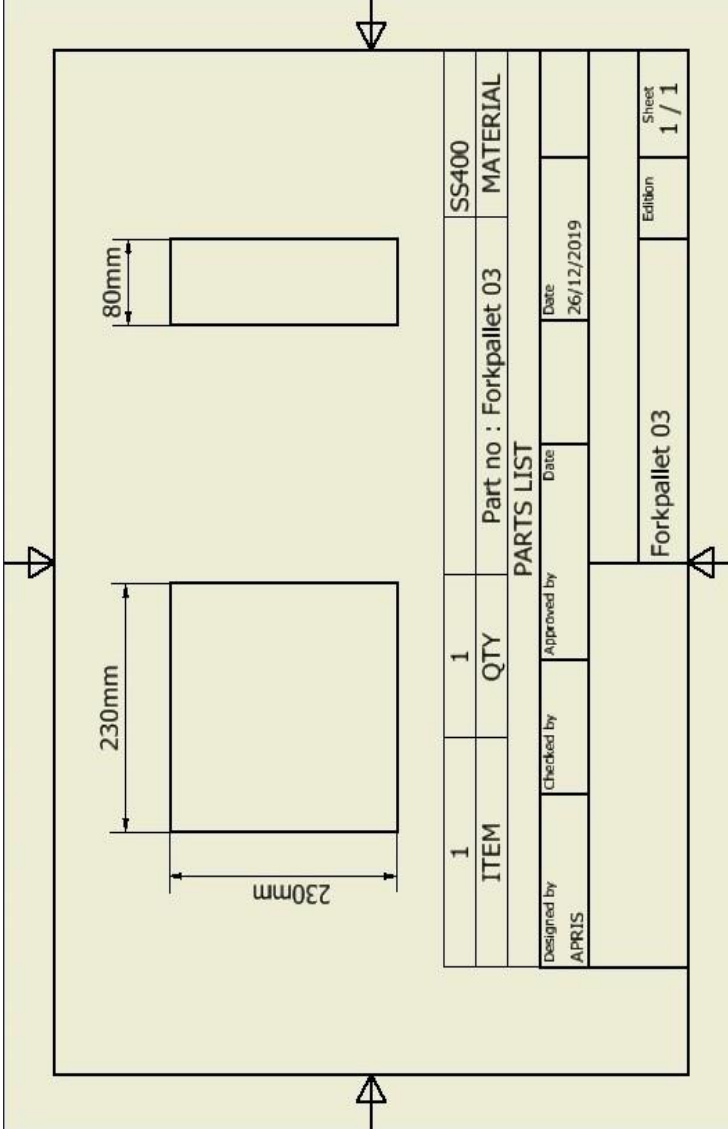
Alloy elements may be added as required	
P	S
max 0.05	max 0.05

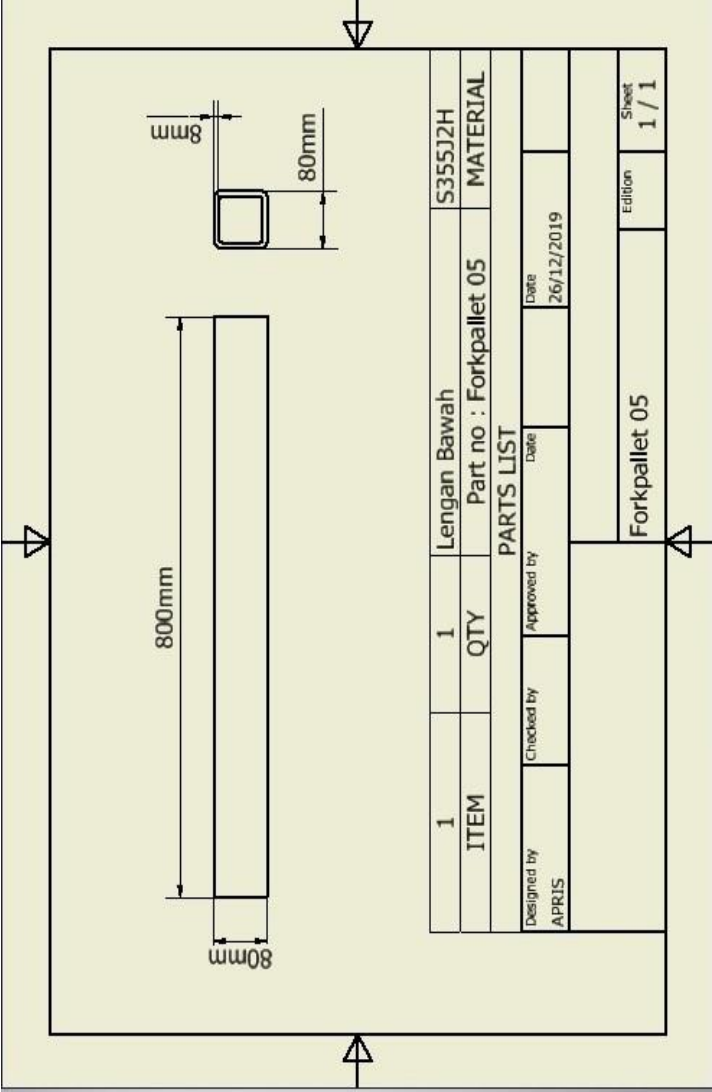
Mechanical properties of grade SS400

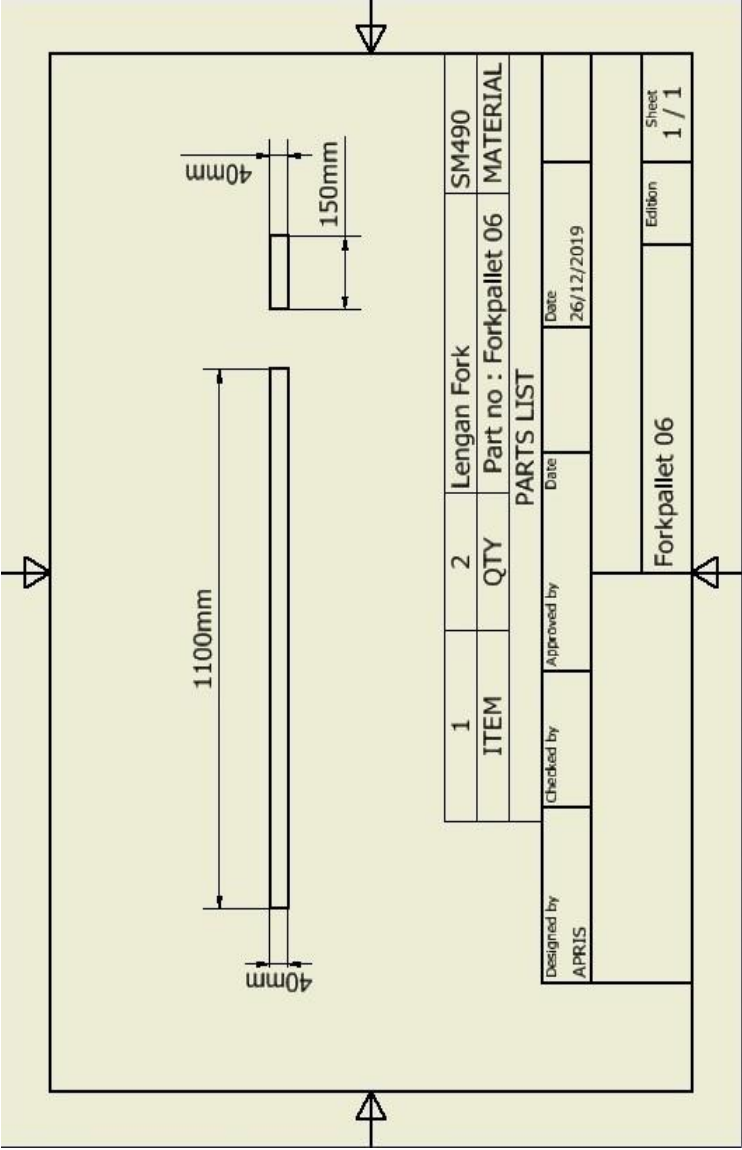
Assortment	Yield point or Proof stress	Tensile strength	Elongation	Reduction of area	Charpy impact strength
-	N/mm ²	N/mm ²	%	%	J/cm ²
Hot-rolled	205-245	400-510	17-23		

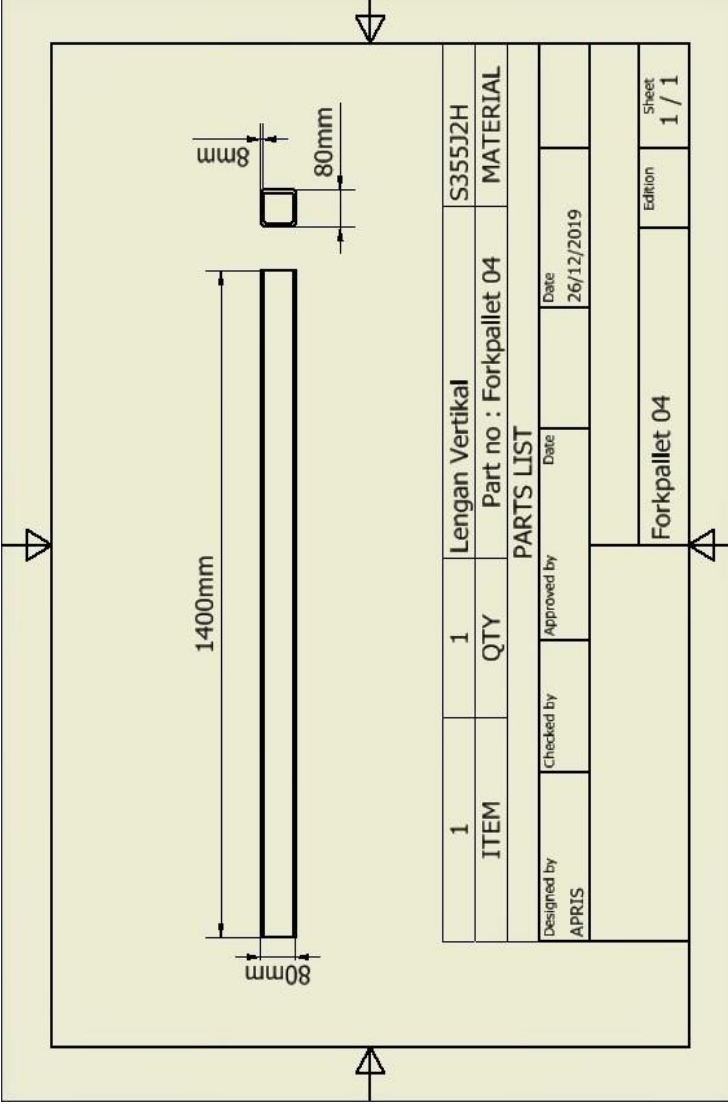


1	1	Lengan Atas	S355J2H
ITEM	QTY	Part no : forkpallet 02	MATERIAL
PARTS LIST			
Designed by APRIS	Checked by	Approved by	Date
			26/12/2019
Forkpallet 02		Edition	Sheet
		1 / 1	1 / 1





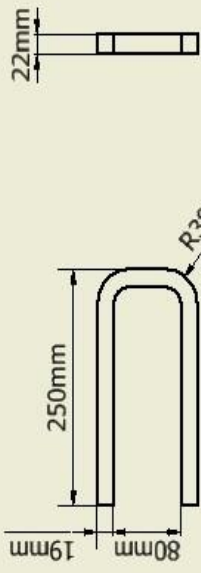




1	1	Lengan Vertikal	S355J2H
ITEM	QTY	Part no : Forkpallet 04	MATERIAL

PARTS LIST			
Designed by	Checked by	Approved by	Date
APRIS			26/12/2019

Forkpallet 04	
Edition	Sheet
	1 / 1



1	1	1	SS400
ITEM	QTY	Part no : Forkpallet 01	MATERIAL
PARTS LIST			
Designed by APRIS	Checked by	Approved by	Date 26/12/2019
Forkpallet 01		Edition	Sheet 1 / 1