

## Lampiran 1 Data Curah Hujan Stasiun Bareng Tahun 2007

Tgl	Jan	Feb	Mar	Apr	Mei	Jun	Jul	Agt	Sep	Okt	Nop	Des	
1	0	52	27	0	0	0	0	0	0	0	39	0	
2	0	41	24	0	0	0	0	0	0	0	0	14	
3	0	30	0	0	0	15	0	0	0	0	12	11	
4	0	8	4	0	0	0	0	0	0	0	29	0	
5	0	34	0	2	0	4	0	0	0	0	0	3	
6	0	6	4	0	0	0	0	0	0	0	0	0	
7	0	0	2	0	0	54	0	0	0	0	0	0	
8	0	0	5	0	0	0	0	0	0	0	0	1	
9	0	0	0	2	0	0	0	0	0	0	0	14	
10	0	0	0	0	0	0	0	0	0	40	0	0	
11	0	0	0	24	0	0	0	0	0	0	0	14	
12	0	6	0	26	0	0	0	0	0	0	0	10	
13	0	0	7	10	0	0	0	0	0	0	3	38	
14	0	0	28	28	0	0	0	0	0	0	3	0	
15	0	2	2	5	0	0	0	0	0	0	7	0	
16	0	0	0	0	0	0	0	0	0	0	0	1	
17	0	0	0	4	0	0	0	0	0	0	0	15	
18	1	52	0	5	0	0	0	0	0	0	0	0	
19	0	37	0	2	0	0	0	0	0	0	0	0	
20	0	59	22	4	0	0	0	0	0	0	0	0	
21	0	0	52	0	0	0	0	0	0	0	0	0	
22	0	2	32	8	0	0	0	0	0	0	0	0	
23	9	1	0	0	0	0	0	0	0	22	0	0	
24	0	1	0	0	0	0	0	0	0	18	0	25	
25	0	6	0	6	0	0	0	0	0	0	0	127	
26	0	10	39	8	0	4	0	0	0	0	2	3	
27	0	4	3	7	0	0	0	0	0	0	10	74	
28	20	0	0	0	0	32	0	0	0	2	32	0	
29	0	0	15	0	0	7	0	0	0	0	11	0	
30	0	0	36	0	0	9	0	0	0	0	0	40	
31	0	0	17	0	5	0	0	0	0	0	0	0	
Jml	0.0	0.0	0.0	0.0	0.0	0.0	0.0	0.0	0.0	0.0	0.0	0.0	
Jml 1	0.0	179.0	103.0	97.0	0.0	73.0	0.0	0.0	0.0	40.0	93.0	105.0	
Jml 2	30.0	172.0	216.0	44.0	5.0	52.0	0.0	0.0	0.0	42.0	55.0	285.0	
Rata2	0.0	0.0	0.0	0.0	0	0.0	0.0	0.0	0.0	0.0	0.0	0.0	
Max	20.0	59.0	52.0	28.0	5.0	54.0	0.0	0.0	0.0	40.0	39.0	127.0	
Min	0.0	0.0	0.0	0.0	0.0	0.0	0.0	0.0	0.0	0.0	0.0	0.0	
Jhh1	0.0	8.0	9.0	7.0	0.0	3.0	0.0	0.0	0.0	1.0	6.0	8.0	
Jhh2	3.0	9.0	8.0	8.0	1.0	4.0	0.0	0.0	0.0	3.0	4.0	7.0	
JH.T=	0 mm		Max. T=		127.0 mm		Min. T=		0 mm		Jhh. T=		47.0 hh

## Lampiran 2 Data Curah Hujan Stasiun Bareng Tahun 2008

Tgl	Jan	Feb	Mar	Apr	Mei	Jun	Jul	Agt	Sep	Okt	Nop	Des	
1	33	6	11	0	0	0	0	0	0	0	0	0	
2	0	11	9	24	0	0	0	0	0	0	5	0	
3	31	0	0	0	0	0	0	0	0	0	20	0	
4	11	20	0	0	0	0	0	0	0	0	3	0	
5	10	0	0	0	0	0	0	0	0	0	6	0	
6	0	20	0	0	0	0	0	0	0	0	0	28	
7	29	0	0	0	0	0	0	0	0	0	0	12	
8	0	0	19	0	0	0	0	0	0	7	0	6	
9	0	0	12	0	0	0	0	0	0	0	0	0	
10	0	6	9	0	0	0	0	0	0	0	0	4	
11	0	0	19	0	0	0	0	0	0	0	9	3	
12	0	3	0	0	0	0	0	0	0	0	5	53	
13	0	0	0	0	0	0	0	0	0	0	6	2	
14	0	0	0	0	0	0	0	0	0	0	0	0	
15	0	0	0	0	0	0	0	0	0	0	0	0	
16	0	0	0	0	0	0	0	0	0	0	45	0	
17	0	0	0	0	0	0	0	0	0	0	6	0	
18	8	0	3	0	0	0	0	0	0	0	0	11	
19	0	0	45	0	0	0	0	0	0	7	0	0	
20	0	0	0	0	0	0	0	0	0	0	23	0	
21	0	0	13	0	0	0	0	0	0	0	4	0	
22	0	31	0	0	0	0	0	0	0	0	2	0	
23	0	0	0	0	0	0	0	0	0	18	0	0	
24	0	20	0	0	0	0	0	0	0	4	8	0	
25	0	0	0	0	0	0	0	0	0	0	3	0	
26	0	0	5	0	0	0	0	0	0	39	0	0	
27	0	0	0	0	0	0	0	0	0	0	0	0	
28	5	4	0	0	0	0	0	0	0	2	0	0	
29	0	10	0	0	0	0	0	0	0	0	0	0	
30	3	0	0	0	0	0	0	0	0	0	0	11	
31	0	0	0	0	0	0	0	0	0	0	0	0	
Jml	0.0	0.0	0.0	0.0	0.0	0.0	0.0	0.0	0.0	0.0	0.0	0.0	
Jml 1	114.0	66.0	79.0	24.0	0.0	0.0	0.0	0.0	0.0	7.0	54.0	108.0	
Jml 2	16.0	65.0	66.0	0.0	0.0	0.0	0.0	0.0	0.0	70.0	91.0	22.0	
Rata2	0.0	0.0	0.0	0.0	0	0.0	0.0	0.0	0.0	0.0	0.0	0.0	
Max	33.0	31.0	45.0	24.0	0.0	0.0	0.0	0.0	0.0	39.0	45.0	53.0	
Min	0.0	0.0	0.0	0.0	0.0	0.0	0.0	0.0	0.0	0.0	0.0	0.0	
Jhh1	5.0	6.0	6.0	1.0	0.0	0.0	0.0	0.0	0.0	1.0	7.0	7.0	
Jhh2	3.0	4.0	4.0	0.0	0.0	0.0	0.0	0.0	0.0	5.0	7.0	2.0	
JH.T=	0 mm		Max. T=		53,0 mm		Min. T=		0 mm		Jhh. T=		25,0 hh

### Lampiran 3 Data Curah Hujan Stasiun Bareng Tahun 2009

Tgl	Jan	Feb	Mar	Apr	Mei	Jun	Jul	Agt	Sep	Okt	Nop	Des	
1	0	59	0	59	5	0	0	0	0	0	0	0	
2	0	18	7	0	0	10	0	0	0	0	0	0	
3	0	0	24	0	0	0	0	0	0	0	0	0	
4	2	20	50	0	0	35	0	0	0	0	0	0	
5	0	24	51	0	0	0	0	0	0	0	0	0	
6	0	0	0	0	0	0	0	0	0	0	0	0	
7	0	0	3	0	0	0	0	0	0	0	0	0	
8	12	21	0	0	0	0	0	0	0	0	0	0	
9	75	26	0	0	0	0	0	0	0	0	0	0	
10	7	0	0	0	6	0	0	0	0	0	0	0	
11	25	0	0	0	0	0	0	0	0	0	0	0	
12	11	0	0	0	15	0	0	0	0	0	0	0	
13	3	0	3	12	0	0	0	0	0	0	20	0	
14	0	0	0	0	0	0	0	0	0	0	0	0	
15	0	9	30	4	0	0	0	0	0	0	29	0	
16	9	0	0	50	5	0	0	0	0	0	0	0	
17	0	20	83	11	0	0	0	0	0	0	17	0	
18	24	8	0	0	19	0	0	0	0	0	2	0	
19	3	9	0	0	4	0	0	0	0	0	25	0	
20	0	0	0	34	33	0	0	0	0	0	0	0	
21	0	23	0	0	12	0	0	0	0	0	0	0	
22	0	25	29	0	0	0	0	0	0	0	0	0	
23	0	4	0	0	0	0	0	0	0	0	0	0	
24	0	10	0	0	0	0	0	0	0	0	0	0	
25	85	30	0	0	0	0	0	0	0	0	0	0	
26	41	24	0	0	15	0	0	0	0	0	0	8	
27	22	24	0	0	0	0	0	0	0	0	0	4	
28	40	9	3	0	0	0	0	0	0	0	0	0	
29	3	0	0	0	0	0	0	0	0	0	0	0	
30	43	0	0	0	4	0	0	0	0	0	0	13	
31	10	0	0	0	0	0	0	0	0	0	0	0	
Jml	0.0	0.0	0.0	0.0	0.0	0.0	0.0	0.0	0.0	0.0	0.0	0.0	
Jml 1	135.0	177.0	168.0	75.0	26.0	45.0	0.0	0.0	0.0	0.0	49.0	0.0	
Jml 2	280.0	186.0	115.0	95.0	92.0	0.0	0.0	0.0	0.0	0.0	44.0	25.0	
Rata2	0.0	0.0	0.0	0.0	0	0.0	0.0	0.0	0.0	#####	0.0	0.0	
Max	85.0	59.0	83.0	59.0	33.0	35.0	0.0	0.0	0.0	0.0	29.0	13.0	
Min	0.0	0.0	0.0	0.0	0.0	0.0	0.0	0.0	0.0	0.0	0.0	0.0	
Jhh1	7.0	7.0	7.0	3.0	3.0	2.0	0.0	0.0	0.0	0.0	2.0	0.0	
Jhh2	10.0	11.0	3.0	3.0	7.0	0.0	0.0	0.0	0.0	0.0	3.0	3.0	
JH.T=	0 mm		Max. T=		85.0 mm		Min. T=		0 mm		Jhh. T=		40.0 hh

### Lampiran 4 Data Curah Hujan Stasiun Bareng Tahun 2010

Tgl	Jan	Feb	Mar	Apr	Mei	Jun	Jul	Agt	Sep	Okt	Nop	Des	
1	0	0	20	0	0	0	0	0	0	0	0	0	
2	8	25	0	29	0	0	0	0	0	0	25	18	
3	0	0	15	0	12	0	0	0	0	0	12	20	
4	0	32	0	0	5	0	0	0	0	0	0	16	
5	0	4	71	8	47	0	0	0	0	0	10	16	
6	110	0	3	39	0	0	0	0	40	0	0	22	
7	0	21	0	0	0	0	0	0	18	5	23	21	
8	0	21	0	0	0	0	0	0	0	0	0	19	
9	6	8	0	0	17	0	0	0	0	0	14	10	
10	54	0	0	7	13	0	0	0	0	0	12	7	
11	0	0	16	0	4	6	0	0	0	0	15	4	
12	14	0	18	17	0	0	0	0	42	0	0	0	
13	10	40	48	0	0	0	0	0	0	0	0	20	
14	0	0	0	0	0	0	8	0	0	0	0	41	
15	0	30	2	0	5	17	0	0	0	85	0	0	
16	0	18	0	0	17	18	0	0	0	0	0	12	
17	0	7	58	10	12	42	0	0	8	26	0	21	
18	0	3	30	0	0	0	10	0	0	8	34	18	
19	0	26	0	5	0	0	0	0	0	20	0	0	
20	49	9	0	0	0	0	0	0	0	14	0	34	
21	8	37	0	0	0	0	0	0	18	0	0	5	
22	5	31	0	0	11	0	0	0	0	0	4	22	
23	0	7	0	10	0	0	0	0	48	0	0	0	
24	39	0	0	22	0	0	0	0	0	0	0	45	
25	9	0	5	36	9	0	0	0	0	0	0	0	
26	8	41	0	29	5	0	20	0	0	0	22	0	
27	33	0	0	0	46	0		0	0	0	0	0	
28	3	3	46	25	0	0	12	0	0	0	14	0	
29	0	0	16	12	15	0	0	0	0	0	15	0	
30	0	0	14	0	0	0	0	0	0	11	0	0	
31	0	0	55	0	42	0	0	0	0	15	0	0	
Jml	0.0	0.0	0.0	0.0	0.0	0.0	0.0	0.0	0.0	0.0	0.0	0.0	
Jml 1	202.0	181.0	193.0	100.0	103.0	23.0	8.0	0.0	100.0	90.0	111.0	214.0	
Jml 2	154.0	182.0	224.0	149.0	157.0	60.0	42.0	0.0	74.0	94.0	89.0	157.0	
Rata2	0.0	0.0	0.0	0.0	0.0	0.0	0.0	0.0	0.0	0.0	0.0	0.0	
Max	110.0	41.0	71.0	39.0	47.0	42.0	20.0	0.0	48.0	85.0	34.0	45.0	
Min	0.0	0.0	0.0	0.0	0.0	0.0	0.0	0.0	0.0	0.0	0.0	0.0	
Jhh1	6.0	8.0	8.0	5.0	7.0	2.0	1.0	0.0	3.0	2.0	7.0	12.0	
Jhh2	8.0	10.0	7.0	8.0	8.0	2.0	3.0	0.0	3.0	6.0	5.0	7.0	
JH.T=	0 mm		Max. T=		110.0 mm		Min. T=		0 mm		Jhh. T=		67.0 hh

## Lampiran 5 Data Curah Hujan Stasiun Bareng Tahun 2011

Tgl	Jan	Feb	Mar	Apr	Mei	Jun	Jul	Agt	Sep	Okt	Nop	Des		
1	0	0	35	0	16	0	0	0	0	0	0	0		
2	34	37	33	21	17	0	0	0	0	0	0	0		
3	19	12	0	0	7	0	0	0	0	0	10	9		
4	13	0	0	15	0	0	0	0	0	0	6	31		
5	0	35	0	0	0	0	0	0	0	0	23	0		
6	0	0	25	0	40	0	0	0	0	0	4	41		
7	0	0	5	0	63	0	0	0	0	0	0	0		
8	5	0	4	0	0	0	0	0	0	0	43	0		
9	17	0	15	0	7	0	0	0	0	0	24	0		
10	0	11	25	20	0	0	0	0	0	0	12	0		
11	4	0	0	12	0	0	0	0	0	0	11	0		
12	0	0	7	14	0	0	0	0	0	0	0	0		
13	0	0	23	0	0	0	0	0	0	0	0	22		
14	0	0	0	11	15	0	0	0	0	0	15	0		
15	0	0	0	0	0	0	0	0	0	0	0	64		
16	25	5	0	68	50	0	0	0	0	0	0	6		
17	0	9	0	0	0	0	0	0	0	0	0	7		
18	21	15	0	0	0	0	0	0	0	0	17	0		
19	12	0	0	0	0	0	0	0	0	0	0	0		
20	0	23	0	0	0	0	0	0	0	0	0	8		
21	107	0	5	0	0	0	0	0	0	0	0	53		
22	4	0	0	0	0	0	0	0	0	0	0	13		
23	35	4	0	0	0	0	0	0	0	0	7	0		
24	0	16	0	0	0	0	0	0	0	0	0	0		
25	33	13	27	0	0	0	0	0	0	0	15	0		
26	25	15	25	0	0	0	0	0	0	0	0	12		
27	8	0	11	0	0	0	0	0	0	0	0	39		
28	7	14	32	0	0	10	0	0	0	0	15	0		
29	7	0	58	0	0	0	0	0	0	0	26	0		
30	16	0	8	26	0	0	0	0	0	0	0	0		
31	0	0	0	0	0	0	0	0	0	0	0	0		
Jml	0.0	0.0	0.0	0.0	0.0	0.0	0.0	0.0	0.0	0.0	0.0	0.0		
Jml 1	92.0	95.0	172.0	93.0	165.0	0.0	0.0	0.0	0.0	0.0	148.0	167.0		
Jml 2	300.0	114.0	166.0	94.0	50.0	10.0	0.0	0.0	0.0	0.0	80.0	138.0		
Rata2	0.0	0.0	0.0	0.0	0.0	0.0	#####	#####	#####	#####	0.0	0.0		
Max	107.0	37.0	58.0	68.0	63.0	10.0	0.0	0.0	0.0	0.0	43.0	64.0		
Min	0.0	0.0	0.0	0.0	0.0	0.0	0.0	0.0	0.0	0.0	0.0	0.0		
Jhh1	6.0	4.0	9.0	6.0	7.0	0.0	0.0	0.0	0.0	0.0	9.0	5.0		
Jhh2	12.0	9.0	7.0	2.0	1.0	1.0	0.0	0.0	0.0	0.0	5.0	7.0		
JH.T=	0 mm		Max. T=		107.0 mm		Min. T=		0 mm		Jhh. T=		44.0 hh	

## Lampiran 6 Data Curah Hujan Stasiun Bareng Tahun 2012

Tgl	Jan	Feb	Mar	Apr	Mei	Jun	Jul	Agt	Sep	Okt	Nop	Des	
1	39	8	0	0	25	0	0	0	0	0	0	0	
2	12	0	13	2	4	0	0	0	0	0	0	0	
3	45	0	0	0	0	0	0	0	0	0	0	35	
4	4	32	0	0	0	0	0	0	0	0	5	0	
5	0	15	5	9	23	0	0	0	0	0	20	0	
6	0	0	2	3	0	0	0	0	0	0	3	28	
7	5	0	15	0	0	0	0	0	0	0	0	0	
8	36	0	15	0	0	0	0	0	0	0	40	0	
9	0	0	0	0	0	8	0	0	0	0	21	0	
10	52	0	29	0	0	0	0	0	0	0	10	0	
11	26	0	14	0	0	4	0	0	0	0	9	0	
12	10	0	14	0	0	0	0	0	0	0	0	0	
13	0	0	0	0	0	0	0	0	0	0	0	20	
14	21	0	7	0	6	0	0	0	0	0	0	0	
15	77	0	10	0	0	0	0	0	0	0	0	64	
16	0	11	0	0	0	0	0	0	0	0	0	5	
17	5	23	0	0	0	0	0	0	0	0	0	8	
18	10	0	0	0	0	0	0	0	0	0	15	0	
19	16	34	0	0	0	0	0	0	0	0	0	0	
20	12	40	0	0	0	0	0	0	0	0	0	10	
21	0	0	0	0	0	0	0	0	0	0	0	48	
22	0	0	0	0	0	0	0	0	0	0	0	9	
23	10	0	0	0	0	0	0	0	0	0	4	0	
24	35	0	0	0	0	0	0	0	0	0	0	0	
25	0	0	0	0	0	0	0	0	0	0	12	0	
26	0	45	0	0	0	0	0	0	0	0	0	10	
27	9	0	0	0	0	0	0	0	0	0	0	33	
28	0	9	0	0	0	0	0	0	0	0	10	0	
29	0	5	0	0	0	0	0	0	0	0	24	0	
30	38	0	0	0	0	0	0	0	0	0	0	0	
31	0	0	35	0	0	0	0	0	0	0	0	0	
Jml	0.0	0.0	0.0	0.0	0.0	0.0	0.0	0.0	0.0	0.0	0.0	0.0	
Jml 1	327.0	55.0	124.0	14.0	58.0	12.0	0.0	0.0	0.0	0.0	108.0	147.0	
Jml 2	135.0	167.0	35.0	0.0	0.0	0.0	0.0	0.0	0.0	0.0	65.0	123.0	
Rata2	0.0	0.0	0.0	0.0	0.0	0.0	#####	0.0	#####	#####	0.0	0.0	
Max	77.0	45.0	35.0	9.0	25.0	8.0	0.0	0.0	0.0	0.0	40.0	64.0	
Min	0.0	0.0	0.0	0.0	0.0	0.0	0.0	0.0	0.0	0.0	0.0	0.0	
Jhh1	11.0	3.0	10.0	3.0	4.0	2.0	0.0	0.0	0.0	0.0	7.0	4.0	
Jhh2	8.0	7.0	1.0	0.0	0.0	0.0	0.0	0.0	0.0	0.0	5.0	7.0	
JH.T=	0 mm		Max. T=		77.0 mm		Min. T=		0 mm		Jhh. T=		28.0 hh

## Lampiran 7 Data Curah Hujan Stasiun Bareng Tahun 2013

Tgl	Jan	Feb	Mar	Apr	Mei	Jun	Jul	Agt	Sep	Okt	Nop	Des	
1	0	0	0	0	0	0	0	0	0	0	0	0	
2	0	0	0	0	0	0	0	0	0	0	0	30	
3	40	0	0	0	0	2	0	0	0	0	5	0	
4	2	30	0	0	0	0	0	0	0	0	20	29	
5	0	12	0	0	0	0	0	0	0	0	10	0	
6	0	0	0	0	0	0	0	0	0	0	0	0	
7	3	0	10	0	25	0	0	0	0	0	0	16	
8	30	0	0	0	0	0	0	0	0	0	0	0	
9	0	0	0	0	0	0	0	0	0	0	10	0	
10	0	0	3	0	0	0	0	0	0	0	0	0	
11	21	0	0	0	6	0	0	0	0	0	30	0	
12	8	0	0	0	10	0	0	0	0	0	24	0	
13	0	0	10	0	0	0	0	0	0	0	22	0	
14	18	0	0	0	0	0	0	0	0	0	0	35	
15	0	9	28	0	0	0	0	0	0	0	0	20	
16	0	20	10	0	0	10	0	0	0	0	0	11	
17	2	0	0	2	0	0	0	0	0	0	0	0	
18	0	0	0	0	0	0	0	0	0	0	0	0	
19	0	31	5	0	3	0	0	0	0	0	13	0	
20	9	25	9	0	0	0	0	0	0	0	0	14	
21	0	0	0	0	0	0	0	0	0	0	0	11	
22	0	0	0	0	0	0	0	0	0	0	9	0	
23	8	0	0	8	0	0	0	0	0	0	0	0	
24	0	0	0	0	0	0	0	0	0	0	0	23	
25	0	0	0	0	0	0	0	0	0	0	18	9	
26	0	45	0	0	0	0	0	0	0	0	16	7	
27	7	0	0	0	0	0	0	0	0	0	0	0	
28	0	0	0	3	0	0	0	0	0	0	0	0	
29	0	0	0	0	0	0	0	0	0	0	0	0	
30	36	0	0	0	0	0	0	0	0	0	0	0	
31	0	0	10	0	0	0	0	0	0	0	0	0	
Jml	0.0	0.0	0.0	0.0	0.0	0.0	0.0	0.0	0.0	0.0	0.0	0.0	
Jml 1	122.0	51.0	51.0	0.0	41.0	2.0	0.0	0.0	0.0	0.0	121.0	130.0	
Jml 2	62.0	121.0	34.0	13.0	3.0	10.0	0.0	0.0	0.0	0.0	56.0	75.0	
Rata2	0.0	0.0	0.0	0.0	0.0	0.0	0.0	0.0	0.0	#####	0.0	0.0	
Max	40.0	45.0	28.0	8.0	25.0	10.0	0.0	0.0	0.0	0.0	30.0	35.0	
Min	0.0	0.0	0.0	0.0	0.0	0.0	0.0	0.0	0.0	0.0	0.0	0.0	
Jhh1	7.0	3.0	4.0	0.0	3.0	1.0	0.0	0.0	0.0	0.0	7.0	5.0	
Jhh2	5.0	4.0	4.0	3.0	1.0	1.0	0.0	0.0	0.0	0.0	4.0	6.0	
JH.T=	0 mm		Max. T=		45.0 mm		Min. T=		0 mm		Jhh. T=		28.0 hh

## Lampiran 8 Data Curah Hujan Stasiun Bareng Tahun 2014

Tgl	Jan	Feb	Mar	Apr	Mei	Jun	Jul	Agt	Sep	Okt	Nop	Des	
1	0	0	0	0	0	0	0	0	0	0	0	0	
2	0	27	0	24	0	0	0	0	0	0	0	0	
3	0	26	10	0	0	0	0	0	0	0	0	18	
4	0	13	25	0	19	0	0	0	0	0	0	7	
5	0	0	23	0	31	0	0	0	0	0	0	9	
6	39	10	18	0	9	0	0	0	0	0	5	0	
7	25	0	9	0	0	0	0	0	0	0	7	0	
8	0	0	0	13	0	0	0	0	0	0	3	33	
9	0	0	0	17	0	0	0	0	0	0	0	45	
10	0	0	0	0	9	0	0	0	0	0	0	20	
11	0	30	21	0	7	0	0	0	0	0	0	21	
12	0	28	0	0	0	0	0	0	0	0	0	9	
13	0	0	9	0	0	0	0	0	0	0	22	7	
14	0	0	17	23	0	0	0	0	0	0	9	0	
15	0	41	0	27	0	0	0	0	0	12	0	0	
16	18	12	0	0	0	0	0	0	0	0	0	35	
17	50	18	0	17	0	0	0	0	0	0	0	21	
18	7	0	24	31	0	0	0	0	0	0	0	0	
19	0	0	23	0	0	0	0	0	0	0	15	0	
20	0	0	0	0	0	0	0	0	0	9	0	10	
21	0	0	0	19	0	0	0	0	0	0	0	9	
22	13	0	0	0	0	0	0	0	0	0	0	1	
23	22	0	5	0	0	0	0	0	0	0	3	0	
24	0	0	17	0	0	0	0	0	0	0	0	0	
25	0	0	21	0	0	0	0	0	0	0	0	0	
26	0	20	0	0	0	0	0	0	0	0	22	5	
27	0	8	0	0	0	0	0	0	0	0	0	4	
28	0	17	7	33	0	0	0	0	0	0	0	0	
29	25	0	0	0	0	0	0	0	0	0	7	0	
30	0	0	0	0	0	0	0	0	0	0	0	0	
31	0	0	0	0	0	0	0	0	0	0	0	0	
Jml	0.0	0.0	0.0	0.0	0.0	0.0	0.0	0.0	0.0	0.0	0.0	0.0	
Jml 1	64.0	175.0	132.0	104.0	75.0	0.0	0.0	0.0	0.0	12.0	46.0	169.0	
Jml 2	135.0	75.0	97.0	100.0	0.0	0.0	0.0	0.0	0.0	9.0	47.0	85.0	
Rata2	0.0	0.0	-	0.0	0.0	#DIV/0!	#####	#####	#####	0.0	0.0	0.0	
Max	50.0	41.0	25.0	33.0	31.0	0.0	0.0	0.0	0.0	12.0	22.0	45.0	
Min	0.0	0.0	0.0	0.0	0.0	0.0	0.0	0.0	0.0	0.0	0.0	0.0	
Jhh1	2.0	7.0	8.0	5.0	5.0	0.0	0.0	0.0	0.0	1.0	5.0	9.0	
Jhh2	6.0	5.0	6.0	4.0	0.0	0.0	0.0	0.0	0.0	1.0	4.0	7.0	
JH.T=	0 mm		Max. T=		50.0 mm		Min. T=		0 mm		Jhh. T=		33.0 hh



## Lampiran 9 Data Curah Hujan Stasiun Bareng Tahun 2015

Tgl	Jan	Feb	Mar	Apr	Mei	Jun	Jul	Agt	Sep	Okt	Nop	Des	
1	0	27	0	0	0	0	0	0	0	0	0	0	
2	0	36	8	0	0	0	0	0	0	0	0	0	
3	0	80	16	0	20	0	0	0	0	0	0	0	
4	0	0	46	25	4	0	0	0	0	0	0	19	
5	0	33	41	0	9	0	0	0	0	0	0	3	
6	0	0	10	0	0	0	0	0	0	0	0	1	
7	0	0	9	16	0	0	0	0	0	0	0	7	
8	0	0	0	14	0	0	0	0	0	0	2	0	
9	0	32	22	0	0	0	0	0	0	0	3	17	
10	0	80	0	0	0	0	0	0	0	0	7	0	
11	0	0	0	0	0	0	0	0	0	0	0	62	
12	0	0	10	24	0	0	0	0	0	0	23	0	
13	38	42	9	29	0	0	0	0	0	0	5	13	
14	34	15	0	5	8	0	0	0	0	0	0	5	
15	0	36	21	7	4	0	0	0	0	0	0	12	
16	0	0	28	0	0	0	0	0	0	0	12	5	
17	0	0	0	0	0	0	0	0	0	0	0	12	
18	19	15	3	0	0	0	0	0	0	0	0	5	
19	43	0	3	0	0	0	0	0	0	0	0	13	
20	30	300	0	20	0	0	0	0	0	0	0	34	
21	0	0	0	15	0	0	0	0	0	0	0	3	
22	0	0	3	0	0	0	0	0	0	0	8	9	
23	0	0	18	0	0	0	0	0	0	0	0	0	
24	0	20	28	35	0	0	0	0	0	0	0	15	
25	14	0	0	0	0	0	0	0	0	0	1,5	13	
26	27	17	0	0	0	0	0	0	0	0	39	2	
27	0	7	0	0	0	0	0	0	0	0	6	13	
28	0	0	10	17	0	0	0	0	0	0	0	0	
29	0	0	0	2	0	0	0	0	0	0	0	0	
30	0	0	0	0	0	0	0	0	0	0	17	0	
31	33	0	3	0	0	0	0	0	0	0	0	28	
Jml	0,0	0,0	0,0	0,0	0,0	0,0	0,0	0,0	0,0	0,0	0,0	0,0	
Jml 1	72,0	381,0	192,0	120,0	45,0	0,0	0,0	0,0	0,0	0,0	40,0	139,0	
Jml 2	166,0	359,0	96,0	89,0	0,0	0,0	0,0	0,0	0,0	0,0	83,5	152,0	
Rata2	0,0	0,0	-	0,0	0,0	#DIV/0!	#####	#####	0,0	0,0	0,0	0,0	
Max	43,0	300,0	46,0	35,0	20,0	0,0	0,0	0,0	0,0	0,0	39,0	62,0	
Min	0,0	0,0	0,0	0,0	0,0	0,0	0,0	0,0	0,0	0,0	0,0	0,0	
Jhh1	2,0	9,0	10,0	7,0	5,0	0,0	0,0	0,0	0,0	0,0	5,0	9,0	
Jhh2	6,0	5,0	8,0	5,0	0,0	0,0	0,0	0,0	0,0	0,0	6,0	12,0	
JH.T=	0 mm		Max. T=		300,0 mm		Min. T=		0 mm		Jhh. T=		42,0 hh

## Lampiran 10 Data Curah Hujan Stasiun Bareng Tahun 2016

Tgl	Jan	Feb	Mar	Apr	Mei	Jun	Jul	Agt	Sep	Okt	Nop	Des		
1	7	0	50	0	0	0	0	0	0	4	0	28		
2	0	5	7	0	0	10	0	0	0	9	0	23		
3	46	28	5	0	0	0	0	0	4	20	0	0		
4	0	0	36	0	0	0	0	0	56	0	0	0		
5	0	10	0	0	0	0	0	0	0	0	10	0		
6	30	0	4	1	0	0	0	0	0	0	0	36		
7	0	79	42	0	0	0	0	0	0	0	0	2		
8	0	1	3	0	0	0	0	5	1	0	0	8		
9	4	12	0	0	14	0	0	0	0	11	17	7		
10	9	45	9	0	0	0	0	0	0	61	72	0		
11	8	50	22	0	0	0	0	0	0	6	0	0		
12	0	37	32	0	0	0	0	0	0	0	0	0		
13	0	0	0	4	30	0	0	5	0	0	2	0		
14	0	0	0	14	0	0	0	10	0	0	31	58		
15	0	0	0	53	0	0	0	40	0	0	18	0		
16	0	32	0	0	18	0	18	0	0	0	8	0		
17	8	0	0	0	23	0	0	0	0	0	0	25		
18	0	26	0	59	4	0	0	0	0	0	59	6		
19	37	0	25	7	1	73	2,5	0	0	0	0	11		
20	49	4	0	0	0	0	0	0	0	0	0	27		
21	4	36	60	1	0	0	7	0	0	4	0	5		
22	0	5	44	0	39	0	0	0	0	0	0	0		
23	0	24	4	0	0	0	0	0	0	0	8	0		
24	16	2	2	0	0	10	1,5	0	24	0	25	0		
25	2	8	0	0	0	0	0	0	59	0	18	0		
26	57	19	8	0	0	0	0	0	0	0	92	0		
27	0	35	0	11	0	13	0	0	8	0	48	0		
28	4	19	15	0	0	0	4,5	0	2,5	4	0	0		
29	0	13	3	6	75	52	0	0	0	0	0	0		
30	2	0	42	0	0	4	0	0	0	0	86	5		
31	1	0	12	0	20	0	0	0	0	9	0	9		
Jml	0,0	0,0	0,0	0,0	0,0	0,0	0,0	0,0	0,0	0,0	0,0	0,0		
Jml 1	104,0	267,0	210,0	72,0	44,0	10,0	0,0	60,0	61,0	111,0	150,0	162,0		
Jml 2	180,0	223,0	215,0	84,0	180,0	152,0	33,5	0,0	93,5	17,0	344,0	88,0		
Rata2	0,0	0,0	0,0	0,0	0,0	0,0	0,0	0,0	0,0	0,0	0,0	0,0		
Max	57,0	79,0	60,0	59,0	75,0	73,0	18,0	40,0	59,0	61,0	92,0	58,0		
Min	0,0	0,0	0,0	0,0	0,0	0,0	0,0	0,0	0,0	0,0	0,0	0,0		
Jhh1	6,0	9,0	10,0	4,0	2,0	1,0	0,0	4,0	3,0	6,0	6,0	7,0		
Jhh2	10,0	12,0	10,0	5,0	7,0	5,0	5,0	0,0	4,0	3,0	8,0	7,0		
JH.T=	0 mm		Max. T=		92,0 mm		Min. T=		0 mm		Jhh. T=		76,0 hh	

## Lampiran 11 Data Curah Hujan Stasiun Mojowarno Tahun 2007

Tgl	Jan	Feb	Mar	Apr	Mei	Jun	Jul	Agt	Sep	Okt	Nop	Des	
1	8	44	0	0	0	0	0	0	0	0	55	0	
2	0	0	5	0	0	0	0	0	0	0	0	45	
3	0	20	0	0	0	0	0	0	0	0	0	50	
4	0	0	35	0	0	0	0	0	0	0	35	0	
5	0	8	45	0	0	0	0	0	0	0	0	20	
6	0	12	13	0	15	0	0	0	0	0	0	12	
7	0	0	21	0	0	2	0	0	0	0	0	15	
8	0	22	5	0	0	12	0	0	0	0	0	30	
9	0	0	18	0	1	0	0	0	0	0	0	15	
10	0	0	0	0	0	0	0	0	0	17	0	0	
11	0	20	0	12	0	0	0	0	0	0	0	20	
12	0	2	0	36	0	0	0	0	0	0	0	30	
13	0	0	0	0	0	0	0	0	0	0	0	0	
14	0	0	5	12	0	0	0	0	0	0	0	0	
15	0	5	14	11	0	0	0	0	0	0	0	0	
16	0	0	9	24	0	0	0	0	0	0	0	0	
17	3	20	0	0	0	0	0	0	0	0	0	50	
18	19	45	0	2	0	0	0	0	0	0	0	7	
19	5	5	0	0	0	0	0	0	0	0	0	0	
20	4	66	21	2	0	0	0	11	0	0	0	5	
21	2	2	67	0	7	0	0	0	0	0	0	2	
22	3	2	35	0	0	0	0	0	0	0	0	0	
23	22	0	7	0	0	0	0	0	0	45	0	21	
24	0	0	0	0	0	0	0	0	0	8	0	0	
25	0	0	14	0	0	0	0	0	0	0	0	80	
26	0	8	18	0	0	0	0	0	0	0	11	7	
27	5	2	4	0	0	5	0	0	0	0	0	15	
28	0	0	16	0	0	60	0	0	0	9	45	0	
29	0	0	0	0	0	55	0	0	0	0	5	0	
30	0	0	0	0	0	0	0	0	0	0	0	0	
31	31	0	23	0	0	0	0	0	0	0	0	0	
Jml	0.0	0.0	0.0	0.0	0.0	0.0	0.0	0.0	0.0	0.0	0.0	0.0	
Jml 1	8.0	133.0	161.0	71.0	16.0	14.0	0.0	0.0	0.0	17.0	90.0	237.0	
Jml 2	94.0	150.0	214.0	28.0	7.0	120.0	0.0	11.0	0.0	62.0	61.0	187.0	
Rata2	0.0	0.0	0.0	0.0	0.0	0.0	0.0	0.0	0.0	0.0	0.0	0.0	
Max	31.0	66.0	67.0	36.0	15.0	60.0	0.0	11.0	0.0	45.0	55.0	80.0	
Min	0.0	0.0	0.0	0.0	0.0	0.0	0.0	0.0	0.0	0.0	0.0	0.0	
Jhh1	1.0	8.0	9.0	4.0	2.0	2.0	0.0	0.0	0.0	1.0	2.0	9.0	
Jhh2	9.0	8.0	10.0	3.0	1.0	3.0	0.0	1.0	0.0	3.0	3.0	8.0	
JH.T=	0 mm		Max. T=			80.0 mm		Min. T=		0 mm		Jhh. T=	49.0 /hh

## Lampiran 12 Data Curah Hujan Stasiun Mojowarno Tahun 2008

Tgl	Jan	Feb	Mar	Apr	Mei	Jun	Jul	Agt	Sep	Okt	Nop	Des	
1	36	40	14	0	0	0	0	0	0	0	0	0	
2	0	80	0	0	0	0	0	0	0	0	0	0	
3	70	5	0	0	0	0	0	0	0	0	0	0	
4	10	40	0	0	40	0	0	0	0	0	0	0	
5	0	14	22	0	0	0	0	0	0	0	28	0	
6	33	0	0	8	0	0	0	0	0	0	0	20	
7	68	0	20	0	0	0	0	0	0	0	0	0	
8	0	5	0	0	0	0	0	0	0	9	0	0	
9	0	8	50	20	0	0	0	0	0	0	0	0	
10	0	14	13	0	0	0	0	0	0	0	0	5	
11	0	0	18	0	0	0	0	0	0	0	0	15	
12	0	0	25	0	0	0	0	0	0	0	0	55	
13	0	5	0	0	0	0	0	0	0	0	0	0	
14	15	0	0	0	0	0	0	0	0	0	0	0	
15	20	0	0	0	0	0	0	0	0	0	0	0	
16	0	0	14	0	0	0	0	0	0	0	0	0	
17	0	0	33	0	0	0	0	0	0	0	38	0	
18	0	15	2	0	0	0	0	0	0	0	4	27	
19	0	0	0	0	0	0	0	0	0	0	3	0	
20	0	0	0	0	0	0	0	0	0	0	0	0	
21	0	0	0	35	0	0	0	0	0	0	0	0	
22	0	7	45	10	0	0	0	0	0	0	0	0	
23	0	0	10	35	0	0	0	0	0	12	0	0	
24	0	2	0	0	0	0	0	0	0	13	0	0	
25	0	5	0	0	0	0	0	0	0	50	90	0	
26	0	7	15	0	0	0	0	15	0	0	0	0	
27	0	14	0	0	0	0	0	0	0	0	0	10	
28	33	25	0	0	0	0	0	0	0	0	0	0	
29	4	0	50	0	0	0	0	0	0	0	0	0	
30	32	0	0	0	0	0	0	0	0	7	0	25	
31	1	0	16	0	0	0	0	0	0	0	0	4	
Jml	0.0	0.0	0.0	0.0	0.0	0.0	0.0	0.0	0.0	0.0	0.0	0.0	
Jml 1	252.0	211.0	162.0	28.0	40.0	0.0	0.0	0.0	0.0	9.0	28.0	95.0	
Jml 2	70.0	75.0	185.0	80.0	0.0	0.0	0.0	15.0	0.0	82.0	135.0	66.0	
Rata2	0.0	0.0	0.0	0.0	0.0	#####	#####	0.0	0.0	0.0	0.0	0.0	
Max	70.0	80.0	50.0	35.0	40.0	0.0	0.0	15.0	0.0	50.0	90.0	55.0	
Min	0.0	0.0	0.0	0.0	0.0	0.0	0.0	0.0	0.0	0.0	0.0	0.0	
Jhh1	7.0	9.0	7.0	2.0	1.0	0.0	0.0	0.0	0.0	1.0	1.0	4.0	
Jhh2	4.0	7.0	8.0	3.0	0.0	0.0	0.0	1.0	0.0	4.0	4.0	4.0	
JH.T=	0 mm		Max. T=			90.0 mm		Min. T=		0 mm		Jhh. T=	35.0 /hh

### Lampiran 13 Data Curah Hujan Stasiun Mojowarno Tahun 2009

Tgl	Jan	Feb	Mar	Apr	Mei	Jun	Jul	Agt	Sep	Okt	Nop	Des
1	0	54	0	48	0	0	0	0	0	0	0	0
2	0	12	27	0	0	86	0	0	0	0	0	0
3	0	0	34	0	0	0	0	0	0	0	0	0
4	0	51	103	0	0	0	0	0	0	0	0	0
5	30	16	40	0	0	0	0	0	0	0	0	0
6	0	0	0	0	0	0	0	0	0	0	0	0
7	0	0	40	0	0	0	0	0	0	0	0	0
8	18	29	0	0	0	0	0	0	0	0	0	0
9	39	16	0	0	15	0	0	0	0	0	0	0
10	10	0	0	0		0	0	0	0	0	0	0
11	0	0	0	0	0	0	0	0	0	0	0	0
12	2	0	0	0	25	0	0	0	0	0	0	0
13	8	0	0	0	0	0	0	0	0	0	25	0
14	15	0	0	29	0	0	0	0	0	0	0	0
15	0	27	0	0	0	0	0	0	0	0	13	0
16	48	0	0	0	0	0	0	0	0	0	0	0
17	0	0	22	0	39	0	0	0	0	0	50	0
18	4	0	0	0	8	0	0	0	0	0	38	0
19	27	0	0	62	2	0	0	0	0	0	18	0
20	2	0	0	0	30	0	0	0	0	0	0	0
21	0	45	0	15	14	0	0	0	0	0	6	0
22	0	4	40	0	0	0	0	0	0	0	0	0
23	0	0	0	0	0	0	0	0	0	0	0	0
24	18	60	0	0	0	0	0	0	0	0	0	0
25	125	93	0	0	0	0	0	0	0	0	10	0
26	0	60	0	0	15	0	0	0	0	0	0	39
27	42	45	0	0	0	0	0	0	0	0	0	0
28	37	0	0	0	0	0	0	0	0	0	55	5
29	0	0	0	0	0	0	0	0	0	0	0	0
30	34	0	0	0	0	0	0	0	0	0	0	7
31	60	0	0	0	0	0	0	0	0	0	0	0
Jml	0.0	0.0	0.0	0.0	0.0	0.0	0.0	0.0	0.0	0.0	0.0	0.0
Jml 1	122.0	205.0	244.0	77.0	40.0	86.0	0.0	0.0	0.0	0.0	38.0	0.0
Jml 2	397.0	307.0	62.0	77.0	108.0	0.0	0.0	0.0	0.0	0.0	177.0	51.0
Rata2	0.0	0.0	0.0	0.0	0	0.0	0.0	0.0	0.0	0.0	0.0	0.0
Max	125.0	93.0	103.0	62.0	39.0	86.0	0.0	0.0	0.0	0.0	55.0	39.0
Min	0.0	0.0	0.0	0.0	0.0	0.0	0.0	0.0	0.0	0.0	0.0	0.0
Jhh1	7.0	7.0	5.0	2.0	2.0	1.0	0.0	0.0	0.0	0.0	2.0	0.0
Jhh2	10.0	6.0	2.0	2.0	6.0	0.0	0.0	0.0	0.0	0.0	6.0	3.0
JH.T=	0 mm		Max. T=		125.0 mm		Min. T=		0 mm		Jhh. T= 35.0 /hh	

## Lampiran 14 Data Curah Hujan Stasiun Mojowarno Tahun 2010

Tgl	Jan	Feb	Mar	Apr	Mei	Jun	Jul	Agt	Sep	Okt	Nop	Des	
1	0	0	42	0	0	0	0	0	0	0	0	0	
2	0	4	0	0	0	0	0	0	0	0	43	43	
3	0	0	25	0	0	0	0	0	0	0	0	6	
4	0	15	0	38	15	0	0	0	0	0	0	0	
5	0	6	40	22	65	0	0	0	0	0	30	0	
6	18	70	0	13	0	0	0	0	0	0	2	31	
7	3	25	10	16	0	3	0	0	21	15	60	40	
8	0	0	0	0	0	0	0	0	0	0	0	60	
9	0	25	0	8	0	0	0	0	0	0	15	20	
10	91	4	0	25	20	0	0	0	0	0	3	11	
11	4	0	7	0	0	0	0	0	0	0	4	7	
12	3	0	0	12	0	0	0	0	28	0	0	0	
13	11	0	0	0	0	0	0	0	0	0	0	18	
14	0	0	0	40	0	0	0	0	0	0	0	0	
15	0	35	0	7	4	24	0	0	0	92	0	0	
16	0	0	0	0	25	31	0	0	0	0	0	0	
17	0	14	60	0	15	3	0	0	33	0	0	0	
18	0	0	27	0	0	0	0	0	0	0	11	21	
19	7	35	0	25	0	0	0	0	0	14	0	29	
20	70	15	0	0	0	0	0	0	0	0	0	0	
21	4	25	0	0	0	0	0	9	15	0	4	0	
22	0	25	0	0	0	0	0	35	0	0	0	0	
23	0	27	0	0	0	0	0	0	5	0	18	93	
24	27	0	0	40	6	0	0	0	0	0	0	9	
25	23	2	19	0	2	0	0	0	0	8	0	0	
26	4	38	0	15	9		28	0	0	0	0	0	
27	45	30	0	0	65	0	0	0	12	0	13	0	
28	4	0	0	83	0	0	21	0	0	0	0	0	
29	10	0	0	4	33	0	0	0	0	0	10	0	
30	0	0	21	0	0	0	0	0	0	29	15	0	
31	0	0	53	0	0	0	0	0	0	31	13	0	
Jml	0.0	0.0	0.0	0.0	0.0	0.0	0.0	0.0	0.0	0.0	0.0	0.0	
Jml 1	130.0	184.0	124.0	181.0	104.0	27.0	0.0	0.0	49.0	107.0	157.0	236.0	
Jml 2	194.0	211.0	180.0	167.0	155.0	34.0	49.0	35.0	59.0	97.0	80.0	156.0	
Rata2	0.0	0.0	0.0	0.0	0.0	0.0	0.0	0.0	0.0	0.0	0.0	0.0	
Max	91.0	70.0	60.0	83.0	65.0	31.0	28.0	35.0	33.0	92.0	60.0	93.0	
Min	0.0	0.0	0.0	0.0	0.0	0.0	0.0	0.0	0.0	0.0	0.0	0.0	
Jhh1	6.0	8.0	5.0	9.0	4.0	2.0	0.0	0.0	2.0	2.0	7.0	9.0	
Jhh2	9.0	9.0	5.0	5.0	7.0	2.0	2.0	1.0	4.0	5.0	6.0	5.0	
JH.T=	0 mm		Max. T=			93.0 mm		Min. T=		0 mm		Jhh. T= 60.0 /hh	

## Lampiran 15 Data Curah Hujan Stasiun Mojowarno Tahun 2011

Tgl	Jan	Feb	Mar	Apr	Mei	Jun	Jul	Agt	Sep	Okt	Nop	Des
1	0	8	41	0	20	27	0	0	0	0	0	0
2	11	21	20	0	75	0	0	0	0	0	0	0
3	25	7	0	38	0	0	0	0	0	0	32	0
4	25	4	0	3	0	0	0	0	0	0	23	0
5	8	0	9	0	0	0	0	0	0	0	13	0
6	0	0	20	0	59	0	0	0	0	0	0	45
7	0	0	0	0	28	0	0	0	0	0	0	4
8	35	0	3	18	0	0	0	0	0	0	18	0
9	0	0	3	0	7	0	0	0	0	0	43	0
10	0	48	16	17	0	0	0	0	0	0	13	0
11	4	0	0	5	0	0	0	0	0	0	0	0
12	0	0	0	0	0	0	0	0	0	0	0	0
13	0	0	0	0	0	0	0	0	0	0	0	73
14	0	0	0	0	0	0	4	0	0	0	0	0
15	0	19	0	0	0	0	0	0	0	0	0	5
16	0	15	0	0	0	0	19	0	0	0	0	2
17	0	14	0	0	0	0	0	0	0	0	0	0
18	8	0	27	0	0	0	0	0	37	0	5	0
19	21	0	0	0	0	0	0	0	0	0	0	0
20	0	0	0	0	47	0	0	0	0	0	0	30
21	4	0	17	0	0	0	0	0	0	29	0	52
22	46	0	0	0	0	0	0	0	0	0	0	5
23	0	10	4	0	0	0	0	0	0	0	4	0
24	70	25	21	0	0	0	0	0	0	0	0	0
25	0	2	13	0	0	0	0	0	0	0	6	0
26	30	5	30	0	0	0	0	0	0	0	0	85
27	33	0	0	0	0	0	0	0	0	0	12	25
28	22	15	36	0	18	35	0	0	0	2	17	0
29	34	0	60	0	0	0	0	0	0	0	0	0
30	0	0	8	0	0	0	0	0	0	0	0	0
31	0	0	6	0	0	0	0	0	0	0	0	0
Jml	0.0	0.0	0.0	0.0	0.0	0.0	0.0	0.0	0.0	0.0	0.0	0.0
Jml 1	108.0	107.0	112.0	81.0	189.0	27.0	4.0	0.0	0.0	0.0	142.0	127.0
Jml 2	268.0	86.0	222.0	0.0	65.0	35.0	19.0	0.0	37.0	31.0	44.0	199.0
Rata2	0.0	0.0	0.0	0.0	0.0	0.0	0.0	0.0	0.0	0.0	0.0	0.0
Max	70.0	48.0	60.0	38.0	75.0	35.0	19.0	0.0	37.0	29.0	43.0	85.0
Min	0.0	0.0	0.0	0.0	0.0	0.0	0.0	0.0	0.0	0.0	0.0	0.0
Jhh1	6.0	6.0	7.0	5.0	5.0	1.0	1.0	0.0	0.0	0.0	6.0	4.0
Jhh2	9.0	7.0	10.0	0.0	2.0	1.0	1.0	0.0	1.0	2.0	5.0	6.0
JH.T=	0 mm		Max. T=		85.0 mm		Min. T=		0 mm		Jhh. T= 44.0 /hh	

## Lampiran 16 Data Curah Hujan Stasiun Mojowarno Tahun 2012

Tgl	Jan	Feb	Mar	Apr	Mei	Jun	Jul	Agt	Sep	Okt	Nop	Des	
1	0	5	0	0	0	0	0	0	0	0	0	0	
2	15	0	22	35	0	0	0	0	0	0	0	0	
3	0	7	0	6	25	0	0	0	0	0	0	0	
4	0	30	0	36	7	0	0	0	0	0	0	0	
5	0	50	0	8	0	0	0	0	0	0	0	0	
6	0	0	8	15	0	0	0	0	0	0	0	0	
7	80	0	26	15	0	0	0	0	0	0	0	0	
8	0	0	0	0	0	0	0	0	0	0	0	0	
9	0	0	0	0	8	0	0	0	0	0	0	0	
10	68	0	8	0	0	0	0	0	0	0	0	0	
11	10	0	12	0	0	5	0	0	0	0	0	0	
12	9	0	35	0	0	0	0	0	0	0	0	0	
13	0	0	0	0	0	0	0	0	0	0	0	0	
14	20	0	8	0	0	0	0	0	0	0	0	0	
15	46	0	7	0	0	0	0	0	0	0	0	0	
16	42	0	0	0	0	0	0	0	0	0	0	0	
17	35	38	0	0	0	0	0	0	0	0	0	0	
18	0	0	0	8	0	0	0	0	0	0	0	0	
19	0	0	7	0	0	0	0	0	0	0	0	0	
20	30	73	0	0	0	0	0	0	0	0	0	0	
21	10	33	0	0	0	13	0	0	0	0	0	0	
22	0	0	0	0	0	0	0	0	0	0	0	0	
23	0	0	0	0	0	0	0	0	0	0	0	0	
24	20	0	0	0	0	0	0	0	0	0	0	0	
25	0	3	0	0	0	0	0	0	0	0	0	0	
26	0	0	0	0	0	0	0	0	0	0	0	0	
27	5	0	0	0	0	0	0	0	0	0	0	0	
28	0	0	0	0	0	0	0	0	0	0	0	0	
29	0	0	0	0	0	0	0	0	0	0	0	0	
30	30	0	0	0	0	0	0	0	0	0	0	0	
31	0	0	25	0	0	0	0	0	0	0	0	0	
Jml	0.0	0.0	0.0	0.0	0.0	0.0	0.0	0.0	0.0	0.0	0.0	0.0	
Jml 1	248.0	92.0	126.0	115.0	40.0	5.0	0.0	0.0	0.0	0.0	0.0	0.0	
Jml 2	172.0	147.0	32.0	8.0	0.0	13.0	0.0	0.0	0.0	0.0	0.0	0.0	
Rata2	0.0	0.0	0.0	0.0	0.0	0.0	#####	#####	0.0	#####	#####	#####	
Max	80.0	73.0	35.0	36.0	25.0	13.0	0.0	0.0	0.0	0.0	0.0	0.0	
Min	0.0	0.0	0.0	0.0	0.0	0.0	0.0	0.0	0.0	0.0	0.0	0.0	
Jhh1	7.0	4.0	8.0	6.0	3.0	1.0	0.0	0.0	0.0	0.0	0.0	0.0	
Jhh2	7.0	4.0	2.0	1.0	0.0	1.0	0.0	0.0	0.0	0.0	0.0	0.0	
JH.T=	0 mm		Max. T=			80.0 mm		Min. T=		0 mm		Jhh. T=	15.0 /hh



## Lampiran 17 Data Curah Hujan Stasiun Mojowarno Tahun 2013

Tgl	Jan	Feb	Mar	Apr	Mei	Jun	Jul	Agt	Sep	Okt	Nop	Des	
1	0	0	0	0	0	0	0	0	0	0	0	0	
2	0	0	0	0	0	0	0	0	0	0	0	0	
3	0	0	0	0	0	0	0	0	0	0	0	0	
4	30	0	0	0	0	0	0	0	0	0	13	10	
5	4	0	0	0	0	0	0	0	0	0	18	18	
6	0	25	0	0	0	0	0	0	0	0	10	26	
7	0	17	0	0	0	0	0	0	0	0	25	0	
8	0	0	0	0	27	0	0	0	0	0	0	0	
9	0	0	16	0	0	0	0	0	0	0	0	0	
10	8	0	0	0	0	0	0	0	0	0	0	0	
11	20	0	0	8	0	0	0	0	0	0	0	0	
12	0	0	0	0	0	0	0	0	0	0	0	33	
13	0	0	5	0	8	0	0	0	0	0	6	23	
14	0	0	0	0	10	0	0	0	0	0	0	0	
15	0	0	10	0	0	0	0	0	0	0	35	0	
16	15	0	14	0	0	0	0	0	0	0	20	0	
17	0	0	0	0	0	0	0	0	0	0	14	0	
18	0	0	0	0	0	15	0	0	0	0	0	0	
19	0	0	0	0	0	0	0	0	0	0	0	13	
20	0	0	0	0	0	0	0	0	0	0	0	11	
21	3	11	0	3	0	0	0	0	0	0	0	0	
22	0	19	0	0	0	0	0	0	0	0	0	0	
23	0	0	0	0	0	0	0	0	0	0	0	0	
24	0	0	0	2	5	0	0	0	0	0	13	0	
25	0	40	0	0	0	0	0	0	0	0	0	22	
26	0	0	5	0	0	0	0	0	0	0	0	8	
27	9	0	8	0	0	0	0	0	0	0	0	28	
28	0	0	0	0	0	0	0	0	0	0	17	0	
29	0	0	0	0	0	0	0	0	0	0	14	0	
30	25	0	0	0	0	0	0	0	0	0	0	0	
31	0	0	0	0	0	0	0	0	0	0	0	0	
Jml	0.0	0.0	0.0	0.0	0.0	0.0	0.0	0.0	0.0	0.0	0.0	0.0	
Jml 1	62.0	42.0	31.0	8.0	45.0	0.0	0.0	0.0	0.0	0.0	107.0	110.0	
Jml 2	52.0	70.0	27.0	5.0	5.0	15.0	0.0	0.0	0.0	0.0	78.0	82.0	
Rata2	0.0	0.0	0.0	0.0	0.0	0.0	0.0	0.0	0.0	####	0.0	0.0	
Max	30.0	40.0	16.0	8.0	27.0	15.0	0.0	0.0	0.0	0.0	35.0	33.0	
Min	0.0	0.0	0.0	0.0	0.0	0.0	0.0	0.0	0.0	0.0	0.0	0.0	
Jhh1	4.0	2.0	3.0	1.0	3.0	0.0	0.0	0.0	0.0	0.0	6.0	5.0	
Jhh2	4.0	3.0	3.0	2.0	1.0	1.0	0.0	0.0	0.0	0.0	5.0	5.0	
JH.T=	0 mm		Max. T=		40.0 mm		Min. T=		0 mm		Jhh. T=		24.0 /hh

## Lampiran 18 Data Curah Hujan Stasiun Mojowarno Tahun 2014

Tgl	Jan	Feb	Mar	Apr	Mei	Jun	Jul	Agt	Sep	Okt	Nop	Des	
1	0	0	0	0	0	0	0	0	0	0	0	0	
2	0	0	0	0	0	0	0	0	0	0	0	0	
3	0	25		23	0	0	0	0	0	0	0	0	
4	0	11	10	0	0	0	0	0	0	0	0	0	
5	0	0	16	0	0	0	0	0	0	0	8	31	
6	36	0	19	0	18	0	0	0	0	0	10	27	
7	24	23	0	0	15	0	0	0	0	0	0	20	
8	0	0	0	0	0	0	0	0	0	0	0	0	
9	0	0	0	16	0	0	0	0	0	0	0	0	
10	0	0	26	15	0	0	0	0	0	0	0	18	
11	0	0	0	0	0	0	0	0	0	0	0	16	
12	0	0	0	0	0	0	0	0	0	0	21	0	
13	0	0	17	0	13	0	0	0	0	0	0	0	
14	0	0	0	0	0	0	0	0	0	0	13	23	
15	0	0	0	32	0	0	0	0	0	0	0	24	
16	0	12	0	24	18	0	0	0	0	10	0	0	
17	0	13	0	0	0	0	0	0	0	0	0	0	
18	0	20	0	0	0	0	0	0	0	0	0	0	
19	0	0	33	0	0	0	0	0	0	0	0	13	
20	0	0	0	0	0	0	0	0	0	0	16	0	
21	0	0	0	31	0	0	0	0	0	0	0	0	
22	18	24	23	0	0	0	0	0	0	0	0	17	
23	35	12	13	0	8	0	0	0	0	0	0	0	
24	25	0	0	0	18	0	0	0	0	0	0	0	
25	0	0	0	0	0	0	0	0	0	0	0	6	
26	0	0	0	0	0	0	0	0	0	0	0	9	
27	0	0	10	0	0	0	0	0	0	8	0	0	
28	6	0	0	0	0	0	0	0	0	0	0	0	
29	0	0	0	18	0	0	0	0	0	0	0	0	
30	0	0	0	0	23	0	0	0	0	0	0	0	
31	0	0	0	0	0	0	0	0	0	0	25	21	
Jml	0.0	0.0	0.0	0.0	0.0	0.0	0.0	0.0	0.0	0.0	0.0	0.0	
Jml 1	60.0	59.0	88.0	86.0	46.0	0.0	0.0	0.0	0.0	0.0	52.0	159.0	
Jml 2	84.0	81.0	79.0	73.0	67.0	0.0	0.0	0.0	0.0	18.0	41.0	66.0	
Rata2	0.0	0.0	-	0.0	0.0	#####	0.0	#####	#####	0.0	0.0	0.0	
Max	36.0	25.0	33.0	32.0	23.0	0.0	0.0	0.0	0.0	10.0	25.0	31.0	
Min	0.0	0.0	0.0	0.0	0.0	0.0	0.0	0.0	0.0	0.0	0.0	0.0	
Jhh1	2.0	3.0	5.0	4.0	3.0	0.0	0.0	0.0	0.0	0.0	4.0	7.0	
Jhh2	4.0	5.0	4.0	3.0	4.0	0.0	0.0	0.0	0.0	2.0	2.0	5.0	
JH.T=	0 mm		Max. T=			36.0 mm		Min. T=		0 mm		Jhh. T= 29.0 /hh	

## Lampiran 19 Data Curah Hujan Stasiun Mojowarno Tahun 2015

Tgl	Jan	Feb	Mar	Apr	Mei	Jun	Jul	Agt	Sep	Okt	Nop	Des
1	0	5	0	0	0	0	0	0	0	0	0	0
2	0	13	6	0	14	0	0	0	0	0	0	0
3	0	21	27	0	8	0	0	0	0	0	0	3
4	9	0	37	7	0	0	0	0	0	0	0	1
5	0	24	4	0	50	0	0	0	0	0	0	15
6	0	2	52	0	0	0	0	0	0	0	0	0
7	0	55	5	20	0	0	0	0	0	0	0	11
8	0	0	2	9	0	0	0	0	0	0	0	1
9	0	0	11	0	0	0	0	0	0	0	0	6
10	0	42	0	2	0	0	0	0	0	0	0	1
11	0	5	8	0	0	0	0	0	0	0	4	32
12	0	29	22	17	0	0	0	0	0	0	0	1
13	22	70	4	45	0	0	0	0	0	0	0	3
14	48	6	0	20	9	0	0	0	0	0	0	1
15	2	21	21	8	19	0	0	0	0	0	0	57
16	0	0	3	0	0	0	0	0	0	0	0	36
17	22	0	0	0	0	0	0	0	0	0	0	37
18	17	11	3	0	0	0	0	0	0	0	0	29
19	23	14	22	32	0	0	0	0	0	43	0	2
20	16	115	0	1	0	0	0	0	0	0	0	6
21	0	0	14	35	0	0	0	0	0	0	0	1
22	10	0	6	5	0	0	0	0	0	0	0	15
23	8	0	50	0	0	0	0	0	0	0	0	1
24	10	14	11	36	0	0	0	0	0	0	0	10
25	8	10	0	0	0	0	0	0	0	0	2	6
26	0	47	0	2	0	0	0	0	0	0	20	1
27	0	12	0	0	0	0	0	0	0	0	22	0
28	0	11	0	16	0	9	0	0	0	0	0	0
29	0	0	35	0	0	0	0	0	0	0	0	0
30	45	0	0	0	0	0	0	0	0	0	0	0
31	77	0	0	0	0	0	0	0	0	0	0	0
Jml	0.0	0.0	0.0	0.0	0.0	0.0	0.0	0.0	0.0	0.0	0.0	0.0
Jml 1	81.0	293.0	199.0	128.0	100.0	0.0	0.0	0.0	0.0	0.0	4.0	132.0
Jml 2	236.0	234.0	144.0	127.0	0.0	9.0	0.0	0.0	0.0	43.0	44.0	144.0
Rata2	0.0	0.0	-	0.0	0.0	0.0	0.0	0.0	0.0	0.0	0.0	0.0
Max	77.0	115.0	52.0	45.0	50.0	9.0	0.0	0.0	0.0	43.0	22.0	57.0
Min	0.0	0.0	0.0	0.0	0.0	0.0	0.0	0.0	0.0	0.0	0.0	0.0
Jhh1	4.0	12.0	12.0	8.0	5.0	0.0	0.0	0.0	0.0	0.0	1.0	12.0
Jhh2	10.0	8.0	8.0	7.0	0.0	1.0	0.0	0.0	0.0	1.0	3.0	11.0
JH.T=	0 mm		Max. T= 115.0 mm			Min. T=		0 mm		Jhh. T= 49.0 /hh		

## Lampiran 20 Data Curah Hujan Stasiun Mojowarno Tahun 2016

Tgl	Jan	Feb	Mar	Apr	Mei	Jun	Jul	Agt	Sep	Okt	Nop	Des	
1	13	4	25	2	0	0	0	0	0	17	0	32	
2	0	2	19	0	0	0	0	8	0	4	0	31	
3	74	30	15	0	0	0	43	0	0	14	0	1	
4	2	0	11	4	0	0	0	0	100	0	0	10	
5	0	3	0	0	0	0	0	0	0	0	0	0	
6	1	91	1	0	13	0	0	0	0	0	0	34	
7	0	63	121	0	30	0	0	0	0	0	0	1	
8	35	1	0	0	0	0	0	0	5	0	0	0	
9	1	40	0	2	2	0	0	0	0	17	20	18	
10	1	64	1	5	0	0	0	0	0	18	10	0	
11	19	68	38	0	0	0	11	0	0	7	4	0	
12	0	39	54	1	0	0	0	0	0	0	4	0	
13	0	1	1	25	1	0	0	29	0	0	4	0	
14	0	1	0	12	0	0	0	20	0	0	50	71	
15	0	0	9	33	1	1	0	45	0	0	30	0	
16	0	95	0	0	4	0	0	0	0	0	6	0	
17	16	2	2	0	79	0	0	0	2	0	1	59	
18	1	8	0	3	0	0	0	0	0	0	2	1	
19	12	0	7	0	0	62	38	0	0	0	0	15	
20	48	0	0	0	0	9	0	0	0	0	0	14	
21	1	1	34	3	0	0	17	0	0	0	0	0	
22	24	3	33		6	0	0	0	0	0	0	0	
23	13	4	29	2	0	0	0	0	0	0	5	0	
24	10	1	19	0	0	4	9	0	31	2	7	3	
25	2	8	0	0	0	6	0	0	3	0	15	0	
26	43	5	82	0	0	0	0	0	0	1	95	0	
27	0	61	0	1	0	4	4	0	104	0	0	0	
28	2	18	4	0	40	48	39	0	6	2	0	0	
29	0	44	1	0		3	4	0	1	3	2	0	
30	1	0	0	0	7	0	0	0	0	22	37	4	
31	13	0	0	0	34	0	10	0	0	0	0	8	
Jml	0.0	0.0	0.0	0.0	0.0	0.0	0.0	0.0	0.0	0.0	0.0	0.0	
Jml 1	146.0	407.0	295.0	84.0	47.0	1.0	54.0	102.0	105.0	77.0	122.0	198.0	
Jml 2	186.0	250.0	211.0	9.0	170.0	136.0	121.0	0.0	147.0	30.0	170.0	104.0	
Rata2	0.0	0.0	0.0	0.0	0.0	0.0	0.0	0.0	0.0	0.0	0.0	0.0	
Max	74.0	95.0	121.0	33.0	79.0	62.0	43.0	45.0	104.0	22.0	95.0	71.0	
Min	0.0	0.0	0.0	0.0	0.0	0.0	0.0	0.0	0.0	0.0	0.0	0.0	
Jhh1	8.0	13.0	11.0	8.0	5.0	1.0	2.0	4.0	2.0	6.0	7.0	8.0	
Jhh2	13.0	12.0	9.0	4.0	6.0	7.0	7.0	0.0	6.0	5.0	9.0	7.0	
JH.T=	0 mm		Max. T=			121.0 mm		Min. T=		0 mm		Jhh. T= 85.0 /hh	

Lampiran 21 Data Debit Debit Sungai Tahun 2012

**DATA DEBIT SUNGAI (m<sup>3</sup>/det)**

**D.I TAWANGSARI**

**TAHUN 2012**

Periode	Jan	Feb	Mar	Apr	Mei	Jun	Jul	Agt	Sep	Okt	Nop	Des
I	0.625	0.75	0.61	0.6	0.612	0.525	0.512	0.423	0.419	0.328	0.421	0.636
II	0.615	0.62	0.63	0.63	0.535	0.514	0.547	0.434	0.437	0.331	0.326	0.653

Sumber : Dinas Pengairan Kabupaten Jombang

Lampiran 22 Data Debit Debit Sungai Tahun 2013

**DATA DEBIT SUNGAI (m<sup>3</sup>/det)**

**D.I TAWANGSARI**

**TAHUN 2013**

Periode	Jan	Feb	Mar	Apr	Mei	Jun	Jul	Agt	Sep	Okt	Nop	Des
I	0.705	0.71	0.612	0.655	0.623	0.665	0.613	0.695	0.213	0.326	0.223	0.625
II	0.719	0.732	0.632	0.676	0.62	0.615	0.615	0.625	0.276	0.326	0.226	0.653

Sumber : Dinas Pengairan Kabupaten Jombang

Lampiran 23 Data Debit Debit Sungai Tahun 2014

**DATA DEBIT SUNGAI (m<sup>3</sup>/det)**

**D.I TAWANGSARI**

**TAHUN 2014**

Periode	Jan	Feb	Mar	Apr	Mei	Jun	Jul	Agt	Sep	Okt	Nop	Des
I	0.605	0.628	0.744	0.635	0.631	0.565	0.162	0.162	0.339	0.309	0.339	0.566
II	0.668	0.668	0.711	0.652	0.683	0.511	0.173	0.273	0.339	0.309	0.339	0.648

Sumber : Dinas Pengairan Kabupaten Jombang

Lampiran 24 Data Debit Debit Sungai Tahun 2015

**DATA DEBIT SUNGAI (m<sup>3</sup>/det)**

**D.I SELOWONGKO**

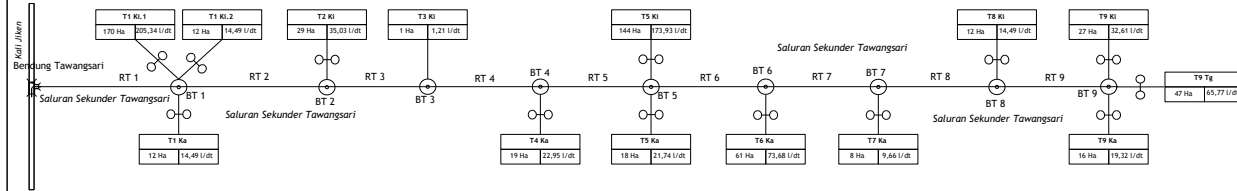
**TAHUN 2015**

Periode	Jan	Feb	Mar	Apr	Mei	Jun	Jul	Agt	Sep	Okt	Nop	Des
I	0.635	0.635	0.735	0.531	0.645	0.645	0.645	0.645	0.745	0.673	0.673	0.715
II	0.615	0.635	0.735	0.619	0.612	0.612	0.612	0.612	0.712	0.648	0.673	0.835

Sumber : Dinas Pengairan Kabupaten Jombang

Lampiran 25 Peta Jaringan Irigasi

## SKEMA JARINGAN D.I. TAWANGSARI BAKU SAWAH 576 Ha



PRODI TEKNIK SIPIL  
FAKULTAS TEKNIK SIPIL  
UNIVERSITAS MUHAMMADIYAH SURABAYA

JUDUL TUGAS AKHIR

ANALISIS KEBUTUHAN AIR IRIGASI PADA  
DAERAH IRIGASI TAWANGSARI, KABUPATEN  
JOMBANG

JUDUL GAMBAR

PETA JARINGAN IRIGASI

OLEH :

SAFIRA RAMADHANI  
NIM : 20161333011

DOSEN PEMBIMBING 1

ANNA ROSYTHA, ST., MT.

DOSEN PEMBIMBING 2

MIFTAHUL HUDA, ST., MT.

LEGENDA :

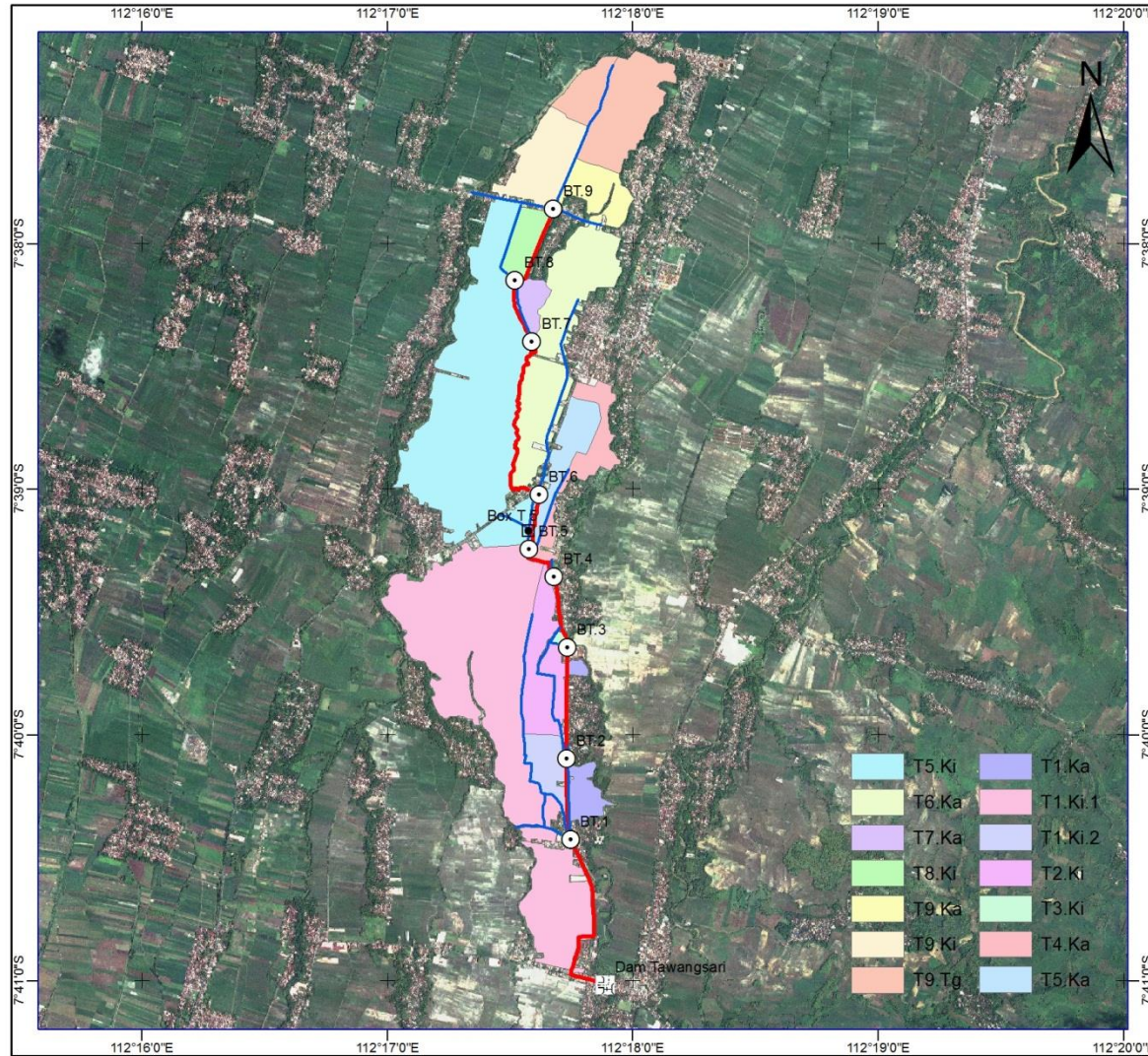
- |   |                     |      |   |
|---|---------------------|------|---|
| ☒ | Sumber              | ———— | Saluran Primer  |
| ☒ | Dam                 | ———— | Saluran Sekunder  |
| ⊙ | Bangunan Bagi       | ———— | Saluran Pembuang  |
| ⊙ | Bangunan Bagi Sadap | ⊙    | N Nama Petak, Tesler<br>A Luas Baku Sawah (Ha)<br>C FPR untuk 10 hari yang lalu<br>(l/dt/kl/Ha.pdf) |
| ⊙ | Bangunan Sadap      | ⊙    |   |

SKALA

1 : 40.000

No.LBR	JML.LBR	TANGGAL
1	1	

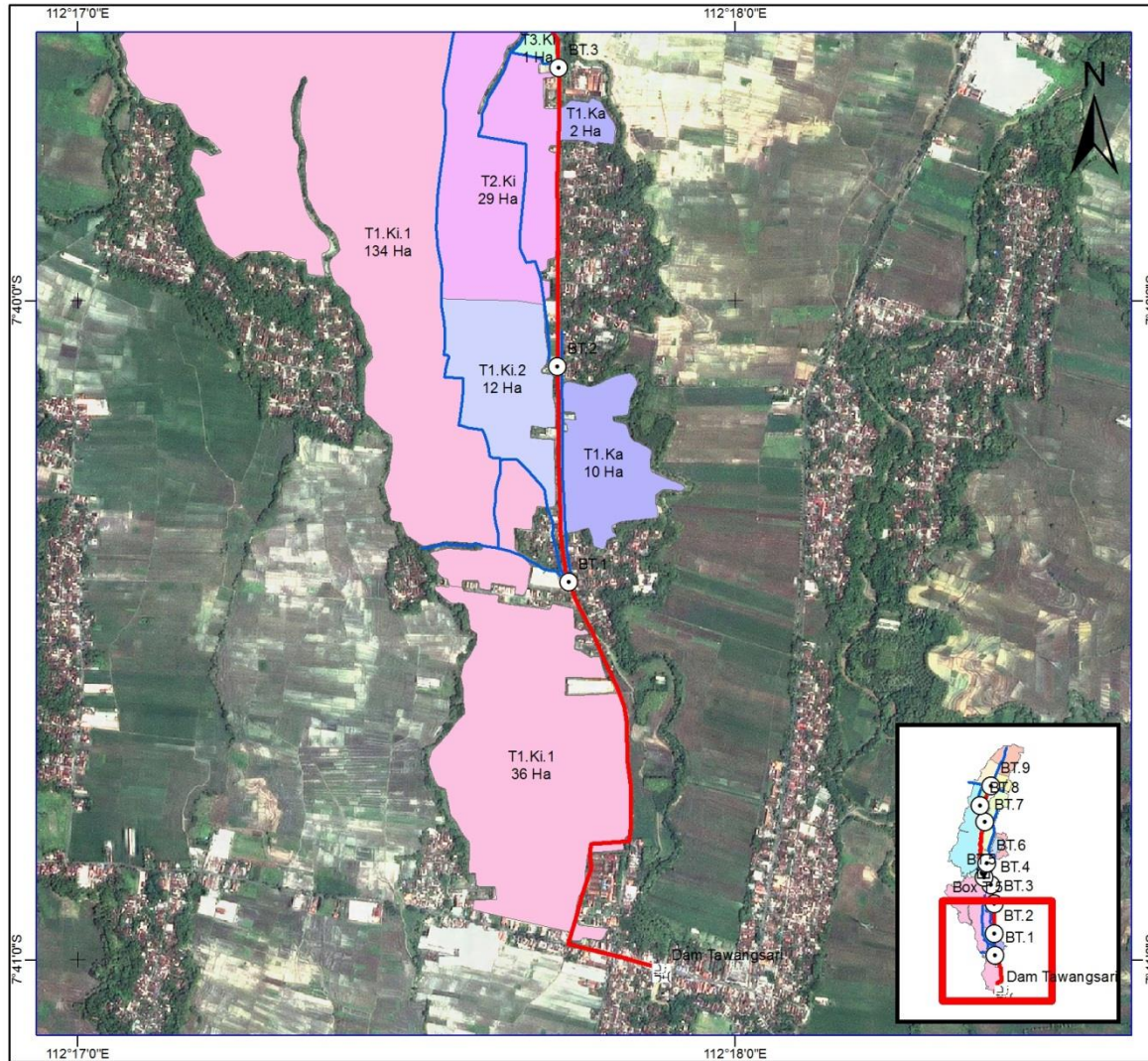
Lampiran 26 Peta Daerah Irigasi











 PRODI TEKNIK SIPIL FAKULTAS TEKNIK UNIVERSITAS MUHAMMADIYAH SURABAYA		
JUDUL TUGAS AKHIR		
ANALISIS KEBUTUHAN AIR IRIGASI PADA DAERAH IRIGASI TAWANGSARI KABUPATEN JOMBANG		
JUDUL GAMBAR		
PETA DAERAH IRIGASI		
OLEH		
SAFIRA RAMADHANI NIM : 20161333011		
DOSEN PEMBIMBING 1		
ANNA ROSYTHA, ST., MT.		
DOSEN PEMBIMBING 2		
MIFTACHUL HUDA, s.pd., M.T		
<b>Legenda :</b>		
<b>Bangunan :</b>		<b>Saluran :</b>
	Bangunan Ukur	 Sekunder
	Bendung	 Tersier
	Box Tersier	
	Sadap	
	Talang	
SKALA		
1:40,000		
No. LBR	JML. LBR	TANGGAL
1	4	

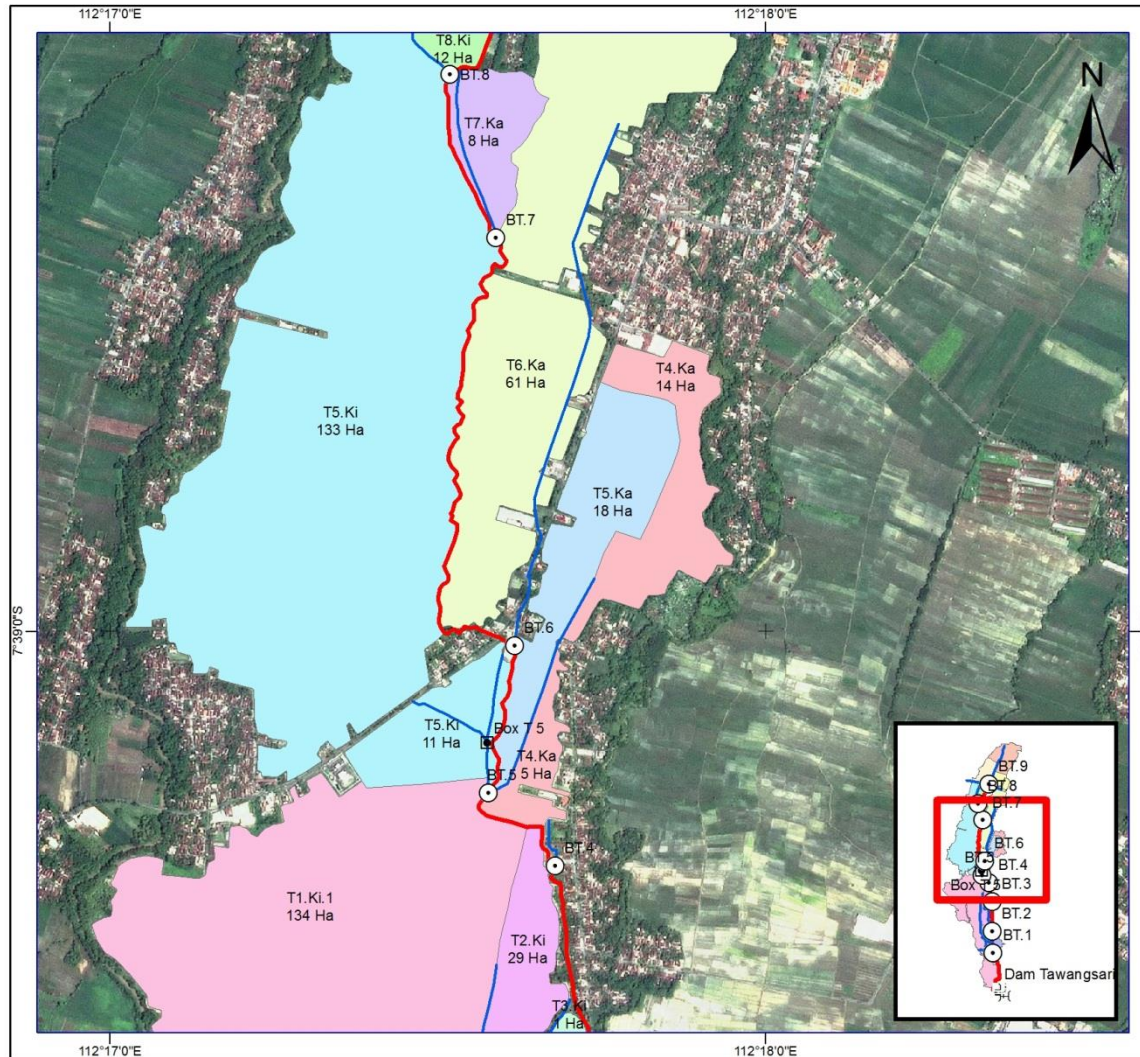


Lampiran 27 Peta Daerah Irigasi



 PRODI TEKNIK SIPIL FAKULTAS TEKNIK UNIVERSITAS MUHAMMADIYAH SURABAYA		
JUDUL TUGAS AKHIR		
ANALISIS KEBUTUHAN AIR IRIGASI PADA DAERAH IRIGASI TAWANGSARI KABUPATEN JOMBANG		
JUDUL GAMBAR		
PETA DAERAH IRIGASI		
OLEH		
SAFIRA RAMADHANI NIM : 20161333011		
DOSEN PEMBIMBING 1		
ANNA ROSYTHA, ST., MT.		
DOSEN PEMBIMBING 2		
MIFTACHUL HUDA, S.Pd., M.T		
<b>Legenda :</b>		
<b>Bangunan :</b>		
	Bangunan Ukur	
	Bendung	
	Box Tersier	
	Sadap	
	Talang	
<b>Saluran :</b>		
	Sekunder	
	Tersier	
SKALA		
1:15,000		
No. LBR	JML. LBR	TANGGAL
2	4	

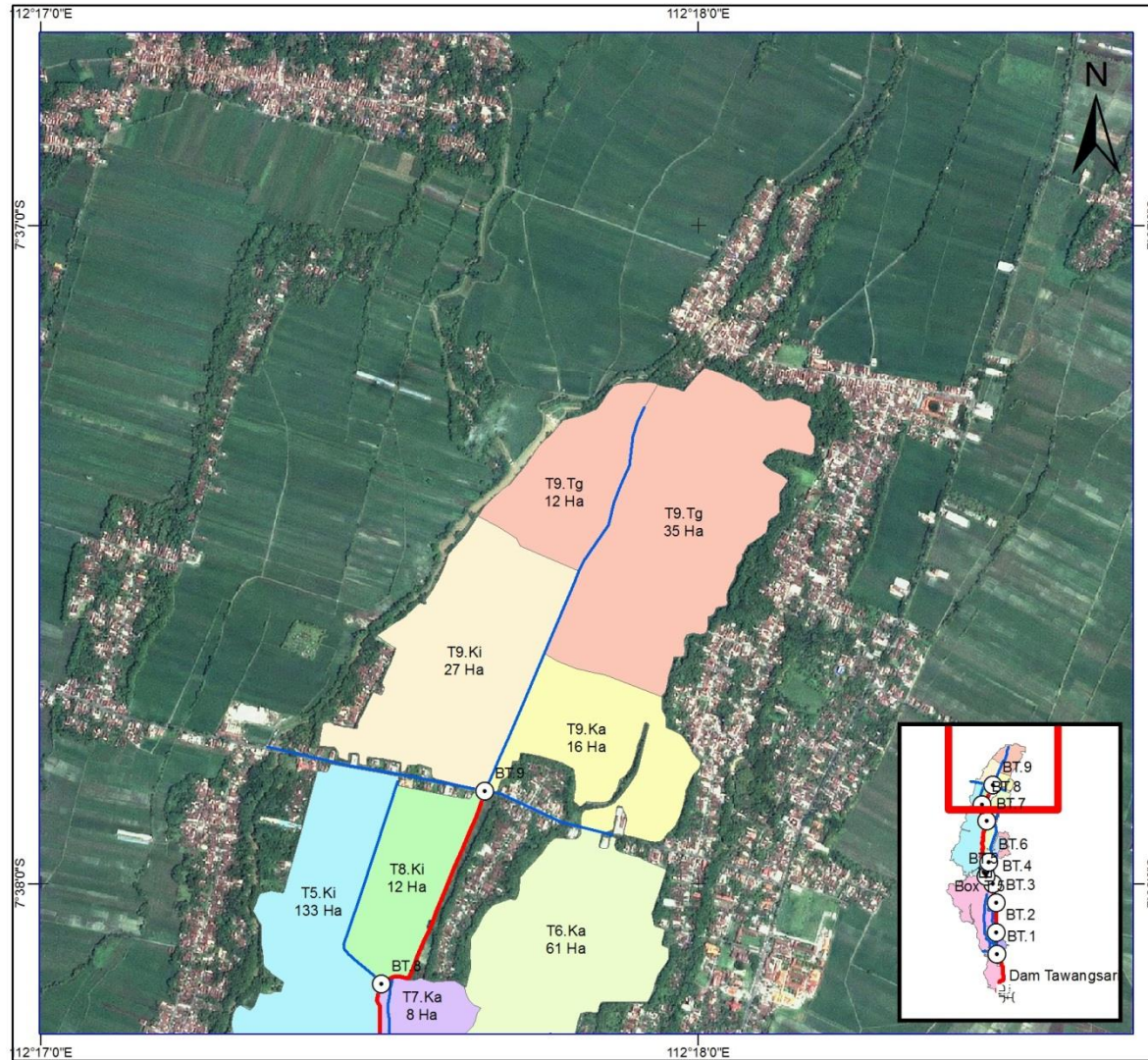
Lampiran 28 Peta Daerah Irigasi



 PRODI TEKNIK SIPIL FAKULTAS TEKNIK UNIVERSITAS MUHAMMADIYAH SURABAYA		
JUDUL TUGAS AKHIR		
ANALISIS KEBUTUHAN AIR IRIGASI PADA DAERAH IRIGASI TAWANGSARI KABUPATEN JOMBANG		
JUDUL GAMBAR		
PETA DAERAH IRIGASI		
OLEH		
SAFIRA RAMADHANI NIM : 20161333011		
DOSEN PEMBIMBING 1		
ANNA ROSYTHA, ST., MT.		
DOSEN PEMBIMBING 2		
MIFTACHUL HUDA, \$Pd.. M.T		
Legenda :		
Bangunan :                      Saluran :  Bangunan Ukur  Sekunder  Bendung  Tersier  Box Tersier  Sadap  Talang		
SKALA		
1:15,000		
No. LBR	JML. LBR	TANGGAL
3	4	

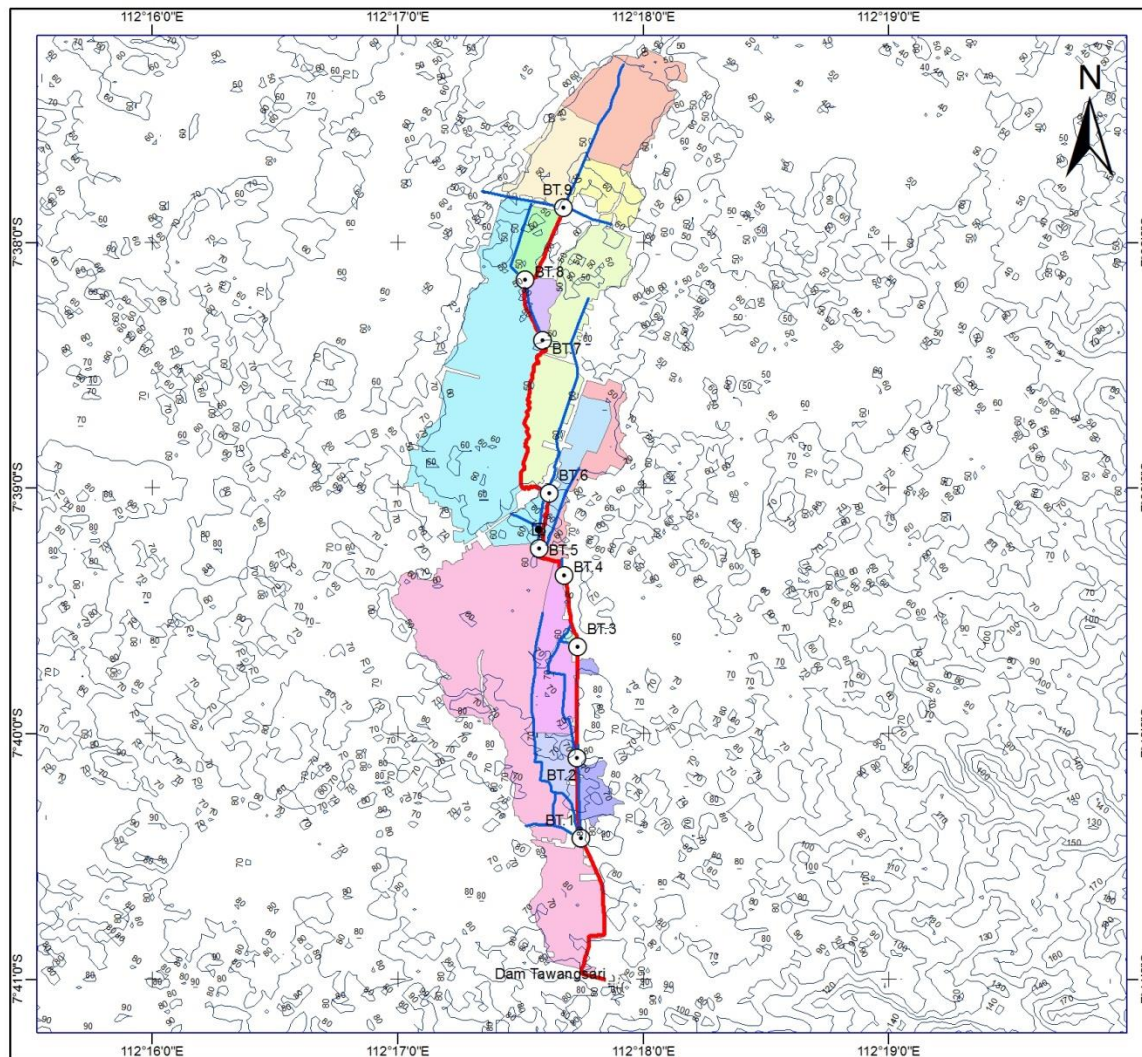


Lampiran 29 Peta Daerah Irigasi



 PRODI TEKNIK SIPIL FAKULTAS TEKNIK UNIVERSITAS MUHAMMADIYAH SURABAYA		
JUDUL TUGAS AKHIR		
ANALISIS KEBUTUHAN AIR IRIGASI PADA DAERAH IRIGASI TAWANGSARI KABUPATEN JOMBANG		
JUDUL GAMBAR		
PETA DAERAH IRIGASI		
OLEH		
SAFIRA RAMADHANI NIM : 20161333011		
DOSEN PEMBIMBING 1		
ANNA ROSYTHA, ST., MT.		
DOSEN PEMBIMBING 2		
MIFTACHUL HUDA, S.Pd., M.T		
<b>Legenda :</b>		
<b>Bangunan :</b>		
	Bangunan Ukur	
	Bendung	
	Box Tersier	
	Sadap	
	Talang	
<b>Saluran :</b>		
	Sekunder	
	Tersier	
SKALA		
1:15,000		
No. LBR	JML. LBR	TANGGAL
4	4	

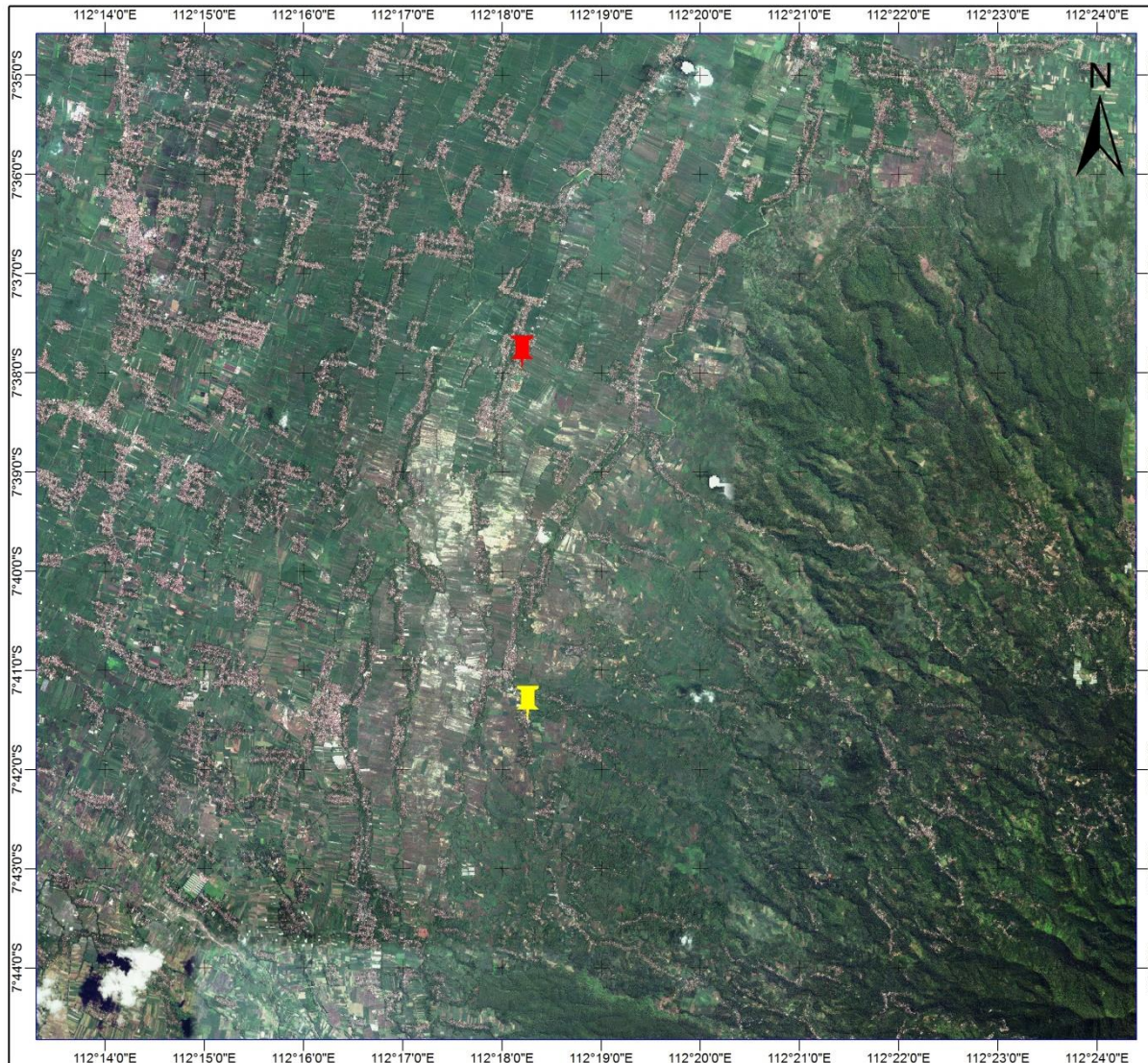
### Lampiran 30 Peta Topografi






 PRODI TEKNIK SIPIL FAKULTAS TEKNIK UNIVERSITAS MUHAMMADIYAH SURABAYA		
JUDUL TUGAS AKHIR		
ANALISIS KEBUTUHAN AIR IRIGASI PADA DAERAH IRIGASI TAWANGSARI KABUPATEN JOMBANG		
JUDUL GAMBAR		
PETA TOPOGRAFI		
OLEH		
SAFIRA RAMADHANI NIM : 20161333011		
DOSEN PEMBIMBING 1		
ANNA ROSYTHA, ST., MT.		
DOSEN PEMBIMBING 2		
MIFTACHUL HUDA, S.Pd., M.T		
<b>Legenda :</b>		
<b>Bangunan :</b>		<b>Saluran :</b>
	Bangunan Ukur	 Sekunder
	Bendung	 Tersier
	Box Tersier	
	Sadap	
	Talang	
SKALA		
1:40,000		
No. LBR	JML. LBR	TANGGAL
4	1	



Lampiran 31 Peta Letak Stasiun Hujan Mojowarno dan Stasiun Bareng



 PRODI TEKNIK SIPIL FAKULTAS TEKNIK UNIVERSITAS MUHAMMADIYAH SURABAYA		
JUDUL TUGAS AKHIR		
ANALISIS KEBUTUHAN AIR IRIGASI PADA DAERAH IRIGASI TAWANGSARI KABUPATEN JOMBANG		
JUDUL GAMBAR		
PETA TOPOGRAFI		
OLEH		
SAFIRA RAMADHANI NIM : 20161333011		
DOSEN PEMBIMBING 1		
ANNA ROSYTHA, ST., MT.		
DOSEN PEMBIMBING 2		
MIFTACHUL HUDA, S.Pd., MT.		
<b>Legenda :</b>		
Stasiun Hujan Bareng : Latitude : -7,6889 Longitude : 112,3044 Elevasi (dpl) : 108 m Desa : Bareng Kecamatan : Bareng Kabupaten : Jombang		
	Bareng	
Stasiun Hujan Mojowarno : Latitude : -7,63 Longitude : 112,3036 Elevasi : 61 m Desa : Mojowangi Kecamatan : Mojowarno Kabupaten : Jombang		
	Mojowarno	
SKALA		
1:100.000		
No. LBR	JML. LBR	TANGGAL
1	1	

## BIODATA PENULIS



**Safira Ramadhani**, lahir di Sidoarjo, 05 Maret 1994 merupakan anak dari ayah Agung Suprajogi dan Ibu Kristini Suhartati. Penulis telah menempuh pendidikan formal di SD Negeri Anggaswangi II (lulus tahun 2006), SMP Negeri 1 Sidoarjo (lulus tahun 2009), SMA Negeri 4 Sidoarjo (lulus tahun 2012), dan Institut Teknologi Sepuluh Nopember (DIII-Teknik Sipil, lulus tahun 2015).

Pada tahun 2016, penulis melanjutkan studi Program Sarjana di Program Studi Teknik Sipil Universitas Muhammadiyah Surabaya.

Penulis memiliki pengalaman kerja sebagai staff teknik sipil di PT. Geanara Pratama Konsultan mulai September 2015 hingga saat ini.

Email : ramadhanis075@gmail.com