



# Proceeding ICoHPS 2021

International Conference on Health Polytechnic Ministry of Health Surabaya

## Poltekkes Kemenkes Surabaya

Health Polytechnic of the Ministry of Health Surabaya - Indonesia

Surabaya, 6 - 7 October 2021



ISBN 978-623-97447-4-8



9 786239 744748

# PROCEEDING

## International Conference on Health Polytechnic Ministry of Health Surabaya Surabaya, 6-7 October 2021

### Editor:

#### ICoNPH

##### Manager

Yohanes Kambaru Windy, SPd M.Kes MPH

##### Editor in Chief :

Dr. Padoli, SKp, M.Kes

##### Editor :

Dr. Supriyanto, SKp, M.Kes

Dr. Dhiana Setyorini, M.Kep.Sp.Mat

Minarti, M.Kep.Sp.Kom

Adin Mu'afiro, SST, M.Kes

Hepta Nur Anugraheni, S.Kep.Ns, M.Kep

Kusmini Suprihatin, SKp, M.Kep.Sp.A

Ach. Arfan Adinata, S,Kep,Ns., M.Kep

#### ICoMid

##### Manager:

Dr. Heru SWN, S.Kep., MM. Kes

##### Editor:

Evi Pratami, SST., M. Keb

Kharisma Kusumaningtyas, SSiT., M. Keb

Titi Maharrani, SST., M. Keb

Suryaningsih, SSiT., M. Keb

#### ICoMLT

##### Manager:

Ayu Puspitasari, ST, M.Si

##### Editor:

Anita Dwi Anggraeni, SST, M.Si

Ratno Tri UTomo, SST

Lully Hanni Endarini, S.Farm, MFarm, Apt.

Era Fitria Yunita, STr.Kes

Marlinda R, A.Md

Tacik Idayanti, SST, S.Si

Riya Agustin, SST, S.Si

#### ICoEH

##### Manager:

Dr.Budi Yulianto,M.Kes

##### Editor:

Dr.Ir.Iva Rustanti Eri W. MT.

Dr.Sri Poerwati,ST,M.Si

#### ICoN

##### Manager:

Inne Soesanti, S. Sos., S. Si., M. Kes.

##### Editor:

Ani Intiyati, SKM., M. Kes.

#### ICoDOH

##### Manager:

Isnanto, S.Si.T.,M.Kes.

##### Editor:

Dr. Imam Sarwo Edi, S.Si.T.,M.Pd.

Mokhamad Ainu Roziq, S.ST

Sanda Astrinata, S.T.

# Proceeding International Conference on Health Polytechnic Ministry of Health Surabaya

ISBN: 978-623-97447-4-8

Copyright © 2021

The Proceeding of International Concerence aim to disseminate ideas for information and discussion. Comments or arguments for improvement of their presentation are welcome. The Views expressed in the papers are thoseof the authors. Article can be used, modified, and redistributed freely for non-commercial purposes (non-profit), provided this does not remove or change the attributes of the writer, not allowed to rewrite unless obtain prior permission from the author.

## Reviewer

### ICoNPH

Dr. Anita Joelianina, S.Kep.,Ns., M.Kes.  
Dr. Jujuk Proboningsih, SKp., M.KES.  
Dr. Moch. Bahruddin, M.Kep.,Sp. KMB  
Nikmatul Fadila, M.Kep.  
Hasyim Asyari, S.Kep.,NS., M.Ked.  
Diyah Wijayanti, M.Kep.  
Inge Dhamanti, SKM., MPH., Ph.D  
Dr.Dwi Ananto Wibrata, A.Per.Pend, SST, M.Kes

### ICoMid

Teta Puji Rahayu, SST., M. Keb  
Dwi Wahyu Wulan S, SST., M. Keb  
Queen Khoirun Nisa Mairo, SST., M. Keb  
Dwi Purwanti S.Kp., M. Kes  
Deasy Irawati, SST., M. Keb  
Esyuananik, SST., M. Keb  
Uswatun Khasanah, SST., M. Keb  
Ayesha Hendriana Ngestiningrum, SST., M. Keb  
Evi Yunita Nugrahini, SST., M. Keb  
Astuti Setiyani, SST., M. Kes

### ICoMLT

Dr. Anik Handayani, M.Kes  
Evy Diah Woelansari, S.Si.,M.Kes  
Ayu Puspitasari, ST.,M.Si  
Christ Kartika Rahayuningsih, ST., M.Si

### ICoEH

Dr.Aris Santjaka, SKM.,M.Kes  
Dr.Rico Januar Siitorus ,SKM.,M.Kes  
Irwan Sulistio,SKM.M,Kes  
Aries Prasetyo,SKM.MPH  
Narwati,SSi.,M.Kes  
Pratiwi Hermiyanti,SST.,M.KL  
Marlik,S.Si., M.S  
Suprijandani,SKM, MSc.PH  
Demes Nurmayanti,ST,M.Kes

### ICoN

Dr. Aripin Ahmad, S.Si.T, M.Kes  
Agus Hendra Al Rahmad, SKM, MPH  
Dr. Made Darawati, STP, M.Sc.  
Dr. Ir. Juliana Christyaningsih, M.Kes  
Taufiqurrahman, S.K.M., M.P.H  
Annas Buanasita, SKM., M. Gizi

### ICoDOH

Dr.Bejo Santoso.S.Si.T.,M.Kes  
Zaeni Dahlan,S.Si.T.,M.Ph

Published by Health Polytechnic Ministry of Health Surabaya Indonesia

Jl. Pucang Jajar Tengah No. 56 Surabaya 60282, Indonesia

Phone : +62-31-5027058

[www.poltekkesdepkes-sby.ac.id](http://www.poltekkesdepkes-sby.ac.id)

All rights reserved. No part of this publication may be reproduced, stored in a retrieval system or transmitted in any form or by any means, electronic, mechanical, photocopying, recording or otherwise, without the prior written permission of the copyright holder for which application should be addressed in the first instance to the publisher.



### Welcome Message from the ICoHPS General Chair

In the name of Allah, the Most Beneficent and the Most Merciful. May peace, mercy, and blessings of Allah be upon you.

On behalf of the technical program committee, we warmly welcome you to 2021 **4th International Conference of Health Polytechnic Surabaya (ICoHPS)** in Surabaya, Indonesia with the theme " Empowering the Health Professionals and Community in Mitigating the Impacts of Covid-19 Pandemic".

The committee has organized exciting technical programs for The 2nd International Conference on Electronics, Biomedical Engineering, and Health Informatics (ICEBEHI), The 1st International Conference on Nursing and Public Health (ICoNPH), The 1st International Conference on Midwifery (ICoMid), The 1st International Conference on Medical Laboratory Technology (ICoMLT), The 1st International Conference on Environmental Health (ICoEH), The 1st International Conference on Nutrition (ICoN), The 1st International Conference on Dental and Oral Health (ICoDOH), is the annual international conference organized by Poltekkes Kemenkes Surabaya, Indonesia and co-organized by Muhammadiyah University of Surabaya, Health Academy Rustida Banyuwangi. Stikes Mitra Adiguna Palembang, Poltekkes Kemenkes Sorong, Poltekkes Kemenkes Ternate, Poltekkes Kemenkes Manado, Poltekkes Kemenkes Semarang, Poltekkes Kemenkes Banjarmasin, Poltekkes Kemenkes Medan, Poltekkes Kemenkes Aceh, Poltekkes Kemenkes Kaltim, Poltekkes Kemenkes Denpasar, Poltekkes Kemenkes Tasikmalaya, Poltekkes Kemenkes Palangkaraya, Poltekkes Kemenkes Palembang, and Isabela State University Philippines As an annual international conference, 4<sup>th</sup> ICoHP provides excellent platform to share innovative idea and experiences, exchange information, and explore collaboration among researchers, engineers, practitioners and scholars in the field of health science, and medical engineering.

The Purpose of the conference are:

Knowledge, practice and experience sharing among experts to mitigate the impacts of Covid-19 Pandemic.

Achieve workable and applicable approaches to dealing with Covid-19 Pandemic

Improving public awareness about Covid-19 resilience Pandemic

Develop networking among experts and audiences from different disciplines to anticipate the new wave of Covid-19 Pandemic

Create collaboration among scholars to conduct research on the topic of Covid-19

The forms of activities are:

International Conference which will be attended by four keynote speakers from 4 countries namely Australia, Philippines, Thailand, Malaysia

International standard call for papers with International proceeding outputs, International journal and DIKTI Accredited journal.

All submitted paper sthrough out went through arigorous review process and each paper was evaluated. Besides those regular sessions, 4th ICoHPS 2021 also features world-class keynote/plenary speeches and distinguish-invited speakers that reflect the current research and development trends in the aforementioned fields. We are deeply indebted to all seven technical program committe members as well as our reviewers, who volunteered a considerable amount of their time and expert set ensure affair, rigorous, and timely review process. Many thanks should be given to our keynote and invited speakers who will share their experience in this conference. Last but not least, our since regratitude should begiven to all authors for submitting their work to 4th ICoHPS 2021, which has allowed us to assemble a high q u a l i t y technical program.

Welcome to 4<sup>th</sup> ICoHPS 2021 and hope you will enjoy this virtual conference.

With best regards,  
Dr. Siti Nur Kholifah  
General Chair



## Welcome To Health Polytechnic of the Ministry of Health, Surabaya



drg. Bambang Hadi Sugito, M.Kes  
Director  
Health Polytechnic of the Ministry of Health, Surabaya  
Assalamu'alaikumWr. Wb.

Praise Allah SWT for bestowing His mercy and blessings, and with His permission we held the The 4th International Conference of Health Polytechnic Surabaya (ICoHPS) in 2021 which is part of a series to commemorate the LUSTRUM IV 2021, Ministry of Health Surabaya Polytechnic.

The Covid-19 pandemic situation requires partnerships of various parties and the preparedness of supporting human resources. Health professionals on the frontline need updating on knowledge, skills and awareness to fight against Covid-19.

From some of the explanations regarding the Covid 19, the PoltekkesKemenkes Surabaya will hold 4th International Conference of Health Polytechnic Surabaya (ICoHPS) with the theme "**Empowering the Health Professionals and Community in Mitigating the Impacts of Covid-19 Pandemic**". This Conference will bring all scholars, scientists, epidemiologists, medical doctors, nurses, allied health professionals, and even politicians to share their expertise to attain a workable approach to dealing with the Covid-19." on 6 – 7 October 2021, Implementation of Activities in a virtual conference.

The conference consists of seven conferences in accordance with scientific families, including: Electromedical Engineering, Nursing, Midwifery, Medical Laboratory Technology, Dental Nursing, Environmental Health. The name of the International Conference (IC) under the umbrella of 4th ICoHPS consist:

1. The 2nd International Conference on Electronics, Biomedical Engineering, and Health Informatics(ICEBEHI)
2. The 1st International Conference on Nursing and Public Health (ICoNPH)
3. The 1st International Conference on Midwifery (ICoMid)
4. The 1st International Conference on Medical Laboratory Technology (ICoMLT)
5. The 1st International Conference on Environmental Health (ICoEH)
6. The 1st International Conference on Nutrition (ICoN)
7. The 1st International Conference on Dental and Oral Health (ICoDOH)

Finally, I would like to congratulate and say thanks to the Co Host consisting of 12 Poltekkes in Indonesia, Muhammadiyah University of Surabaya, Health Academy Rustida Banyuwangi. Stikes Mitra Adiguna Palembang..and all participant from other institution participating in the 4th International Conference of Health Polytechnic Surabaya (ICoHPS).

May God the Almighty facilitate our work. That is the delivery of my welcome.  
Thank you.

WassalamualaikumWr. Wb





# CONTENT

Welcome Message from the ICoHPS General Chair  
Welcome to Health Polytechnic of the Ministry of Health, Surabaya Indonesia

## ICoNPH

Relationship of Family Support With Quality of Life Among Breast Cancer Patients in Surabaya <i>Qamariyah Ulfah, Yuanita Wulandari, Supatmi</i>	1-6
Empowering Mother on Prevention and Intervention of Stunting on Magetan Regency <i>Nurlailis Saadah, Hilmi Yumni, Budi Yulianto</i>	7-15
Interventions To Reducing Stigma Toward Covid-19: Rapid Review And Practical Recommendation <i>Yusron Amin, Haswita</i>	16-22
Literature Review The Effect Of Progressive Muscle Relaxation On Random Blood Sugar Levels In Diabetes Mellitus Type 2 <i>Novanda Virdiyana Prameswary, Minarti, Lembunai Tat Alberta, Supriyanto</i>	23-28
The Effect of Negative Pressure Wound Therapy (NPWT) on Diabetic Ulcer Wound Healing (Literature Review) <i>Eka Sulistiana, Lembunai Tat Alberta, Adivtian Ragayasa, Dwi Adji Norontoko</i>	29-39
The Application Of Ergonomic Exercises In Elderly With Sleep Disorders (Insomnia) At Harapan Kita Nursing Home Palembang In 2021 <i>Zakinah Arlina, Italia</i>	40-45
Medication Adherence With Blood Pressure Of Hypertension Clients At Baureno Public Health Center <i>Presdiana Pratiwi, Padoli, Anita Joeliantina</i>	46-51
Nutritional Status with the Incidence of Acute Respiratory Infection in Toddlers at Kalirungkut Public Health Center Surabaya <i>Rapi Dhira Dentasari, Emung Mardiyana Hidayat, Indriatie, Dhiana Setyorini</i>	52-56
The Effectiveness Of Excellent Service In The Elderly As An Effort To Improve Service <i>Leni Wijaya, Bela Purnama Dewi</i>	57-62
The Impact of Therapy Foot Exercise And Foot SPA on Foot Sensitivity in Patiens with Diabetes Mellitus: A Literature Review <i>Firda Fauziyah, Aida Novitasari, Endang Soelistyowati, Hepta Nur Anugrahini</i>	63-69
The Effect Of Basic Life Support Health Education In First Aid Accident In Public Senior High School 3 Sidoarjo <i>Zenitha Firdaus Nirmalasari, Dwi Ananto Wibrata, Minarti, Kiaonarni Ongko W</i>	70-76
Bullying Behavior Among Primary School Students <i>Erna Dwi Nur'aini, Siti Nur Kholifah, Dinarwiyata, Baiq Dewi Harnani</i>	77-81
Case Study of Verbal Abuse Against Adolescence <i>Yuri Aulia Berliana F., Siti Nur Kholifah, Nikmatul Fadilah, Asnani</i>	82-84
Family Social Support To The Girls Experiencing Anxiety During Menarche at Dusun Jombang <i>Lisnur Devanda Putri, Baiq Dewi H, Hasyim As'ari, Yohane K. Windi</i>	85-88
Family Support To Elders With Gout Arthritis On Obeying Low Purine Diet <i>Nofinda Widya Sari, Dinar Wiyata, Intim Cahyono, Bambang Heriyanto</i>	89-93



The Effect Of Creambath Massage To Reduce Blood Pressure Of Dinda Salon Customers With Hypertension <i>Dinda Tri Agustina, Adin Mu'afiro, Adivtian Ragayasa, Dwi Ananto Wibrata</i>	94-99
Case Study Parents' Perceptions About Early Marriage In Wonokasian Village, Sidoarjo Regency <i>Hetty Nur Azizah, Baiq Dewi Harnani, Hasyim As'ari, Yohanes K. Windi</i>	100-103
Case Study Of Family Efforts Towards Hyperthermia Treatment In Children <i>Tyas Ayu Prasetyo, Hasyim As'ari, Minarti, Intim Cahyono</i>	104-106
Improving The Quality Of Life Of Plwha Through The Combined Peer And Family Supporting Model <i>Mahdalena, Mahpolah</i>	107-111
Case Study Parents' Efforts In Preventing Acute Respiratory Infection In Toddlers <i>Putri Mei Arifianti, Hayim As'ari, Intim Cahyono</i>	112-114
Family Support In Caring For People With Mental Disorders At The Menteng Health Center PalangkaRaya City <i>Maria Magdalena Purba, Irene Febriani</i>	115-119
Anxiety Heart Catheterization Of Coronary Heart Disease Patients <i>Rolly Rondonuwu, Esrom Kanine, Grace Kapugu, Dorce Sisfiani Sarimin</i>	120-128
Qualitative Analysis of Early Marriage and The Implications on Family Life in Bitung City <i>Ellen Pesak, Yourisna Pasambo, Jon Welliam Tangka, Nurseha Djaafar, Maria Terok, Semuel Tambuwun, DorceSisfiani Sarimin, Tinneke A. Tololiu, Maitha A. W. Keloay, Nita Riany Momongan, Bongakaraeng</i>	129-135
The Literature Review: The Effect of Pronation Position on Hemodynamic Change In Premature Baby With Respiratory Distress Syndrome <i>Siti Rochmatul Hidayah, Hotmaida Siagian, Kusmini Suprihatin, Dony S, Yetti Wilda</i>	136-144
The Correlation Between Nutritional Status With The Age of Menarche At Teenage Girls In Barendkrajan Village <i>Farra N.P., Siti Maimuna, Kusmini S, Afif Hilmi M</i>	145-149
Literature Review : Relationship Between Central Obesity And Hypertension <i>Athena J.T, Hotmaida S, Dony S, Kusmini</i>	150-157
Literature Review: Kangaroo Mother Care Treatment for Temperature Change In Low Birth Weight Babies <i>Khoiru Nikmah, Kusmini Suprihatin, Suprianto, Hotmaida Siagian</i>	158-164
Literature Review: Self Care Management on Blood Sugar Level Control In Diabetes Mellitus Type 2 Clients <i>Farin Fauziah, Siti Maimuna, Luluk Widarti, Tanty Wulandari</i>	165-170
Literature Review: The Effect of Baby Massage on Baby's Weight Gain <i>Nuur Annisa Setiawan, Kusmini Suprihatin, Alfi Maziyah, Tanty W, Yetti W</i>	171-176
Literature Review: The Effectiveness Of Self Management In Patients With Heart Failure <i>Yholanda R.H, Dony S, Hotmaida S, Suprianto, Kusmini</i>	177-182
Self-Efficacy In Self-Care Of Type 2 Diabetes Mellitus Clients At Kemangi Village Bungah District Gresik Regency	183-185



Case Study Of Peer Support To Obese Students At Diploma 3 Sutopo Nursing Program <i>Harlini Permata Sari, Dyah Wijayanti, Siti Nur Kholifah, Hasyim As'ari</i>	186-189
Effectiveness Of Prolanis On Reducing And Stability Of Blood Glucose Levels Of Patients Type 2 Diabetes Mellitus In Community Health Center Care Siko Ternate City <i>Al Azhar Muhammad</i>	198-204
Warm Compress On The Intensity Of Pain In Elderly With Arthritis Pain : A Literature Review <i>Yora Nopriani, R.A. Fadila</i>	205-212
Preparedness of Parents in Preventing Stunting at Jatirejo Village The District of Nganjuk <i>Riyola Wahyunisa, Bambang Heriyanto, Hilmi Yumni, Hermin Tumini</i>	213-218
The Relationship Of Knowledge About Covid-19 With The Health Maintenance Of Diabetes Mellitus Patients <i>Siti Badriah, Dini Mariani, Betty Suprapti</i>	219-224

## **ICoMid**

Therapeutic Communication Midwife Practice Independently On Maternal Stage I In Covid-19 Era <i>Rohani,Veradilla</i>	1-6
The Correlation Between Exclusive Breastfeeding And Weight Loss In Lactating Women In The Independent Practice Midwife Yusida In 2020 <i>Reni Saswita, Vera Yuanita, Peti Tunjung Sari</i>	7-10
The Influence Of Counseling On The Level Of Knowledge And Attitude Of Mothers About Child Development In The Talang Jambe Village Palembang <i>Dona Tri Sundari, Nurbaity</i>	11-15
Relationship of Dietary Abstinence and Healing Time for Sectio Caesarea Wounds (A Systematic Review Approach) <i>Yuli Suryanti, Sri Emilda</i>	16-20
Loving Breastfeeding for Mother on Purperium Periode (An android-based educational media application) <i>Meti Widiya Lestari, Elvira Naftiani, Dita Eka Mardiani, Lia Nurcahyani</i>	21-26
The Factors Related To Stunting In Toddlers Aged 24-59 Months In Berasang Village, Kisam Tinggi District, Oku Selatan In 2020 <i>Faulia Mauluddina ,Untari Anggeni, Uun Sintia</i>	27-35
Analysis Of Infant Factors Affecting The Event Of Hypothermia In Newborn Babies (Literature Review) <i>Fanni Noor Arafanti, Dina Isfentiani, Ani Media Harumi</i>	36-41
Relationship between Antenatal Depression and Pre-Eclampsia (LITERATURE REVIEW) <i>Bilqis Nur Mustofa, Dwi Wahyu Wulan Sulisetyowati, Ani Media Harumi</i>	42-49
The analysis of the causes of PCOS (Polycystic Ovary Syndrome) <i>Faradila Elmi Sofiana, Yuni Ginarsih, Titi Maharrani</i>	50-57
Association Between Socio Economic And Environmental Sanitation With Stunting In Toddlers In The Work Area Of Dombusoi Health Center <i>Henrietta Imelda Tondong, Hastuti Usman, Luh Ayu Diyanasari</i>	58-62





Factors Of History Of Curettage, Age And History Of C-Section In The Incidence Of Placenta Previa (Literature Review) <i>Ajeng Aryanningsih, Tatarini Ika Pipit Cahyani, Kharisma Kusumaningtyas, Dwi Wahyu Wulan Sulisetyowati</i>	63-72
Back Massage Using Frangipani Aromatherapy Oil To Reduce The Level Of Tumor Necrosis Factor Alpha And The Intensity Of Labor Pain <i>Ni Nyoman Budiani, Ni Gusti Kompiang Sriasih, Gusti Ayu Marhaeni, Gusti Ayu Putri Kumala</i>	73-80
Green Betel Leaf Decoction For Discharge Complaints Of Teenage Girls In Hidayatullah Islamic Boarding School Ternate City <i>Nurdiana Lante, Istiana Asrari Bansu, Rusdiyah</i>	81-86
A Sociodemographic outlook for commissioning exclusive breastfeeding during Covid-19 pandemic in Palangkaraya, Central Kalimantan <i>Oktaviani</i>	87-91
The Use of Belly Bengkung on Uterine Fundal Height In Postpartum Mother <i>Melyana Nurul Widyawati, Febtiari Pedra Buana, Ngadiyono, Kusmini Suprihatin, Lutfiana Kusumawati</i>	92-96
<b>ICoMLT</b>	
Cadmium (Cd) Levels With Kidney Function Examination As An Indication Of Kidney Damage In Petrol Station Operators In North Surabaya with Atomic Absorption Spectrofotometry <i>Oryza Amilussolihati, Indah Lestari, Christ Kartika</i>	1-6
Cadmium (Cd) Levels In The Blood Of Communities Consuming Mystus Gulilo Around The Kenjeran Beach Area Of Surabaya With Atomic Absorption Spectrophotometry Method <i>Vernanda Arysa Nabilla, Indah Lestari, Christ Kartika Rahayuningsih, Ayu Puspitasari</i>	7-12
Difference of Body Posture for Venous Blood Collection on Hemoglobin Levels <i>Muhammad Ihsan Tarmizi, Nurhayati, Saprianto</i>	13-16
The Effect Of Drinking Calcareous Water On The Image Of Renal Function And Calcium In Kesan Eastern Mountain Residents, Ketapang Madura <i>Rahma Widyastuti, Ellies Tunjung S.M, Nur Vita Purwaningsih</i>	17-21
Identification of Intestinal Nematodes and Cestodes in Cows (Boss Sp.) With The Saturated NaCl Method in Tegalbanteng Village of Lumajang Regency <i>Mufti Qoulan Syadida, Anindita Riesti Retno Arimurti, Suyatno Hadi Saputro, Fitrotin Azizah</i>	22-25
Differences of Erythrocyte Index in Patients With Diabetes Mellitus Given The Criteria for Prediabetes And Diabetes at Kedungdoro Public Health Center Surabaya <i>Adhistantia Krisandy Putri, Suhariyadi, Evy Diah Woelansari, Anita Dwi Anggraini</i>	26-33
Accuracy And Precision Of Uric Acid Examination Point Of Care Testing Method And Uricase Enzymatic Colorimetric Method <i>Fitria Yulfirda Arini, Anik Handayati, Ayu Puspitasari</i>	34-38
Overview of Covid-19 Case in Lumajang Regency on 2020 <i>Titik Erliyah</i>	39-48
Antimicrobial Potential Of Kepok Banana Sheaths Extract (Musa paradisiaca formatypica) On The Growth Of Staphylococcus aureus Bacteria <i>I Nyoman Jirna, Gusti Ayu Made Ratih</i>	49-54
Incidence Of Worm Infection In Primary School Children In The New Normal Implementation Of Pandemi Covid-19 In The Coastal Area Of North Sulawesi <i>Indra Elisabet Lalangpuling, Michael V.L Tumbol, Muh. Ali Makaminan</i>	55-60



Diagnostic Test Of Frozen Section Histopathological Preparations Against Gold Standard Histopathology Of Paraffin Block In Breast Tumor <i>Anggraeni Windi Rosari, Anik Handayati, Wisnu Istanto</i>	61-65
Carboxyhemoglobin (CoHb) Levels In Active And Passive Smokers In Bangkalan Regency <i>Devyana Dyah Wulandari, Medy Rozaliyati, Farach Khanifah, Aprilia Dewi Saputri, Izzatun Nailah, Nor Halimah</i>	66-72
Representation of NLR (neutrophil lymphocyte count ratio) values in coronavirus patients (Covid-19) by age group at Gatoel Mojokerto Hospital <i>Juliawan Apurwatama, Anik Handayati, Rinza Rahmawati</i>	73-77
A Mini Review Of Natural Antioxidant For Alzheimer's Disease <i>Emma Kamelia, Marni Br Karo, Tetty Rina A, Sri Rahayu, Titus Tambaip, Hadiyat Miko</i>	78-84

## ICoEH

Overview Of Behavior And Control Of Dengue Fever In The Work Area Of The Sabokingking Palembang Health Center Year 2020 <i>Farhani Sucitami, GhinaAjeng Felicia, Emmy, Priyadi, Maksuk</i>	1-11
The Potential of Fermented Oyster Mushroom Filtrate ( <i>Pleurotus ostreatus</i> ) as Host-Seeking Attractant of <i>Aedes aegypti</i> Mosquito <i>Feby Carira Sindy, Pratiwi Hermiyanti, Fitri Rokhmalia, Demes Nurmayanti</i>	12-20
Management of Hazardous and Toxic (B3) Covid-19 Infectious Waste in Nganjuk Hospital 2021 <i>Ahlun Najaa Nazzun Priyono Putro, Fitri Rokhmalia, Darjati</i>	21-25
The Effect Of Dust Levels In The Furniture Industry On Resident's Subjective Complaints (Case Study In Tanjungan Village, Driyorejo District, Gresik Regency) <i>Yanandra Alifia Priandani, Rachmaniyah, Setiawan</i>	26-31
The Effect Of Distance Of Benowo Waste Final Disposal (Tpa) Surabaya City On H <sub>2</sub> s And Nh <sub>3</sub> Levels In The Settlement Environment <i>Imilda Lidiawati, Khambali, Darjati</i>	32-36
Relationship Of Hygiene And Sanitation With Microbiological Quality Of Drinking Water Depo Water During The Covid-19 Pandemic In 2021 (In Dupak Village, Krembangan District, Surabaya City) <i>M. Lazzuardhi Ilmi, Khambali, Demes Nurmayanti</i>	37-42
Influence Of SO <sub>2</sub> and NH <sub>3</sub> Gas Levels On Public Health Around Benowo Final Disposal Site, Surabaya City <i>Rifka Anggraeni, Dr. Khambali, Narwati</i>	43-49
The Effect Of Noise Due To Aircraft Passing In Settlements Around Juanda Airport On Community Subjective Complaints (Case Study in Sedati Gede Village, Sidoarjo in 2021) <i>Arina Khusnal Hidayaty, Dr. Khambali, Irwan, Rachmaniyah, Demes Nurmayanti</i>	50-54
The Effect Of Working Period, Nutritional Status, And Smoking Habits On Work Fatigue at PT. Atlantic Anugrah Metalindo Surabaya Year 2021 <i>Presillia Aulina, Dr. Khambali, Suprijandani, Winarko, Rusmiati</i>	55-60
Society Role in Drinking Water Treatment with <i>Ipomoea carnea</i> <i>Sri Poerwati, Aries Prasetyo, Waella Septamari Budi</i>	61-66
<i>Ipomoea carnea</i> Leaf Extract As Antibacterial Drinking Water Deep Wells <i>Sri Poerwati, Aries Prasetyo2 Waella Septamari Budi</i>	67-70



The Examination of The Quality of Chitosan from Bamboo Shell Waste with Variations of NaOH Concentration in the Deacetylation Process 71-78  
*Sayyidah Nafysah Ahmad, Darjati, Hadi Suryono*

## ICoN

- The Association Between Peers Influence and Sweets Consumption Pattern in Adolescent Girls 1-6  
*Nisri Ina Zahrah, Moh Fanani, Tonang Dwi Ardyanto*
- Effect of Dates (*Phoenix dactylifera* Linn.) on Low-Density Lipoprotein (LDL) in Type 2 Diabetes Mellitus Patients 7-11  
*Erlyna Jayeng, Eti Poncorini, Eny Sayuningsih, Sari Luthfiyah*
- The Effect Of Training Using The Stunting Module On The Knowledge And Skills Of Cadres About Prevention And Handling Of Stunting At Tanoyan Health Center, Lolayan Regency, Bolaang Mongondow Regency 12-18  
*Meildy E. Pascoal, Irza N. Ranti, Vera T. Harikedua, Kevin G. Pascoal*
- The Variation " Tofu Waste Nugget With Subtitution Of Basil Leaves Extract " On Organoleptic Test And Bacterial Pollution 19-27  
*Firdaus Sukma, Juliana Christyaningsih, Melina Sari, Nurul Hindaryani*
- Administration of Pismatom Juice in Increasing the Energy Efficiency In Middle-Distance Run Athletes of PASI Denpasar, Bali-Indonesia 28-32  
*I Wayan Juniarsana, IGA Ayu Dharmawati*
- Acceptability And Nutritional Content Of Supplematary Food For Pregnant Woman With Chronic Energy Deficiency In Sambikereb Sub-District Surabaya 33-49  
*Ani Intiyati, Dian Shofiya, Berliana Putri Nurlaili, Devi Imroatul Latifah*
- Effect of additional tuna fish flour (*Euthynnus affinis*) to organoleptic test of taro cookies (*Colocasia l. Schoott*) for pregnant women 50-59  
*Kurniati Dwi Utami, Rieska Indah Mulyani*
- The Effect Of Giving Explanation With Card Media Make A Match Method To The Increase Of Anemia Prevention Behavior At 4TH Grade Students Of Elementary School In Tanjung Morawa Sub District 60-64  
*Mahdiah, Erlina Nasution, Ida Nurhayati*
- Organoleptic Properties and Nutrient Cookies from Flour of Taro Kimpul, Salak Manonjaya, and Tolo Beans As An Emergency Food 65-76  
*Fini Fitria Febriani, Sumarto*
- Effectivity Of Complementary Feeding Guidelines On Mother's Knowledge Babies In Argasunya Village, Cirebon City 77-85  
*Uun Kunaepah, Alina Hizni, Anis Abdul Muis, Priyo Sulistiyono*
- Moringa Leaf Bubble Drink Increases Hemoglobin Levels In Adolescent Girls 86-91  
*Rudolf Boyke Purba, Ni Made Dewi Ardiani, Fred Rumagit dan Joice M. Laoh*
- The Test Of Acceptance And Nutritional Contents Of Telle Fishball Formulation As An Alternative Snack For Pre-school Age Children With Picky Eater Risks Of PEM And VAD 92-102  
*Sephia Tri Cahyaning Hari, Taufiqurrahman, Nuning Marina Pengge*
- Acceptance Test And Antioxidant Levels Cat Tongue Cookies "Red Rosella Flower Flour" As An Alternative Snack For Hypertension Patients 103-108  
*Dea Larasati, Juliana Christyaningsih, Melina Sari, Nurul Hindaryani*
- Food Behavior chosen among communities in preventing of COVID-19 infection in East Java 109-115  
*A Buanasita, L Sholihah, Y. Prabawani, I Soesanti*



Nutrition Knowledge and Frequency of Food Consumption During COVID-19 Outbreak 116-124  
*Meirina Dwi Larasati, Elvira Dona Lukmana*

### **ICoDOH**

The Influence of Information Technology-Based Toddler Dental Health Care Model (AGITA) on Mothers towards Teeth Brushing Skills of Children 1-6  
*Wiangke Fajrin, Tri Wiyatini, Diyah Fatmasari*

The Effect Of Gargling Coconut Essential Oil (*Cocos Nucifera* L) With Oil Pulling Method Against Tooth Calculus Index And Papila Bleeding Index In Woman With Gingivitis Disease 7-14  
*Rosdiana Tiurlan Simaremare, Manta Rosma, Kirana Patrolina Sihombing*

Solubility of Calcium in Artificial Saliva Made from Golden Snail Shells for Tooth Remineralization 15-18  
*Marlindayanti, Ismalayani, Podojoyo*

Determinants Of Dental And Oral Disease In Pregnant Woman From A Sociodemographic Aspect 19-24  
*Aulia Nur Ihza Josi Putri, Silvia Prasetyowati, Soesilaningtyas, Isnanto*



# ICoMLT

International Conference on Medical Laboratory Technology



## Identification of Intestinal Nematodes and Cestodes in Cows (*Boss Sp.*) With The Saturated NaCl Method in Tegalbanteng Village of Lumajang Regency

---

Mufti Qoulan Syadida<sup>1</sup>, Anindita Riesti Retno Arimurti<sup>2</sup>, Suyatno Hadi Saputro<sup>3</sup>, Fitrotin Azizah<sup>4</sup>

<sup>1</sup> Study Program DIII Health Analyst, Faculty of Health Sciences, University of Muhammadiyah Surabaya, Indonesia; muftisyadida2017@gmail.com

<sup>2</sup> Study Program DIII Health Analyst, Faculty of Health Sciences, University of Muhammadiyah Surabaya, Indonesia; aninriesti@gmail.com (Corresponding Author)

<sup>3</sup> Study Program DIII Health Analyst, Faculty of Health Sciences, University of Muhammadiyah Surabaya, Indonesia; shs.yatno@gmail.com

<sup>4</sup> Study Program DIII Health Analyst, Faculty of Health Sciences, University of Muhammadiyah Surabaya, Indonesia; ichafitrotin@gmail.com

---

### ABSTRACT

The high number of cases worms infection in cattles in East Java in 2015, especially Lumajang Regency, showed that 16.5% of cattles tested positive for worm infection. Contamination of worm parasites in farm animals when inedible by humans can cause serious diseases that attack the intestines and lungs. This is the background of researchers conducting this study. In the study conducted by researchers, 30 samples were taken randomly in cows in Tegalbanteng Village of Lumajang Regency and then examined for the presence of intestinal nematode and Cestoda worm parasites using the saturated NaCl method or flotation. Showed that of the 30 samples examined, 14 samples with a percentage of 46.7% positive were adrithetic to the Gut Nematodes, especially the species *Ascaris lumbricoides* and 16 samples with a percentage of 53.3% negatively infected with both the Intestinal Nematodes and Cestoda groups. From the results of this study it can be concluded that the high number of abuses in Tegalbanteng Village of Lumajang Regency of 46.7% shows a lack of concern for diseases that can infect livestock by livestock owners.

**Keywords:** Intestinal Nematodes, Cestoda, Kecacingan, Cow (*Boss Sp.*).

---

### INTRODUCTION

Quoted from the official website of the East Java provincial Animal Husbandry Office, in Lumajang regency in 2015 it was obtained that 16.5% of calves tested positive for kecacingan or helminthiasis (DisNak JaTim, 2015). This shows that disease in livestock is a problem that needs special attention so that the quality of livestock can continue to increase. If the infected cow is consumed by humans in large quantities and continues continuously, it can cause health problems in humans themselves, including the onset of worm infections in humans. Worms in cattle are usually caused by infection with a class of gastrointestinal worms that includes the intestinal Nematode and Cestoda classes. Several types of nematodes were found, namely *Haemonchus*, *Strongylides*, *Charbetia*, *Trichuris*, *Ostergia*, *Bunostonium*, *Tricotrongylides* and *Ascaris*. Meanwhile, from the cestodes class, *Taenia*, *Avitellina*, *Moniezia benedeni* and *M. expansa* were found (CC, et al., 2018). According to Chairunnisa (2018), there are many factors that cause cows to be infected with worms including high rainfall, temperature, humidity and poorly maintained cage sanitation (Chairunnisa, (2018) in (Arimurti, et al., 2020)). Against the background of these data and conditions, the authors wanted to conduct research to find out how the picture of intestinal nematode worms and Cestoda in cows (*Boss Sp.*) with the saturated NaCl method in the village of Tegalbanteng Lumajang district.

### METHODS

In this study, ethical clearance was not carried out because researchers did not treat animals, but researchers only took feces that had come out of animals. This study was conducted using the saturated NaCl test method and conducted secondary data collection to farm animal owners through interviews and questionnaires related to cow breed, cow age, cow sex, vaccination, etc. The principle of examination of this study is to take advantage of differences in the weight of the type of parasite, in this case intestinal nematodes and cestodes, with the weight of the medium type that is saturated NaCl. The weight of the type of parasite is smaller than the weight of the medium type, so the parasite will float on the surface of the medium and attach to the coverglass. This



**THE 4<sup>th</sup> INTERNATIONAL CONFERENCE ON HEALTH POLYTECHNICS OF SURABAYA  
(ICOHPS)  
1<sup>st</sup> International Conference on Medical Laboratory Technology (ICoMLT)**

---

method is also known as the buoyancy method or flotation method. After the research, the data obtained will be calculated to look for a percentage of positive and negative results using the formula:

$P = \frac{F}{N} \times 100\%$	Information: P = Percentage of positive or negative samples F = Number of positive or negative samples N = Total number of samples
--------------------------------	---

**RESULTS**

Based on the research that has been done, the data is presented in the following table:

**Table 1. Tabulation Data Results of examination of Intestinal Nematodes and Cestodes in Cow Feces (*Boss Sp.*)**

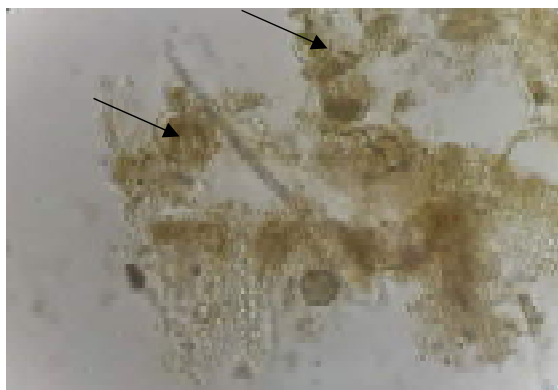
Sample code	Results of Identification of Parasites Intestinal Nematodes		Results of Identification of Parasites Cestodes	
	Positive(+)	Negative (-)	Positive (+)	Negative (-)
1.	(+)			(-)
2.		(-)		(-)
3.	(+)			(-)
4.		(-)		(-)
5.	(+)			(-)
6.	(+)			(-)
7.		(-)		(-)
8.		(-)		(-)
9.		(-)		(-)
10.	(+)			(-)
11.	(+)			(-)
12.		(-)		(-)
13.		(-)		(-)
14.		(-)		(-)
15.		(-)		(-)
16.	(+)			(-)
17.		(-)		(-)
18.	(+)			(-)
19.	(+)			(-)
20.		(-)		(-)
21.		(-)		(-)
22.		(-)		(-)
23.	(+)			(-)
24.	(+)			(-)
25.		(-)		(-)
26.	(+)			(-)
27.	(+)			(-)
28.		(-)		(-)
29.		(-)		(-)
30.	(+)			(-)

Jumlah	14	16	0	30
--------	----	----	---	----

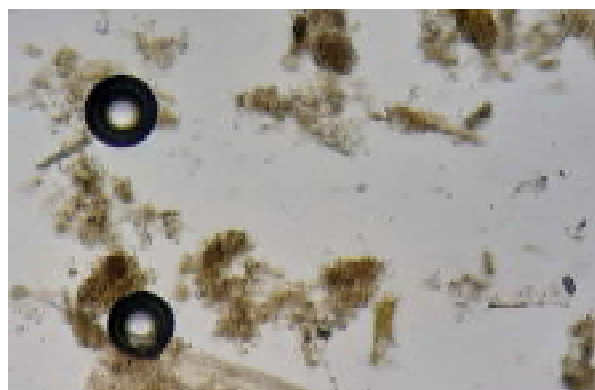
Information:

- a. Positive sign (+): Indicates the presence of eggs or larvae or worms of the Intestinal Nematodes or Cestoda
- b. Negative signs (-) : Does not indicate the presence of eggs or larvae or worms of the Intestinal Nematodes or Cestoda

From the table above obtained the results that from 30 samples examined by researchers, showed a number of 16 positive samples and 14 other samples negatively infected with intestinal nematode group worms. And 0 positive samples and 30 negative samples infected with the disease of dwarfism from the Intestinal Nematodes and Cestoda groups.



Sample Number 2  
Positive: there are *Ascaris lumbricoides* eggs  
Magnification 40x



Sample Number 12  
Negative : there is no parasite  
Magnification 40x

## DISCUSSION

### A. Identification of Eggs, Larvae, and Intestinal Nematodes Worms

Of the 30 samples examined by researchers, 14 samples with a percentage of 46.7% tested positive for intestinal nematode worms, especially the species *Ascaris lumbricoides* (roundworms). And 16 samples with a percentage of 53.3% negative or not infected with intestinal nematode group worms. The results obtained are in line with secondary data that has been collected by the author with the method of questionnaire to the owners of livestock related to the type of cow, age of the cow, gender of the cow, vaccination, cage management etc. Where all cattle owners state that cows are only injected or vaccinated when the female cow is pregnant and there is no vaccination or worm medicine.

In addition, other factors that support a considerable percentage of disreidies are the pattern of cage management and poor livestock care. Cow owners clean the cage every day in the morning or evening, but only bathe the cow twice a week or even not at all. The high percentage of livestock, especially cows in Tegalbanteng Village, Lumajang Regency, is also due to the lack of knowledge of livestock owners about the importance of giving worm medicine.

In research conducted by Cahirunnisa (2018), it was explained that in disre berating in farm animals can be caused by environmental factors such as temperature, humidity, rainfall, and poor levels of cage hygiene can cause farm animals to contract kecacingan (Chairunnisa (2018) in (Arimurti, et al., 2020)). In addition, the lack of knowledge of farm animal owners related to diatribes, symptoms of kinis, preventive or preventive efforts and treatment is also a factor in causing farm animals to be infected by worms (Nuraini, et al., 2020).

### B. Identification of Eggs, Larvae, and Cestoda Worms

In this study, 30 samples examined showed that none of the samples were infected with Cestoda infection. So that the percentage of both positive and negative results is 0%. Although no infection was found due to the Cestoda group, prevention efforts need to be done so as not to appear new cases or an increase in cases of abuse.

**THE 4<sup>th</sup> INTERNATIONAL CONFERENCE ON HEALTH POLYTECHNICS OF SURABAYA  
(ICOHPS)  
1<sup>st</sup> International Conference on Medical Laboratory Technology (ICoMLT)**

---

Some efforts that can be made to prevent infection in livestock are by giving worms periodically every 3-6 months for general prevention even though the animal does not show symptoms. Good application of sanitation and hygiene of the cage: cleaning with disinfectant once every 2 weeks, maintaining the cleanliness of livestock by preventing excrement. Increase the endurance of farm animals by giving multivitamins regularly with the supervision of veterinarians or animal mantri. Provide knowledge about diatribes, symptoms, prevention, and treatment in breeders (Nuraini, et al., 2020).

### **CONCLUSION**

Based on research that has been conducted on cow feces in Tegalbanteng Village of Lumajang Regency conducted by saturated NaCl method, it can be concluded that from 30 samples examined obtained results: The Gut Nematodes group was found in 14 samples by 46.7% especially *ascaris lumbricoides* species and 16 negative samples by 53.3%. The Cestoda group was not found in the 30 samples, so the percentage of diatribes was 0% positive and 0% negative.

### **REFERENCES**

- Arimurti, A. R. R., Merinda, V. F. & Zahro, F., (2020). Parasitic Intestinal Nematodes And Cestodes in Cow Feces (*Boss Sp.*) At Sumber Jaya Ternak Farm, Tikung Subdistrict, Lamongan Regency, East Java. *The Journal Of Muhammadiyah Medical Laboratory Technologist*, Volume 3 No. 1, pp. 39-52.
- CC, A., M. M. & A. C. (2018). Low Prevalence of Helminths in Faecal Samples of Cattle and Goats from Trans-Amadi Abattoir (Slaughterhouse), Port Harcourt, Nigeria. *SF Journal of Environmental and Earth Science*, Volume 1 No. 1, pp. 1-3.
- Dep. Parasitologi FKUI, (2013). *Parasitology of Medicine. Fourth ed. Jakarta: FKUI Issuing Agency.*
- DisNak JaTim, 2015. The Need for Identification and Mapping of Internal Parasite Cases. [Online] Available at: <https://disnak.jatimprov.go.id/web/beritautama/read/1143/perlunya-identifikasi-dan-pemetaan-kasus-parasit-internal> [Accessed 5 Juni 2021].
- Gunawan, I. W. N. F. et al., (2020). Health Services on Balinese Cattle in Support of Beef Self-sufficiency Program in Keramas Village of Blahbatuh District of Gianyar Regency. *Udayana Serving Bulletin*, Volume 19 No. 2, pp. 206-209.
- Nuraini, D. M. et al., (2020). Capacity Building of Beef Cattle Health Management in Pelemrejo, Andong, Boyolali. *Journal of Community Empowering and Services*, Volume 4 No. 2, pp. 102-108.
- Pemerintah Indonesia, (2009). Website of the Directorate General of Animal Husbandry and Animal Health. [Online] Available at: <https://ditjenpkih.pertanian.go.id> [Accessed 5 Juli 2021].
- Supriadi, Kutbi, M. K. & Nurmayani, S., (2020). Identification of Gastrointestinal Nematodes Worm Parasites in Balinese Cows (*Bos sondaicus*) in Taman Ayu Village of West Lombok Regency. *Journal of Scientific Biology*, Volume 8 No. 1, pp. 58-66.
- Susilo, H., Abdilah, N. A. & Amelia, K. R., (2020). Identification of Parasitic Worm Eggs in Feces of Livestock in Banten Province. *Journal of Biology and Learning*, Volume 15 No. 2, pp. 21-30.