

# BUKTI KORESPONDENSI

## ARTIKEL JURNAL NASIONAL BEREPUTASI SINTA 4

Judul Artikel : Double infection by Multi-Drug Resistant *Escherichia coli* bacteria: A case report



Jurnal : International Islamic Medical Journal, Vol. 6 No. 1 (2024): June - Articles

Penulis : Ayu Lidya Paramita, Yelvi Levani

NO	PERIHAL	TANGGAL
1	Bukti Submit Artikel	25 July 2024
2	Bukti resubmit artikel yang setelah revisi redaksi (Bukti Review)	19 Agustus 2024
3	Bukti konfirmasi artikel <i>accepted</i> (Bukti Revisi)	16 September 2024
4	Bukti konfirmasi artikel <i>published online</i> (Bukti <i>Copyediting</i> dan Pembayaran)	4 Oktober 2024
5	Bukti Artikel yang <i>published</i>	8 Oktober 2024

# 1. Bukti Submit Artikel

International Islamic Medical Journal



[← Back to Submissions](#)

6286 / Paramita et al. / Double infection by Multi-Drug Resistant Escherichia coli bacteria: A case report

Library

Workflow

Publication


Submission

Review


Copyediting

Production

Submission Files

 Search

▶

 29267

Case Report Ayu-Yelvi IIMJ Juli 2024.rtf



July 25, 2024

Article Text

Download All Files

## 2. Bukti resubmit artikel yang setelah revisi redaksi (Bukti Review)

International Islamic Medical Journal



[← Back to Submissions](#)

Submission

Review

Copyediting

Production

Round 1



**Round 1 Status**

Submission accepted.

**Notifications**

<a href="#">[IJM] Editor Decision</a>	2024-08-19 04:16 AM
<a href="#">[IJM] Editor Decision</a>	2024-09-12 12:04 PM
<a href="#">[IJM] Editor Decision</a>	2024-09-17 06:00 AM
<a href="#">[IJM] Editor Decision</a>	2024-10-04 06:03 AM

International Islamic Medical Journal



[← Back to Submissions](#)

Submission

Review

Copyediting

Production

Round 1

**Round 1 Status**

Submission accepted.

**Notifications**

<a href="#">[IJM] Editor Decision</a>	2024-08-19 04:16 AM
<a href="#">[IJM] Editor Decision</a>	2024-09-12 12:04 PM
<a href="#">[IJM] Editor Decision</a>	2024-09-17 06:00 AM
<a href="#">[IJM] Editor Decision</a>	2024-10-04 06:03 AM

**Review**

2

Revisions

Ayu Lidya Paramita:

We have reached a decision regarding your submission to International Islamic Medical Journal, "Double infection by Multi-Drug Resistant Escherichia coli bacteria: A case report".

Our decision is: Revisions Required

Reviewer A:

The background should be written based on SQPR structure.

What is the objective of this case report? It has to be written on Introduction

File attached was RTF format, so I can't open the figures.



Conclusion must be more comprehensive.

Some references are more than 5 years ago

Recommendation: Revisions Required

3. Bukti konfirmasi artikel accepted (Bukti Revisi)

International Islamic Medical Journal





[← Back to Submissions](#)

[\[IJM\] Editor Decision](#)

2024-10-04 06:03 AM

Reviewer's Attachments



 Search


 29730

iimj-review-assignment-6286-Article+Text-29722.rtf

August 16, 2024

Revisions

 Search  Upload File


 30372

A-iimj-review-assignment-6286-Article+Text-29722 REVISI.doc

September 16, 2024

Article Text

Review Discussions

 Add discussion

Name	From	Last Reply	Replies	Closed
------	------	------------	---------	--------

4. Bukti konfirmasi artikel published online (Bukti Copyediting dan Pembayaran)

International Islamic Medical Journal

← Back to Submissions

SubmissionReviewCopyeditingProduction

Copyediting Discussions

Add discussion

Name	From	Last Reply	Replies	Closed
<a href="#">IIMJ Payment Notification</a>	iimj2019	-	0	<input type="checkbox"/>
2024-09-29 01:05 PM				
▶ <a href="#">PAYMENT</a>	alpdr	-	0	<input type="checkbox"/>
2024-10-04 02:50 AM				

Copyedited

Search

30634

proof.Read Ayu.doc

October 4, 2024

Article Text

International Islamic Medical Journal

← Back to Submissions

6286 / Ayu Lidya Paramita (alpdr)

Workflow

Submission

Production

IIMJ Production

Participants

International Islamic Medical Journal Faculty of Medicine UNUSA (iimj2019)

Ayu Lidya Paramita (alpdr)

Messages

Note	From
Please double check this article before we publish it on Oct 7th 2024.	iimj2019
if there are revisions please reply via this message before Oct 6th 2024	2024-10-04 06:16 AM
Hotimah Masdan Salim, dr., Ph.D	
<a href="#">International Islamic Medical Journal</a>	
<a href="#">8 Double infection by MultiDrug Resistant Escherichia coli bacteria A case report.pdf</a>	
▶ Thank you for sending a message to double check the article. The article is in accordance with the last corrected revision. Thank you and sorry for the delay in replying to messages.	alpdr
	2024-10-07 06:41 AM

Age Group	Number of Respondents
18-24	0
25-34	0
35-44	13
45-54	11
55-64	12
65-74	1
75+	0



## Double infection by Multi-Drug Resistant *Escherichia coli* bacteria: A case report

Ayu Lidya Paramita<sup>1</sup>, Yelvi Ilevani<sup>1,2</sup>

<sup>1</sup> Department of Medical Microbiology, Faculty of Medicine Universitas Muhammadiyah Surabaya, Jl. Raya Sutorejo No 59 Surabaya, Indonesia

<sup>2</sup> Study Program of Clinical Microbiology Specialist, Faculty of Medicine Universitas Airlangga – Dr. Soetomo General Academic Hospital, Jl. Prof Dr Moestopo 47, Surabaya, Indonesia

\*Corresponding Author: [ayu.lp@um-surabaya.ac.id](mailto:ayu.lp@um-surabaya.ac.id)

DOI: 10.33086/iimj.v6i1.6286

### ARTICLE INFO

**Keywords:**  
Infection,  
*Escherichia coli*,  
MDRO

Submitted: July  
25<sup>th</sup> 2024

Reviewed: Aug  
16<sup>th</sup> 2024

Accepted: Sept  
17<sup>th</sup> 2024

### ABSTRACT

**Introduction:** Antimicrobial resistance (AMR) is a global issue causing multidrug-resistant bacterial infections, leading to higher morbidity and mortality rates. *Escherichia coli*, a Gram-negative Enterobacteriales bacteria, is the predominant cause of common diseases. In 2018, *Escherichia coli* ESBL (beta-lactamase enzyme Extended-spectrum) bacterium had the highest antibiotic resistance in Surabaya, Indonesia. In 2022, 3rd generation cephalosporin-resistant *E. coli* and carbapenem-resistant *E. coli* were the top priority pathogens in Indonesia.

**Case:** A one-year-old girl was taken to the emergency room after vomiting seven times and vomiting. She had a fever for one week, and her nose was runny. The patient had kidney channels narrowed and had surgery to implant a DJ stent in her right kidney five months prior. Physical examination revealed anemia, jaundice, cyanosis, and dyspnea. Blood and urine cultures were conducted, and *Escherichia coli* bacteria were found in urine and blood samples. *Escherichia coli* ESBL was found to be sensitive to several drugs, while its blood showed it was carbapenem-resistant, only sensitive to Ceftazidime, Amikacin, Gentamicin, Tigecycline, and Cefoperazone Sulbactam.

**Discussion:** Pediatric patients often experience urinary infections from *Escherichia coli* (ESBL) and bloodstream infections from *Escherichia coli* (CRE). These bacteria colonize various sites in the human body, including the urinary tract, causing diarrhea and causing cystitis. ESBL, or Extended Spectrum b-lactamase, breaks down antibiotics, making them ineffective for treating infections. ESBL production is associated with a bacterium found in the bowel, and resistance genes are often transmitted through plasmids carrying other resistance genes. The emergence of carbapenem-resistant *Escherichia coli* isolates (CREC) has led to using polymyxin, tigecycline, fosfomycin, and aminoglycosides as effective antibiotics against CREC. CREC can lead to severe infections, including intra-abdominal infections, pneumonia, urinary tract infections, and device-associated infections.

#### Conclusions:

*Escherichia coli*, an MDRO bacteria, requires antibiotic sensitivity test results for effective treatment, with sensitive drugs often chosen in difficult cases, and requiring source control.

### Introduction

The global issue of Antimicrobial resistance (AMR) is significant. (Huang et al., 2024; Leoni et al., 2023). Multi-drug-

resistant bacterial infections are linked to higher morbidity and mortality rates in real-world environments (Kasanga et al., 2023; Saliba et al., 2023). With the usage

of antimicrobial medications, AMR rises (Huang et al., 2024). Antibiotic resistance leads to fewer treatment options available, longer hospital stays, higher treatment costs, and higher death rates. The need for alternate treatment options is urgent due to the rise in antibiotic resistance and the ineffectiveness of antibiotic therapies (Nasrollahian et al., 2024). Multidrug-resistant organism (MDRO) infections are more common among elderly people confined to long-term care institutions (Rodríguez-Villodres et al., 2021).

Each continent has a different prevalence of MDROs in long-term care facilities (LTCF). Asia has the highest prevalence of extended-spectrum  $\beta$ -lactamase (ESBL) Enterobacterales (71.6%), carbapenem-resistant (CRE) Enterobacterales (6.9%), and methicillin-resistant *Staphylococcus aureus* (MRSA) (25.6%) (Rodríguez-Villodres et al., 2021).

*Escherichia coli* belongs to the family Enterobacteriaceae and order Enterobacterales. Gram-negative Enterobacterales bacteria *Escherichia coli* is a facultative anaerobe that is not sporogenous (Nasrollahian et al., 2024; Vázquez-López et al., 2023). *Escherichia coli* is the predominant cause of several common bacterial diseases, such as gastroenteritis, urinary tract infections (UTIs), bloodstream infections (BSIs), septicemia, and newborn meningitis, even

though it is a frequent member of the gut microbiota in both people and animals. It is also present in water, soil, and the vicinity of plants. Apart from the rising incidence of *Escherichia coli* infections, a significant problem is their ongoing drug resistance (Sora et al., 2021).

*Escherichia coli* can manufacture the beta-lactamase enzyme Extended-spectrum (ESBL) and is carbapenem-resistant. Broad-spectrum cephalosporins, monobactams, and penicillins can all be hydrolyzed by bacteria that produce enzyme-specific beta-lactamases (ESBLs). On the other hand, an isolate of *Escherichia coli* that is carbapenem-resistant is resistant to imipenem, meropenem, ertapenem, or any other carbapenem-containing antibiotic (Endraswari et al., 2022). Within six months, *Escherichia coli* was the third rank of Gram-negative bacteria responsible for a bloodstream infection at Dr. Soetomo Hospital in Surabaya in 2018. Regarding the most dangerous UTIs, *Escherichia coli* ESBL bacterium had the highest level of antibiotic resistance (Ariana et al., 2020; Endraswari et al., 2022). Distribution of WHO priority pathogens based on specimens in all hospitals in 2022 in Indonesia, 3rd generation cephalosporin-resistant *E. coli*, and carbapenem-resistant *E. coli* are in first and third place compared to other MDRO bacteria (PAMKI, 2023).



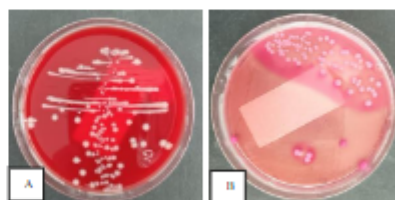
### Case

The patient's mother took a one-year-old girl to the Emergency room. Since this morning, the patient has puked seven times and made quite a bit of vomit. She appeared thirsty and was still drinking. There was a fever for one week, reaching a temperature of 39.5°C. The temperature drops with paracetamol and then increases again. She hasn't had diarrhea or shortness of breath in the last four days but has been coughing up phlegm. Her nose is runny. Past medical background: The patient, who was eight months old, had both of his kidney channels narrowed. Five months prior, she had surgery to implant a DJ stent in his right kidney. Additionally, the catheter was withdrawn from the patient two months ago.

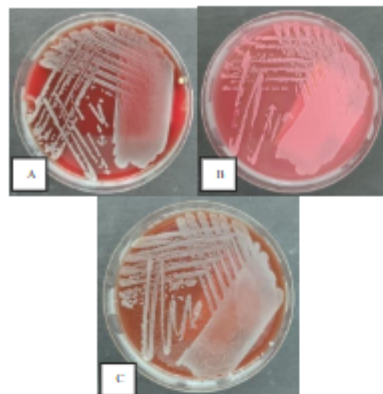
On physical examination, the Glasgow coma scale (GCS) was found to be 4/5, heart rate 140 times per minute, pulse strong, body temperature 36.6, SpO<sub>2</sub> 97% fa, respiratory rate 26 times per minute. Head and neck: Anemia (-), Jaundice (-), cyanosis (-), Dyspnea (-), droopy eyes, dry lips, abdomen: supple, flat, not distended, normal bowel sounds, extremities: pale warm acral, CRT < 2 seconds. Blood laboratory examination: Hb: 8.5, WBC: 21.92x10<sup>3</sup>, PCT: 5.82, Neut: 71.2%, BUN: 12.5, SK 0.4. Urinalysis: Clear yellow, Specific gravity 1.003, Ph 5.5, glucose -, ketones -,

Leukocytes 3+, Nitrites +, erythrocytes 2+, Protein 1+, bilirubin -, urobilinogen -, albumin 150, erythrocytes 1.16/hpf, leukocytes 57.15/hpf, non-squamous epithelium 14.21 per visual field, crystals -, bacteria 1982 per visual field.

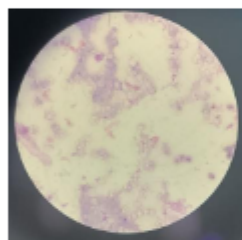
Then, urine and blood cultures are carried out. From the results of culture in the media on urine samples, direct Gram staining was obtained: PMN -, Epithelium -, Bacteria -. Blood Agar Plate: Round, small, white colonies, non-hemolyzed, > 10<sup>5</sup>. McConkey Agar Plate: Pink colonies, lactose fermenter. The blood specimen showed a Gram Bactec result: Gram-Negative Rods. Blood Agar Plate: Round, small, white colonies, non-hemolyzed. Chocolate agar plate: Colonies are round, small, white, non-hemolyzed—McConkey Agar Plate: Pink colonies, lactose fermenters.



**Figure 1.** Colony growth in (A) Blood Agar, (B). McConkey Agar after incubation 1x24 hours, at temperature 37°C



**Figure 2.** Colony growth in (A) Blood Agar, (B) McConkey Agar, (C) Chocolate Agar after incubation 1x24 hours, at temperature 37°C



**Figure 3.** Direct gram stain from bacteria, Time to Positivity 1x24 hours, gram-negative rods in high power field

**Table 1.** Results of bacterial identification and antibiotic sensitivity testing

Specimens	Urine	Blood
Bacteria	<i>Escherichia coli ESBL</i>	<i>Escherichia coli CRE</i>
Antibiotic Sensitivity Test	Sensitive = Amikacin, Ceftazidime, Gentamicin, Imipenem, Meropenem, Tigecycline, Cefoperazone Sulbactam, Fosfomycin	Sensitive = Ceftazidime, Amikacin, Gentamicin, Tigecycline, Cefoperazone Sulbactam

*Escherichia coli* bacteria were found in urine and blood specimens with different bacterial sensitivity test results. In the urine specimen (*Escherichia coli ESBL*), some drugs were still sensitive, namely Amikacin, Ceftazidim, Gentamicin, Imipenem, Meropenem, Tigecycline, Cefoperazone Sulbactam, and Fosfomycin. Meanwhile, the blood specimen results showed that *Escherichia coli* was carbapenem-resistant, which was only sensitive to the drugs Ceftazidim, Amikacin, Gentamicin, Tigecycline, and Cefoperazone Sulbactam.

On the 3rd day of hospitalization, urine and blood cultures came out, and the patient was given the antibiotic Cefoperazone Sulbactam.

## Discussion

From the results above, it was found that these pediatric patients experienced infections in two different places. *Escherichia coli ESBL* in patients is called a urinary infection, and *Escherichia coli CRE* obtained in the blood is called a bloodstream infection. The urinary tract is the most often colonized extra-intestinal location by these bacteria, and these bacteria frequently cause bloodstream infections. The site of infection (e.g., uropathogenic *Escherichia coli*, named for their impact on the urinary system, and

also extraintestinal pathogenic *Escherichia coli*, or ExPEC) are among the characteristics used to classify pathogenic *Escherichia coli* into "pathotypes" or "pathovars." (Foster-Nyarko & Pallen, 2022; Zhou et al., 2023)

In Gram-negative bacteria,  $\beta$ -lactamase enzymes that hydrolyze the amide bond of the four-membered  $\beta$ -lactam ring are the primary resistance mechanism, with multiple enzymes disseminating on mobile genetic elements across opportunistic pathogens such as Enterobacteriaceae (e.g., *Escherichia coli*) (Tooke et al., 2019). ESBL stands for Extended Spectrum  $\beta$ -Lactamase.  $\beta$ -lactamase enzymes break down and destroy some commonly used antibiotics, including penicillin and cephalosporins, and make these drugs ineffective for treating infections. ESBL production is associated with a bacterium usually found in the bowel. Particularly in Enterobacteriaceae, genes that produce ESBL and carbapenemase frequently have a high transmission rate through plasmids that carry other resistance genes. Both resistances in the same strain are often on different plasmids since ESBL and carbapenemases are connected with various plasmids. This has a significant impact on the use of antibiotics, the price of treatment, patient outcomes, and the range of available treatments. *Escherichia*

*coli* were treated by cephalosporin and carbapenem; nevertheless, following the emergence of carbapenem-resistant *Escherichia coli* isolates (CREC) and the global spread of these variants, polymyxin, tigecycline, fosfomycin, and aminoglycosides, either alone or in conjunction with other antibiotics, are the antibiotics that continue to be efficacious against CREC. CREC can lead to severe infections, including intra-abdominal infections, pneumonia, urinary tract infections, and device-associated infections (Huang et al., 2024; Nasrollahian et al., 2024). Various mechanisms of resistance are exhibited by *Escherichia coli* strains, including the production of different  $\beta$ -lactamase enzymes, lowered permeability of the membrane, formation of capsule and biofilm, employment of efflux pumps, and enzymatic modification (Nasrollahian et al., 2024). Through the release of antimicrobial compounds, food competition, maintenance of the integrity of the epithelial barrier, bacteriophage deployment, and immunological stimulation, the gut microbiota can offer resistance against colonization. Nevertheless, nothing is now known about the connection between MDRO colonization and the microbiome (Ducarmon et al., 2021)

## Conclusion

*Escherichia coli* is an Enterobacteriaceae which is often listed as MDRO bacteria. Reporting of antibiotic sensitivity test results will be highly anticipated when treating patients. Treatment will choose culture results with still-sensitive drugs in difficult cases with *Escherichia coli* bacterial infections with different genotypes. However, source control management is still important to do while waiting for the drug to be administered.

## References

- Ariana, N., Pestariati, P., Sasongkowati, R., & Kusumaningrum, D. (2020). RESISTANCE PATTERN OF *Escherichia Coli* AGAINST ANTIBIOTICS IN URINARY TRACT INFECTION PATIENTS IN RSUD DR. SOETOMO SURABAYA. *Journal of Community Medicine and Public Health Research*, 1(2), 53. <https://doi.org/10.20473/jcmphr.v1i2.21693>
- Ducarmon, Q. R., Terveer, E. M., Nooij, S., Bloem, M. N., Vendrik, K. E. W., Caljouw, M. A. A., Sanders, I. M. J. G., van Dorp, S. M., Wong, M. C., Zwitterink, R. D., & Kuijper, E. J. (2021). Microbiota-associated risk factors for asymptomatic gut colonisation with multi-drug-resistant organisms in a Dutch nursing home. *Genome Medicine*, 13(1), 1–17. <https://doi.org/10.1186/s13073-021-00869-z>
- Endraswari, P. D., Setiawan, F., Paramita, A. L., & Mertaniasih, N. M. (2022). Epidemiology of *Escherichia coli* as a Critical Pathogen of Bloodstream Infection Patients in Dr . Soetomo General Hospital , Surabaya , Indonesia. *Indonesian Journal of Tropical and Infectious Disease*, 10(3).
- Foster-Nyarko, E., & Pallen, M. J. (2022). The microbial ecology of *Escherichia coli* in the vertebrate gut. *FEMS Microbiology Reviews*, 46(3), 1–22. <https://doi.org/10.1093/femsre/fuac008>
- Huang, J., Lv, C., Li, M., Rahman, T., Chang, Y. F., Guo, X., Song, Z., Zhao, Y., Li, Q., Ni, P., & Zhu, Y. (2024). Carbapenem-resistant *Escherichia coli* exhibit diverse spatiotemporal epidemiological characteristics across the globe. *Communications Biology*, 7(1), 1–13. <https://doi.org/10.1038/s42003-023-05745-7>
- Kasanga, M., Kwenda, G., Wu, J., Kasanga, M., Mwikisa, M. J., Chanda, R., Mupila, Z., Yankonde, B.,

- Sikazwe, M., Mwila, E., Shempela, D. M., Solochi, B. B., Phiri, C., Mudenda, S., & Chanda, D. (2023). Antimicrobial Resistance Patterns and Risk Factors Associated with ESBL-Producing and MDR *Escherichia coli* in Hospital and Environmental Settings in Lusaka, Zambia: Implications for One Health, Antimicrobial Stewardship and Surveillance Systems. *Microorganisms*, 11(8), 1–21. <https://doi.org/10.3390/microorganisms11081951>
- Leoni, F., Sacchini, L., Pieralisi, S., Angelico, G., Magistrali, C. F., Cucco, L., Massacci, F. R., Albini, E., Duranti, A., Cammà, C., Secondini, B., Rinaldi, A., & Barchiesi, F. (2023). Occurrence and temporal distribution of extended-spectrum  $\beta$ -lactamase-producing *Escherichia coli* in clams from the Central Adriatic, Italy. *Frontiers in Microbiology*, 14(November), 1–13. <https://doi.org/10.3389/fmicb.2023.1219008>
- Nasrollahian, S., Graham, J. P., & Halaji, M. (2024). A review of the mechanisms that confer antibiotic resistance in pathotypes of *E. coli*. *Frontiers in Cellular and Infection Microbiology*, 14(April), 1–28. <https://doi.org/10.3389/fcimb.2024.1387497>
- PAMKI. (2023). *Pola Patogen dan Antibiotogram di Indonesia Tahun 2022*. 1–103.
- Rodríguez-Villodres, Á., Martín-Gandul, C., Peñalva, G., Guisado-Gil, A. B., Crespo-Rivas, J. C., Pachón-Ibáñez, M. E., Lepe, J. A., & Cisneros, J. M. (2021). Prevalence and risk factors for multidrug-resistant organisms colonization in long-term care facilities around the world: A review. *Antibiotics*, 10(6). <https://doi.org/10.3390/antibiotics10060680>
- Saliba, R., Zahar, J. R., Dabar, G., Riachy, M., Karam-Sarkis, D., & Husni, R. (2023). Limiting the Spread of Multidrug-Resistant Bacteria in Low-to-Middle-Income Countries: One Size Does Not Fit All. *Pathogens*, 12(1). <https://doi.org/10.3390/pathogens12010144>
- Sora, V. M., Meroni, G., Martino, P. A., Soggiu, A., Bonizzi, L., & Zecconi, A. (2021). Extraintestinal pathogenic *Escherichia coli*: Virulence factors and antibiotic resistance. *Pathogens*, 10(11). <https://doi.org/10.3390/pathogens10111355>
- Tooke, C. L., Hinchliffe, P., Bragginton, E. C., Colenso, C. K., Hirvonen, V. H.



- A., Takebayashi, Y., & Spencer, J. (2019).  $\beta$ -Lactamases and  $\beta$ -Lactamase Inhibitors in the 21st Century. *Journal of Molecular Biology*, 431(18), 3472–3500. <https://doi.org/10.1016/j.jmb.2019.04.002>
- Vázquez-López, R., Hernández-Martínez, T., Larios-Fernández, S. I., Piña-Leyva, C., Lara-Lozano, M., Guerrero-González, T., Martínez-Bautista, J., Gómez-Conde, E., & González-Barrios, J. A. (2023). Characterization of Beta-Lactam Resistome of *Escherichia coli* Causing Nosocomial Infections. *Antibiotics*, 12(9), 1–22. <https://doi.org/10.3390/antibiotics12091355>
- Zhou, Y., Zhou, Z., Zheng, L., Gong, Z., Li, Y., Jin, Y., Huang, Y., & Chi, M. (2023). Urinary Tract Infections Caused by Uropathogenic *Escherichia coli*: Mechanisms of Infection and Treatment Options. *International Journal of Molecular Sciences*, 24(13). <https://doi.org/10.3390/ijms24131053>